

VCAM1 Rabbit pAb
Catalog # AP53533**Specification****VCAM1 Rabbit pAb - Product Information**

Application	WB
Primary Accession	P19320
Reactivity	Rat
Host	Rabbit
Clonality	Polyclonal Antibody
Calculated MW	81276

VCAM1 Rabbit pAb - Additional Information**Gene ID** 7412**Other Names**

Vascular cell adhesion protein 1, V-CAM 1, VCAM-1, INCAM-100, CD106, VCAM1

Dilution

WB~~1:1000

VCAM1 Rabbit pAb - Protein Information**Name** VCAM1**Function**

Cell adhesion glycoprotein predominantly expressed on the surface of endothelial cells that plays an important role in immune surveillance and inflammation (PubMed:31310649). Acts as a major regulator of leukocyte adhesion to the endothelium through interaction with different types of integrins (PubMed:10209034). During inflammatory responses, binds ligands on the surface of activated endothelial cells to initiate the activation of calcium channels and the plasma membrane-associated small GTPase RAC1 leading to leukocyte transendothelial migration (PubMed:22970700). Serves also as a quality- control checkpoint for entry into bone marrow by providing a 'don't-eat-me' stamping in the context of major histocompatibility complex (MHC) class-I presentation (PubMed:35210567).

Cellular Location

[Vascular cell adhesion protein 1]: Cell membrane; Single-pass type I membrane protein

Tissue Location

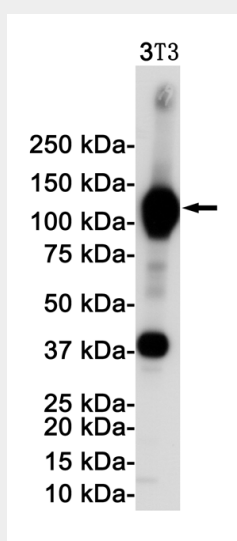
Expressed on inflamed vascular endothelium, as well as on macrophage-like and dendritic cell types in both normal and inflamed tissue

VCAM1 Rabbit pAb - Protocols

Provided below are standard protocols that you may find useful for product applications.

- [Western Blot](#)
- [Blocking Peptides](#)
- [Dot Blot](#)
- [Immunohistochemistry](#)
- [Immunofluorescence](#)
- [Immunoprecipitation](#)
- [Flow Cytometry](#)
- [Cell Culture](#)

VCAM1 Rabbit pAb - Images



Western blot detection of VCAM1 in 3T3 cell lysates using VCAM1 Rabbit pAb(1:1000 diluted). Predicted band size:81KDa.Observed band size:110KDa.

VCAM1 Rabbit pAb - Background

Swiss-Prot Acc.P19320.Important in cell-cell recognition. Appears to function in leukocyte-endothelial cell adhesion. Interacts with integrin alpha-4/beta-1 (ITGA4/ITGB1) on leukocytes, and mediates both adhesion and signal transduction. The VCAM1/ITGA4/ITGB1 interaction may play a pathophysiologic role both in immune responses and in leukocyte emigration to sites of inflammation.