

**ATP6V1E1 Rabbit pAb**  
Catalog # AP53527**Specification****ATP6V1E1 Rabbit pAb - Product Information**

Application	<b>WB</b>
Primary Accession	<a href="#">P36543</a>
Reactivity	<b>Rat</b>
Host	<b>Rabbit</b>
Clonality	<b>Polyclonal Antibody</b>
Calculated MW	<b>26145</b>

**ATP6V1E1 Rabbit pAb - Additional Information****Gene ID** 529**Other Names**

V-type proton ATPase subunit E 1, V-ATPase subunit E 1, V-ATPase 31 kDa subunit, p31, Vacuolar proton pump subunit E 1, ATP6V1E1, ATP6E, ATP6E2

**Dilution**

WB~~1:1000

**ATP6V1E1 Rabbit pAb - Protein Information****Name** ATP6V1E1**Synonyms** ATP6E, ATP6E2**Function**

Subunit of the V1 complex of vacuolar(H<sup>+</sup>)-ATPase (V-ATPase), a multisubunit enzyme composed of a peripheral complex (V1) that hydrolyzes ATP and a membrane integral complex (V0) that translocates protons (PubMed:<a href="http://www.uniprot.org/citations/32001091" target="\_blank">32001091</a>, PubMed:<a href="http://www.uniprot.org/citations/33065002" target="\_blank">33065002</a>). V-ATPase is responsible for acidifying and maintaining the pH of intracellular compartments and in some cell types, is targeted to the plasma membrane, where it is responsible for acidifying the extracellular environment (PubMed:<a href="http://www.uniprot.org/citations/32001091" target="\_blank">32001091</a>).

**Cellular Location**

Apical cell membrane; Peripheral membrane protein. Cytoplasmic vesicle, secretory vesicle, synaptic vesicle membrane {ECO:0000250|UniProtKB:Q6PCU2}; Peripheral membrane protein. Cytoplasmic vesicle, clathrin-coated vesicle membrane {ECO:0000250|UniProtKB:Q6PCU2}; Peripheral membrane protein

**Tissue Location**

Kidney; localizes to early distal nephron, encompassing thick ascending limbs and distal convoluted tubules (at protein level) (PubMed:29993276). Ubiquitous (PubMed:12036578). High

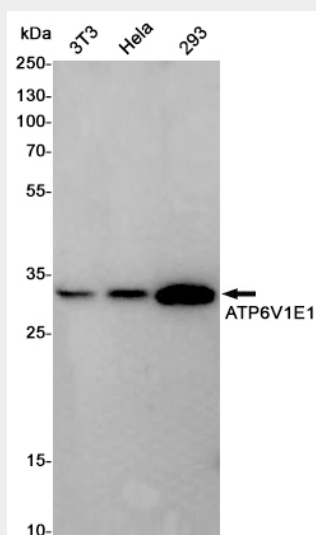
expression in the skin (PubMed:28065471).

### ATP6V1E1 Rabbit pAb - Protocols

Provided below are standard protocols that you may find useful for product applications.

- [Western Blot](#)
- [Blocking Peptides](#)
- [Dot Blot](#)
- [Immunohistochemistry](#)
- [Immunofluorescence](#)
- [Immunoprecipitation](#)
- [Flow Cytometry](#)
- [Cell Culture](#)

### ATP6V1E1 Rabbit pAb - Images



Western blot detection of ATP6V1E1 in 3T3, HeLa, 293 cell lysates using ATP6V1E1 Rabbit pAb (1:1000 diluted). Predicted band size: 26 kDa. Observed band size: 26 kDa.

### ATP6V1E1 Rabbit pAb - Background

Swiss-Prot Acc. P36543.