

**Anti-S100A6 Antibody**  
**Mouse Monoclonal Antibody**  
**Catalog # AP53481****Specification**

---

**Anti-S100A6 Antibody - Product Information**

Application	<b>WB</b>
Primary Accession	<a href="#">P06703</a>
Other Accession	<a href="#">NM_014624</a>
Reactivity	<b>Human</b>
Host	<b>Mouse</b>
Clonality	<b>Monoclonal</b>
Isotype	<b>IgG1</b>
Immunogen	<b>Purified recombinant human S100A6 protein expressed in E.coli.</b>
Purification	<b>Affinity purified</b>
Calculated MW	<b>10KDa KDa</b>

**Anti-S100A6 Antibody - Additional Information****Gene ID** 6277**Other Names**

2A9;5B10;CABP;CACY;Calcyclin;Growth factor inducible protein 2A9;Growth factor-inducible protein 2A9;MLN 4;MLN4;OTTHUMP00000015472;OTTHUMP00000015473;PRA;PRAGrowth factor inducible protein 2A9;Prolactin receptor associated protein;Prolactin receptor-associated protein;Protein S100 A6;Protein S100-A6;S100 A6;S100 calcium binding protein A6 (calcyclin);S100 calcium binding protein A6;S100 calcium-binding protein A6;S100A6;S10A6\_HUMAN.

**Dilution**

WB~~1:1000

**Format**

Purified mouse monoclonal antibody in PBS(pH 7.4) containing with 0.09% (W/V) sodium azide and 50% glycerol.

**Storage**

Store at -20 °C.Stable for 12 months from date of receipt

**Anti-S100A6 Antibody - Protein Information****Name** S100A6**Synonyms** CACY**Function**

May function as calcium sensor and modulator, contributing to cellular calcium signaling. May function by interacting with other proteins, such as TPR-containing proteins, and indirectly play a

role in many physiological processes such as the reorganization of the actin cytoskeleton and in cell motility. Binds 2 calcium ions. Calcium binding is cooperative.

#### Cellular Location

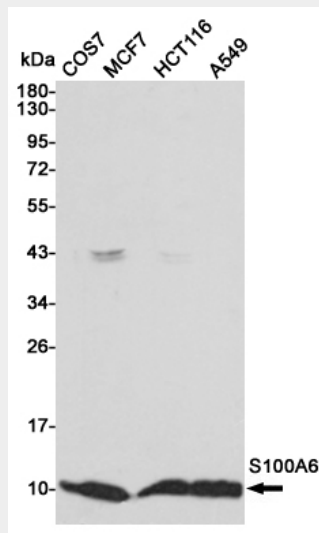
Nucleus envelope. Cytoplasm. Cell membrane; Peripheral membrane protein; Cytoplasmic side

#### Anti-S100A6 Antibody - Protocols

Provided below are standard protocols that you may find useful for product applications.

- [Western Blot](#)
- [Blocking Peptides](#)
- [Dot Blot](#)
- [Immunohistochemistry](#)
- [Immunofluorescence](#)
- [Immunoprecipitation](#)
- [Flow Cytometry](#)
- [Cell Culture](#)

#### Anti-S100A6 Antibody - Images



Western blot detection of S100A6 in COS7, MCF7, HCT116 and A549 cell lysates using S100A6 mouse mAb (1:1000 diluted). Predicted band size: 10 kDa. Observed band size: 10 kDa.

#### Anti-S100A6 Antibody - Background

May function as calcium sensor and modulator, contributing to cellular calcium signaling. May function by interacting with other proteins, such as TPR-containing proteins, and indirectly play a role in many physiological processes such as the reorganizati