

Anti-TAB1 Antibody
Mouse Monoclonal Antibody
Catalog # AP53465**Specification**

Anti-TAB1 Antibody - Product Information

Application	WB
Primary Accession	Q15750
Other Accession	NM_006116
Reactivity	Human
Host	Mouse
Clonality	Monoclonal
Isotype	IgG2b
Immunogen	Purified recombinant human TAB1 protein expressed in E.coli.
Purification	Affinity purified
Calculated MW	60kDa kDa

Anti-TAB1 Antibody - Additional Information**Gene ID** 10454**Other Names**

2310012M03Rik;3'-Tab1;MAP3K7IP1;MAP3K7IP1;MGC57664;Mitogenactivatedproteinkinasekinasekinase7interactingprotein1;Mitogen-activatedproteinkinasekinasekinase7-interactingprotein1;TAB1;TAB1;TAB1_HUMAN;TAK1bindingprotein1;TAK1-bindingprotein1;TGFbetaactivatedkinase1bindingprotein1;TGF-betaactivatedkinase1/MAP3K7bindingprotein1;TGF-beta-activatedkinase1andMAP3K7-bindingprotein1;TGF-beta-activatedkinase1-bindingprotein1;Transforminggrowthfactorbetaactivatedkinasebindingprotein1.

Dilution

WB~~1:1000

Format

Purified mouse monoclonal antibody in PBS(pH 7.4) containing with 0.09% (W/V) sodium azide and 50% glycerol.

Storage

Store at -20 °C.Stable for 12 months from date of receipt

Anti-TAB1 Antibody - Protein Information**Name** TAB1**Synonyms** MAP3K7IP1**Function**

Key adapter protein that plays an essential role in JNK and NF-kappa-B activation and

proinflammatory cytokines production in response to stimulation with TLRs and cytokines (PubMed:22307082, PubMed:24403530). Mechanistically, associates with the catalytic domain of MAP3K7/TAK1 to trigger MAP3K7/TAK1 autophosphorylation leading to its full activation (PubMed:10838074, PubMed:25260751, PubMed:37832545). Similarly, associates with MAPK14 and triggers its autophosphorylation and subsequent activation (PubMed:11847341, PubMed:29229647). In turn, MAPK14 phosphorylates TAB1 and inhibits MAP3K7/TAK1 activation in a feedback control mechanism (PubMed:14592977). Plays also a role in recruiting MAPK14 to the TAK1 complex for the phosphorylation of the TAB2 and TAB3 regulatory subunits (PubMed:18021073).

Cellular Location

Cytoplasm, cytosol. Endoplasmic reticulum membrane; Peripheral membrane protein; Cytoplasmic side. Note=Recruited to the endoplasmic reticulum following interaction with STING1

Tissue Location

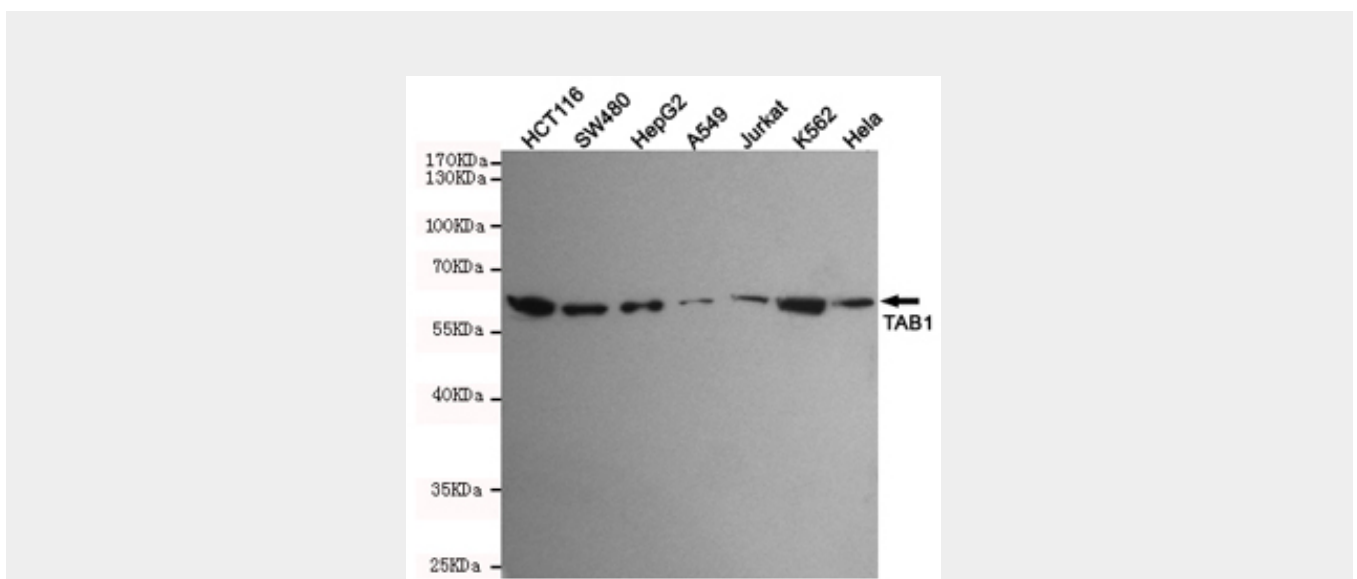
Ubiquitous..

Anti-TAB1 Antibody - Protocols

Provided below are standard protocols that you may find useful for product applications.

- [Western Blot](#)
- [Blocking Peptides](#)
- [Dot Blot](#)
- [Immunohistochemistry](#)
- [Immunofluorescence](#)
- [Immunoprecipitation](#)
- [Flow Cytometry](#)
- [Cell Culture](#)

Anti-TAB1 Antibody - Images



Western blot detection of TAB1 in HCT116,SW480,HepG2,A549,Jurkat,K562 and Hela cell lysates using TAB1 mouse mAb (1:1000 diluted).Predicted band size:60KDa.Observed band size:60KDa.

Anti-TAB1 Antibody - Background

May be an important signaling intermediate between TGFB receptors and MAP3K7/TAK1. May play an important role in mammalian embryogenesis.