

Anti-Lamin B2 Antibody
Mouse Monoclonal Antibody
Catalog # AP53452**Specification**

Anti-Lamin B2 Antibody - Product Information

Application	IP, WB
Primary Accession	O03252
Other Accession	NM_032737
Reactivity	Human, Mouse
Host	Mouse
Clonality	Monoclonal
Isotype	IgG1
Immunogen	Recombinant human Lamin B2 protein.
Calculated MW	68 KDa

Anti-Lamin B2 Antibody - Additional Information**Gene ID** 84823**Other Names**

LAMB 2; LAMB2; Lamin-B2; LMN 2; LMN B2; LMN2; LMNB 2; LMNB2; LMNB2_HUMAN; MGC2721; RGD1563803.

Dilution

WB~~1:500

Format

Ascites containing with 0.09% (W/V) sodium azide and 50% glycerol.

Storage

Store at -20 °C. Stable for 12 months from date of receipt

Anti-Lamin B2 Antibody - Protein Information**Name** LMNB2**Synonyms** LMN2**Function**

Lamins are intermediate filament proteins that assemble into a filamentous meshwork, and which constitute the major components of the nuclear lamina, a fibrous layer on the nucleoplasmic side of the inner nuclear membrane (PubMed: [33033404](http://www.uniprot.org/citations/33033404)). Lamins provide a framework for the nuclear envelope, bridging the nuclear envelope and chromatin, thereby playing an important role in nuclear assembly, chromatin organization, nuclear membrane and telomere dynamics (PubMed: [33033404](http://www.uniprot.org/citations/33033404)). The structural integrity of the lamina is strictly controlled by the cell cycle, as seen by the

disintegration and formation of the nuclear envelope in prophase and telophase, respectively (PubMed:33033404).

Cellular Location

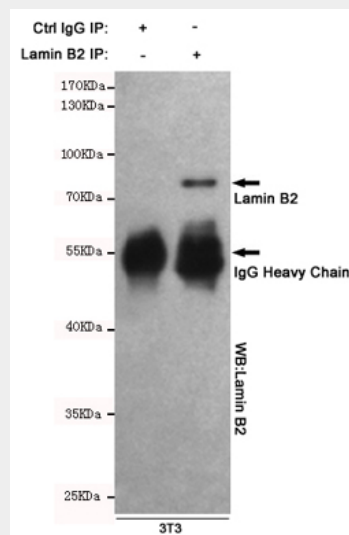
Nucleus lamina.

Anti-Lamin B2 Antibody - Protocols

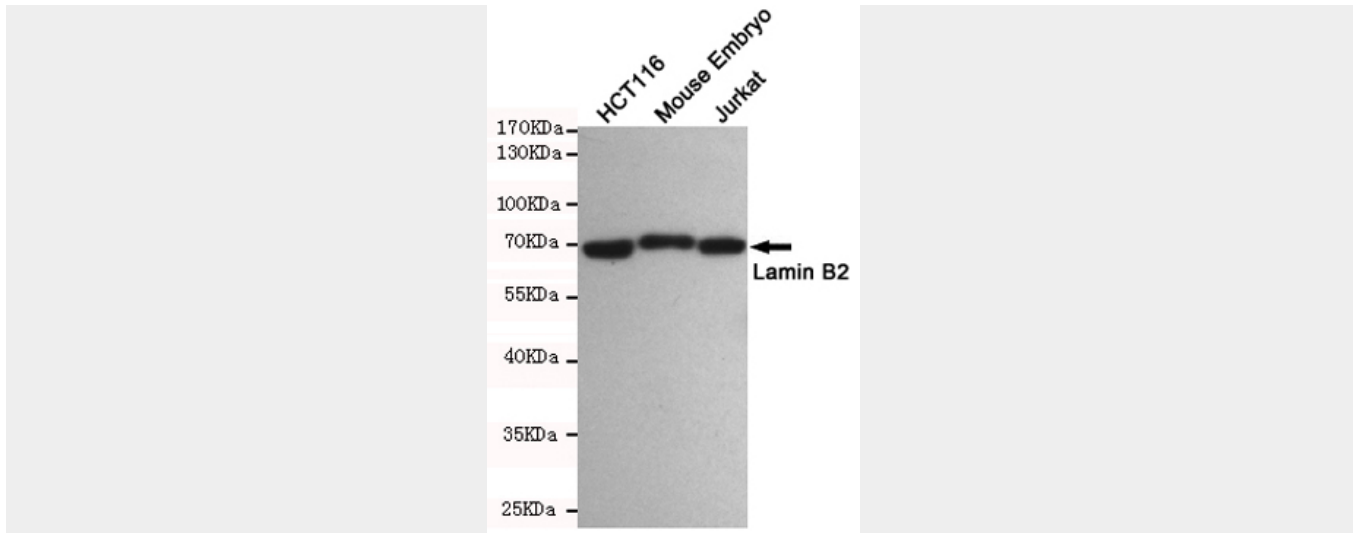
Provided below are standard protocols that you may find useful for product applications.

- [Western Blot](#)
- [Blocking Peptides](#)
- [Dot Blot](#)
- [Immunohistochemistry](#)
- [Immunofluorescence](#)
- [Immunoprecipitation](#)
- [Flow Cytometry](#)
- [Cell Culture](#)

Anti-Lamin B2 Antibody - Images



Immunoprecipitation analysis of 3T3 cell lysates using Lamin B2 mouse mAb.



Western blot detection of Lamin B2 in HCT116, Mouse Embryo and Jurkat cell lysates using Lamin B2 mouse mAb(dilution 1:500).Predicted band size:68kDa.Observed band size:68kDa.

Anti-Lamin B2 Antibody - Background

Lamins are components of the nuclear lamina, a fibrous layer on the nucleoplasmic side of the inner nuclear membrane, which is thought to provide a framework for the nuclear envelope and may also interact with chromatin.