

**Anti-Wnt3 Antibody**  
**Mouse Monoclonal Antibody**  
**Catalog # AP53437****Specification**

---

**Anti-Wnt3 Antibody - Product Information**

Application	<b>WB</b>
Primary Accession	<a href="#">P56703</a>
Other Accession	<a href="#">NM_030753</a>
Reactivity	<b>Transfected</b>
Host	<b>Mouse</b>
Clonality	<b>Monoclonal</b>
Isotype	<b>IgG1</b>
Immunogen	<b>Purified recombinant human Wnt3 protein fragments expressed in E.coli.</b>
Purification	<b>Affinity purified</b>
Calculated MW	<b>40 KDa</b>

**Anti-Wnt3 Antibody - Additional Information****Gene ID** 7473**Other Names**

Int 4;INT4;MGC131950;MGC138321;MGC138323;Proto-oncogene Int-4 homolog;Proto-oncogene Wnt-3;wingless type MMTV integration site family member 3;Wnt 3 proto oncogene protein;WNT 3 proto oncogene protein precursor;wnt3;WNT3\_HUMAN.

**Dilution**

WB~~1:1000

**Format**

PBS(pH 7.4) containing with 0.09% (W/V) sodium azide and 50% glycerol.

**Storage**

Store at -20 °C.Stable for 12 months from date of receipt

**Anti-Wnt3 Antibody - Protein Information****Name** WNT3**Synonyms** INT4**Function**

Ligand for members of the frizzled family of seven transmembrane receptors (Probable). Functions in the canonical Wnt signaling pathway that results in activation of transcription factors of the TCF/LEF family (PubMed:<a href="http://www.uniprot.org/citations/26902720" target="\_blank">26902720</a>). Required for normal gastrulation, formation of the primitive streak, and for the formation of the mesoderm during early embryogenesis. Required for normal

formation of the apical ectodermal ridge (By similarity). Required for normal embryonic development, and especially for limb development (PubMed:<a href="http://www.uniprot.org/citations/14872406" target="\_blank">14872406</a>).

#### Cellular Location

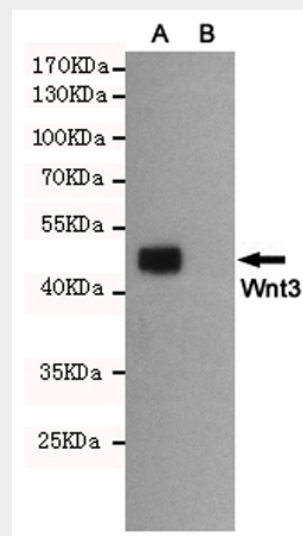
Secreted, extracellular space, extracellular matrix. Secreted

#### Anti-Wnt3 Antibody - Protocols

Provided below are standard protocols that you may find useful for product applications.

- [Western Blot](#)
- [Blocking Peptides](#)
- [Dot Blot](#)
- [Immunohistochemistry](#)
- [Immunofluorescence](#)
- [Immunoprecipitation](#)
- [Flow Cytometry](#)
- [Cell Culture](#)

#### Anti-Wnt3 Antibody - Images



Western blot detection of Wnt3 in CHO-K1 cell lysate (B) and CHO-K1 transfected by Wnt3 (A) cell lysate using Wnt3 mouse mAb (1:1000 diluted). Predicted band size: 40KDa. Observed band size: 45KDa.

#### Anti-Wnt3 Antibody - Background

Ligand for members of the frizzled family of seven transmembrane receptors. Wnt-3 and Wnt-3a play distinct roles in cell-cell signaling during morphogenesis of the developing neural tube.