

**Anti-Placental alkaline phosphatase (PLAP) Antibody**  
**Mouse Anti Human Monoclonal Antibody**  
**Catalog # AP53405**

**Specification**

---

**Anti-Placental alkaline phosphatase (PLAP) Antibody - Product Information**

Application	WB
Primary Accession	<a href="#">P05187</a>
Other Accession	<a href="#">NM_001632</a>
Reactivity	Human
Host	Mouse
Clonality	Monoclonal
Isotype	IgG1
Immunogen	Purified recombinant Placental alkaline phosphatase (PLAP) protein fragments expressed in E.coli.
Purification	Affinity purified
Calculated MW	70 KDa

**Anti-Placental alkaline phosphatase (PLAP) Antibody - Additional Information**

**Gene ID** 250

**Other Names**

Alkaline phosphatase; Alkaline phosphatase placental; Alkaline phosphatase placental type; Alkaline phosphatase Regan isozyme; ALP; Alp1; ALPP; FLJ61142; Germ-cell alkaline phosphatase; nagao isozyme; OTTHUMP00000164354; PALP; Placental alkaline phosphatase 1; placental heat-stable alkaline phosphatase; placental type; PLAP; PLAP-1; PLAP1; PPB1\_HUMAN.

**Dilution**

WB~~1:1000

**Format**

PBS(pH 7.4) containing with 0.09% (W/V) sodium azide and 50% glycerol.

**Storage**

Store at -20 °C.Stable for 12 months from date of receipt

**Anti-Placental alkaline phosphatase (PLAP) Antibody - Protein Information**

**Name** ALPP ([HGNC:439](#))

**Function**

Alkaline phosphatase that can hydrolyze various phosphate compounds.

**Cellular Location**

Cell membrane; Lipid-anchor, GPI-anchor

### Tissue Location

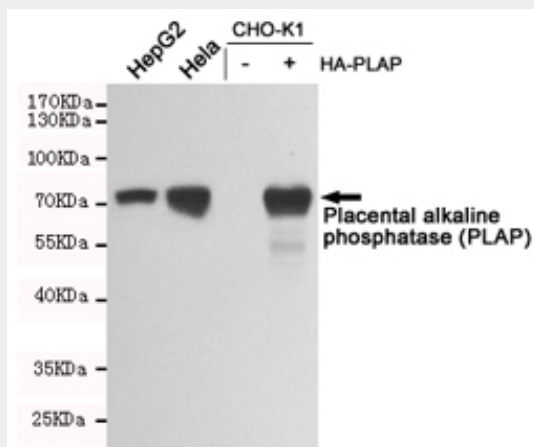
Detected in placenta (at protein level).

### Anti-Placental alkaline phosphatase (PLAP) Antibody - Protocols

Provided below are standard protocols that you may find useful for product applications.

- [Western Blot](#)
- [Blocking Peptides](#)
- [Dot Blot](#)
- [Immunohistochemistry](#)
- [Immunofluorescence](#)
- [Immunoprecipitation](#)
- [Flow Cytometry](#)
- [Cell Culture](#)

### Anti-Placental alkaline phosphatase (PLAP) Antibody - Images



Western blot analysis of extracts from HepG2, HeLa, CHO-K1 and CHO-K1 transfected pcDNA3.1-HA-PLAP cell lysates using Placental alkaline phosphatase (PLAP) mouse mAb (1:1000 diluted). Predicted band size: 70KDa. Observed band size: 70KDa.