

HER3 (pY1222) Antibody
Purified Rabbit Polyclonal Antibody (Pab)
Catalog # AP53346

Specification

HER3 (pY1222) Antibody - Product Information

| | |
|-------------------|------------------------|
| Application | WB |
| Primary Accession | P21860 |
| Reactivity | Human |
| Host | Rabbit |
| Clonality | Polyclonal |
| Calculated MW | 140 KDa |
| Antigen Region | 1187-1236 |

HER3 (pY1222) Antibody - Additional Information

Gene ID 2065

Dilution

WB~~1:1000

Format

Rabbit IgG in phosphate buffered saline , pH 7.4, 150mM NaCl, 0.09% (W/V) sodium azide and 50% glycerol

Storage

Store at -20 °C.Stable for 12 months from date of receipt

HER3 (pY1222) Antibody - Protein Information

Name ERBB3

Synonyms HER3

Function

Tyrosine-protein kinase that plays an essential role as cell surface receptor for neuregulins. Binds to neuregulin-1 (NRG1) and is activated by it; ligand-binding increases phosphorylation on tyrosine residues and promotes its association with the p85 subunit of phosphatidylinositol 3-kinase (PubMed:20682778). May also be activated by CSPG5 (PubMed:15358134). Involved in the regulation of myeloid cell differentiation (PubMed:27416908).

Cellular Location

[Isoform 1]: Cell membrane; Single-pass type I membrane protein

Tissue Location

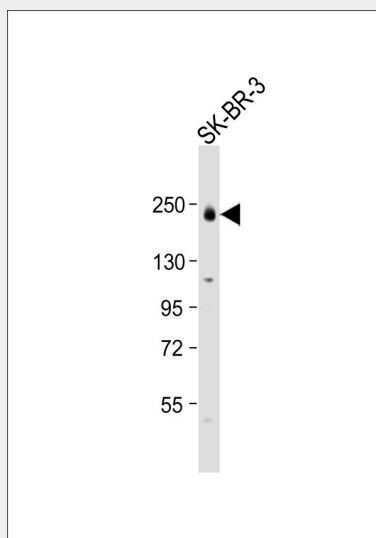
Epithelial tissues and brain.

HER3 (pY1222) Antibody - Protocols

Provided below are standard protocols that you may find useful for product applications.

- [Western Blot](#)
- [Blocking Peptides](#)
- [Dot Blot](#)
- [Immunohistochemistry](#)
- [Immunofluorescence](#)
- [Immunoprecipitation](#)
- [Flow Cytometry](#)
- [Cell Culture](#)

HER3 (pY1222) Antibody - Images



Anti-HER3 (pY1222) Antibody at 1:1000 dilution + SK-BR-3 whole cell lysate Lysates/proteins at 20 µg per lane. Secondary Goat Anti-Rabbit IgG, (H+L), Peroxidase conjugated at 1/10000 dilution. Predicted band size : 148 kDa Blocking/Dilution buffer: 5% NFDN/TBST.

HER3 (pY1222) Antibody - Background

Binds and is activated by neuregulins and NTAK. May also be activated by CSPG5.

HER3 (pY1222) Antibody - References

- Kraus M.H., et al. Proc. Natl. Acad. Sci. U.S.A. 86:9193-9197(1989).
Plowman G.D., et al. Proc. Natl. Acad. Sci. U.S.A. 87:4905-4909(1990).
Katoh M., et al. Biochem. Biophys. Res. Commun. 192:1189-1197(1993).
Kalnine N., et al. Submitted (MAY-2003) to the EMBL/GenBank/DDBJ databases.
Ota T., et al. Nat. Genet. 36:40-45(2004).