

PSA Antibody
Purified Rabbit Polyclonal Antibody (Pab)
Catalog # AP53304

Specification

PSA Antibody - Product Information

Application	WB
Primary Accession	P07288
Reactivity	Human, Mouse
Host	Rabbit
Clonality	Polyclonal
Calculated MW	29 KDa
Antigen Region	137-186

PSA Antibody - Additional Information

Gene ID 354

Other Names

Prostate-specific antigen, PSA, 3.4.21.77, Gamma-seminoprotein, Seminolisin, Kallikrein-3, P-30 antigen, Semenogelase, KLK3, APS

Dilution

WB~~ 1:1000

Format

Rabbit IgG in phosphate buffered saline , pH 7.4, 150mM NaCl, 0.09% (W/V) sodium azide and 50% glycerol

Storage

Store at -20 °C. Stable for 12 months from date of receipt

PSA Antibody - Protein Information

Name KLK3

Synonyms APS

Function

Hydrolyzes semenogelin-1 thus leading to the liquefaction of the seminal coagulum.

Cellular Location

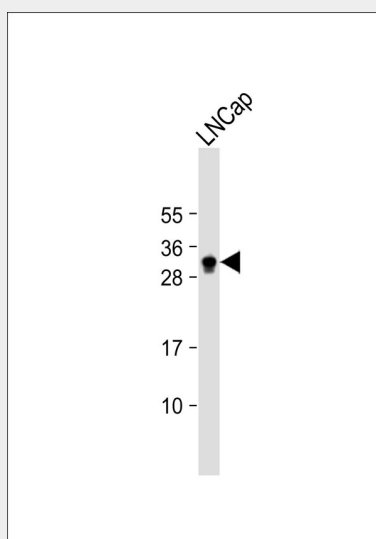
Secreted.

PSA Antibody - Protocols

Provided below are standard protocols that you may find useful for product applications.

- [Western Blot](#)
- [Blocking Peptides](#)
- [Dot Blot](#)
- [Immunohistochemistry](#)
- [Immunofluorescence](#)
- [Immunoprecipitation](#)
- [Flow Cytometry](#)
- [Cell Culture](#)

PSA Antibody - Images



Anti-PSA Antibody at 1:1000 dilution + LNCap whole cell lysate Lysates/proteins at 20 μ g per lane. Secondary Goat Anti-Rabbit IgG, (H+L), Peroxidase conjugated at 1/10000 dilution. Predicted band size : 29 kDa Blocking/Dilution buffer: 5% NFDM/TBST.

PSA Antibody - Background

Hydrolyzes semenogelin-1 thus leading to the liquefaction of the seminal coagulum.

PSA Antibody - References

- Lundwall A., et al. FEBS Lett. 214:317-322(1987).
Digby M.R., et al. Nucleic Acids Res. 17:2137-2137(1989).
Klobeck H.-G., et al. Nucleic Acids Res. 17:3981-3981(1989).
Lundwall A., et al. Biochem. Biophys. Res. Commun. 161:1151-1159(1989).
Henttu P., et al. Biochem. Biophys. Res. Commun. 160:903-910(1989).