

ECI1 Antibody
Purified Rabbit Polyclonal Antibody (Pab)
Catalog # AP53297**Specification**

ECI1 Antibody - Product Information

Application	WB
Primary Accession	P42126
Reactivity	Human
Host	Rabbit
Clonality	Polyclonal
Calculated MW	33 KDa
Antigen Region	253-302

ECI1 Antibody - Additional Information**Gene ID** 1632**Other Names**

Enoyl-CoA delta isomerase 1, mitochondrial, 5.3.3.8, 3, 2-trans-enoyl-CoA isomerase, Delta(3), Delta(2)-enoyl-CoA isomerase, D3, D2-enoyl-CoA isomerase, Dodecenoyl-CoA isomerase, ECI1, DCI

Dilution

WB~~ 1:1000

Format

Rabbit IgG in phosphate buffered saline , pH 7.4, 150mM NaCl, 0.09% (W/V) sodium azide and 50% glycerol

Storage

Store at -20 °C.Stable for 12 months from date of receipt

ECI1 Antibody - Protein Information**Name** ECI1**Synonyms** DCI**Function**

Key enzyme of fatty acid beta-oxidation (Probable). Able to isomerize both 3-cis (3Z) and 3-trans (3E) double bonds into the 2- trans (2E) form in a range of enoyl-CoA species, with a preference for (3Z)-enoyl-CoAs over (3E)-enoyl-CoAs (By similarity) (PubMed:7818490). The catalytic efficiency of this enzyme is not affected by the fatty acyl chain length (By similarity).

Cellular Location

Mitochondrion matrix {ECO:0000250|UniProtKB:P23965}

Tissue Location

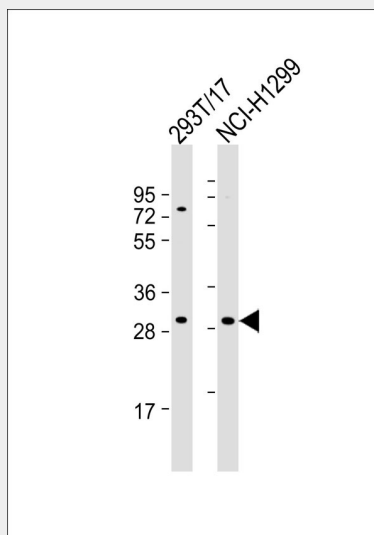
Expressed in liver (at protein level).

ECI1 Antibody - Protocols

Provided below are standard protocols that you may find useful for product applications.

- [Western Blot](#)
- [Blocking Peptides](#)
- [Dot Blot](#)
- [Immunohistochemistry](#)
- [Immunofluorescence](#)
- [Immunoprecipitation](#)
- [Flow Cytometry](#)
- [Cell Culture](#)

ECI1 Antibody - Images



All lanes : Anti-ECI1 Antibody at 1:1000 dilution Lane 1: 293T/17 whole cell lysate Lane 2: NCI-H1299 whole cell lysate Lysates/proteins at 20 µg per lane. Secondary Goat Anti-Rabbit IgG, (H+L), Peroxidase conjugated at 1/10000 dilution. Predicted band size : 33 kDa Blocking/Dilution buffer: 5% NFDM/TBST.

ECI1 Antibody - Background

Able to isomerize both 3-cis and 3-trans double bonds into the 2-trans form in a range of enoyl-CoA species.

ECI1 Antibody - References

- Janssen U., et al. *Genomics* 23:223-228(1994).
Ota T., et al. *Nat. Genet.* 36:40-45(2004).
Mural R.J., et al. Submitted (SEP-2005) to the EMBL/GenBank/DDBJ databases.
Kilponen J.M., et al. *Biochem. J.* 300:1-5(1994).
Takahashi Y., et al. *Biochem. J.* 304:849-852(1994).