

Complement C1S Antibody
Purified Rabbit Polyclonal Antibody (Pab)
Catalog # AP53288**Specification**

Complement C1S Antibody - Product Information

Application	WB
Primary Accession	P09871
Reactivity	Human
Host	Rabbit
Clonality	Polyclonal
Calculated MW	77 KDa
Antigen Region	548-597

Complement C1S Antibody - Additional Information**Gene ID** 716**Other Names**

Complement C1s subcomponent, 3.4.21.42, C1 esterase, Complement component 1 subcomponent s, Complement C1s subcomponent heavy chain, Complement C1s subcomponent light chain, C1S

Dilution

WB~~ 1:1000

Format

Rabbit IgG in phosphate buffered saline , pH 7.4, 150mM NaCl, 0.09% (W/V) sodium azide and 50% glycerol

Storage

Store at -20 °C. Stable for 12 months from date of receipt

Complement C1S Antibody - Protein Information**Name** C1S**Function**

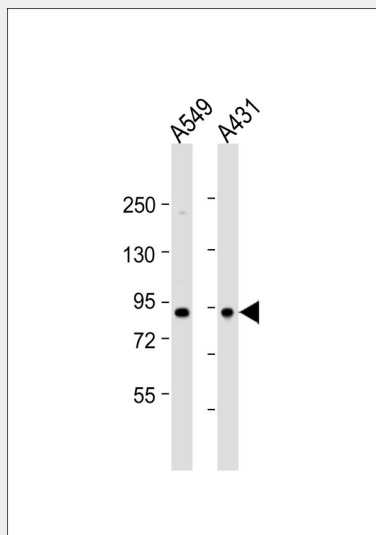
C1s B chain is a serine protease that combines with C1q and C1r to form C1, the first component of the classical pathway of the complement system. C1r activates C1s so that it can, in turn, activate C2 and C4. Cleaves also IGFBP5 and thereby inhibits the trophic effects of IGF1.

Complement C1S Antibody - Protocols

Provided below are standard protocols that you may find useful for product applications.

- [Western Blot](#)
- [Blocking Peptides](#)
- [Dot Blot](#)
- [Immunohistochemistry](#)
- [Immunofluorescence](#)
- [Immunoprecipitation](#)
- [Flow Cytometry](#)
- [Cell Culture](#)

Complement C1S Antibody - Images



All lanes : Anti-Complement C1S Antibody at 1:1000 dilution Lane 1: A549 whole cell lysate Lane 2: A431 whole cell lysate Lysates/proteins at 20 μ g per lane. Secondary Goat Anti-Rabbit IgG, (H+L), Peroxidase conjugated at 1/10000 dilution. Predicted band size : 77 kDa Blocking/Dilution buffer: 5% NFDN/TBST.

Complement C1S Antibody - Background

C1s B chain is a serine protease that combines with C1q and C1r to form C1, the first component of the classical pathway of the complement system. C1r activates C1s so that it can, in turn, activate C2 and C4.

Complement C1S Antibody - References

McKinnon C.M., et al. Eur. J. Biochem. 169:547-553(1987).
Tosi M., et al. Biochemistry 26:8516-8524(1987).
Kusumoto H., et al. Proc. Natl. Acad. Sci. U.S.A. 85:7307-7311(1988).
Mural R.J., et al. Submitted (SEP-2005) to the EMBL/GenBank/DBJ databases.
Endo Y., et al. J. Immunol. 161:4924-4930(1998).