

**HP1-gamma Antibody**  
**Purified Mouse Monoclonal Antibody (Mab)**  
**Catalog # AP53280**

**Specification**

---

**HP1-gamma Antibody - Product Information**

Application	IP, WB, IHC, ICC
Primary Accession	<a href="#">O13185</a>
Reactivity	Human, Mouse
Host	Mouse
Clonality	Monoclonal
Isotype	IgG1
Calculated MW	22 KDa

**HP1-gamma Antibody - Additional Information**

**Gene ID** 11335

**Other Names**

CBX 3;CBX3 ;CBX3\_HUMAN;Chromobox homolog 3 (HP1 gamma homolog, Drosophila);Chromobox homolog 3;Chromobox protein homolog 3 ;GAMMA; HECH;Heterochromatin like protein 1; Heterochromatin protein 1 homolog gamma;Heterochromatin protein HP1 gamma;HP1 gamma;HP1 gamma homolog;HP1Hs gamma;Modifier 2 protein.

**Dilution**

IP~~1:500  
WB~~1:1000  
IHC~~1:100  
ICC~~1:200

**Format**

Purified mouse monoclonal antibody in PBS(pH 7.4) containing with 0.09% (W/V) sodium azide and 50% glycerol.

**Storage**

Store at -20 °C.Stable for 12 months from date of receipt

**HP1-gamma Antibody - Protein Information**

**Name** CBX3

**Function**

Seems to be involved in transcriptional silencing in heterochromatin-like complexes. Recognizes and binds histone H3 tails methylated at 'Lys-9', leading to epigenetic repression. May contribute to the association of the heterochromatin with the inner nuclear membrane through its interaction with lamin B receptor (LBR). Involved in the formation of functional kinetochore through interaction with MIS12 complex proteins. Contributes to the conversion of local chromatin to a heterochromatin-like repressive state through H3 'Lys-9' trimethylation, mediates the recruitment

of the methyltransferases SUV39H1 and/or SUV39H2 by the PER complex to the E-box elements of the circadian target genes such as PER2 itself or PER1. Mediates the recruitment of NIPBL to sites of DNA damage at double-strand breaks (DSBs) (PubMed:<a href="http://www.uniprot.org/citations/28167679" target="\_blank">28167679</a>).

#### Cellular Location

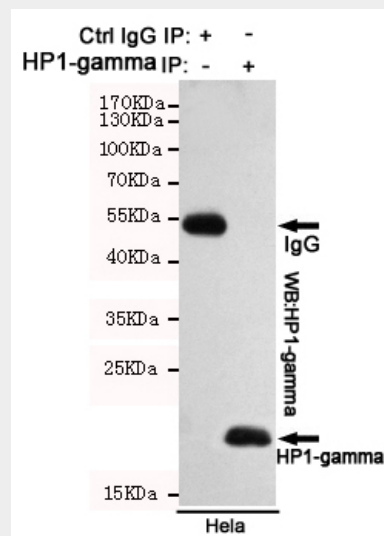
Nucleus. Note=Associates with euchromatin and is largely excluded from constitutive heterochromatin. May be associated with microtubules and mitotic poles during mitosis (Potential).

#### HP1-gamma Antibody - Protocols

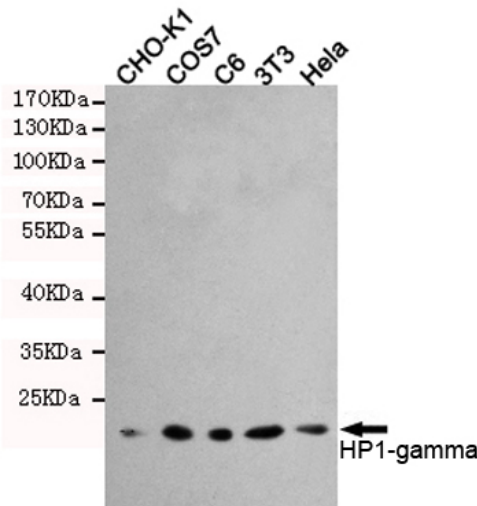
Provided below are standard protocols that you may find useful for product applications.

- [Western Blot](#)
- [Blocking Peptides](#)
- [Dot Blot](#)
- [Immunohistochemistry](#)
- [Immunofluorescence](#)
- [Immunoprecipitation](#)
- [Flow Cytometry](#)
- [Cell Culture](#)

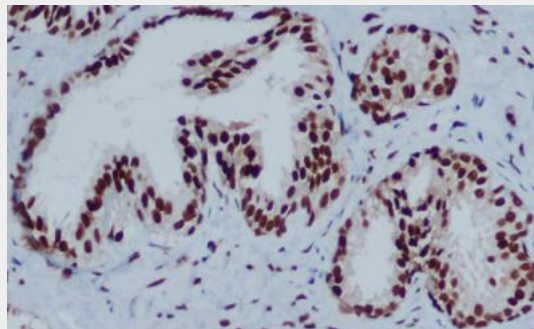
#### HP1-gamma Antibody - Images



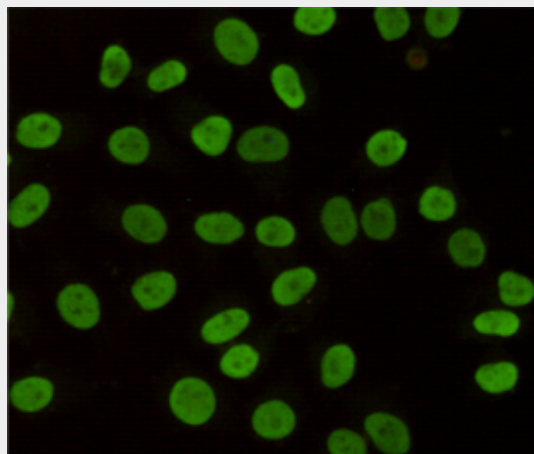
Immunoprecipitation analysis of HeLa cell lysates using HP1-gamma mouse mAb.



Western blot detection of HP1-gamma in HeLa,3T3,C6,COS7 and CHO-K1 cell lysates using HP1-gamma mouse mAb (1:1000 diluted).Predicted band size:22KDa.Observed band size:22KDa.



Immunohistochemical analysis of paraffin-embedded Prostate Cancer using HP1-gamma mouse mAb (1/200 dilution).Antigen retrieval was performed by pressure cooking in citrate buffer (pH 6.0).



Immunocytochemistry staining of HeLa cells fixed with 4% Paraformaldehyde and using anti-HP1-gamma mouse mAb (dilution 1:200).

**HP1-gamma Antibody - Background**

Seems to be involved in transcriptional silencing in heterochromatin-like complexes. Recognizes and binds histone H3 tails methylated at 'Lys-9', leading to epigenetic repression. May contribute to the association of the heterochromatin with the inner nuclear membrane through its interaction

with lamin B receptor (LBR). Involved in the formation of functional kinetochore through interaction with MIS12 complex proteins. Contributes to the conversion of local chromatin to a heterochromatin-like repressive state through H3 'Lys-9' trimethylation, mediates the recruitment of the methyltransferases SUV39H1 and/or SUV39H2 by the PER complex to the E-box elements of the circadian target genes such as PER2 itself or PER1.

#### **HP1-gamma Antibody - References**

- Ye Q., et al. J. Biol. Chem. 271:14653-14656(1996).  
Ye Q., et al. Submitted (JAN-1997) to the EMBL/GenBank/DDBJ databases.  
Koike N., et al. FEBS Lett. 467:17-21(2000).  
Chen J.H., et al. Submitted (MAR-1999) to the EMBL/GenBank/DDBJ databases.  
Lubec G., et al. Submitted (MAR-2007) to UniProtKB.