

**Eg5 Antibody**  
**Purified Mouse Monoclonal Antibody (Mab)**  
**Catalog # AP53275****Specification**

---

**Eg5 Antibody - Product Information**

Application	<b>IP, WB, ICC</b>
Primary Accession	<a href="#">P52732</a>
Reactivity	<b>Human</b>
Host	<b>Mouse</b>
Clonality	<b>Monoclonal</b>
Isotype	<b>IgG1</b>
Calculated MW	<b>130 KDa</b>

**Eg5 Antibody - Additional Information****Gene ID** 3832**Other Names**

EG5;HKSP;KIF11;KIF11\_HUMAN;kinesin family member 11;Kinesin like protein 1;Kinesin like spindle protein HKSP;Kinesin-like protein 1;Kinesin-like protein KIF11;Kinesin-like spindle protein HKSP;Kinesin-related motor protein Eg5;KNSL1;MCLMR;Thyroid receptor interacting protein 5;Thyroid receptor-interacting protein 5;TR-interacting protein 5; TRIP-5;TRIP5.

**Dilution**

IP~~1:500  
WB~~1:1000  
ICC~~1:200

**Format**

Purified mouse monoclonal antibody in PBS(pH 7.4) containing with 0.09% (W/V) sodium azide and 50% glycerol.

**Storage**

Store at -20 °C.Stable for 12 months from date of receipt

**Eg5 Antibody - Protein Information****Name** KIF11**Synonyms** EG5, KNSL1, TRIP5**Function**

Motor protein required for establishing a bipolar spindle and thus contributing to chromosome congression during mitosis (PubMed:<a href="http://www.uniprot.org/citations/19001501" target="\_blank">19001501</a>, PubMed:<a href="http://www.uniprot.org/citations/37728657" target="\_blank">37728657</a>). Required in non-mitotic cells for transport of secretory proteins from the Golgi complex to the cell surface (PubMed:<a

href="http://www.uniprot.org/citations/23857769" target="\_blank">23857769</a>).

### Cellular Location

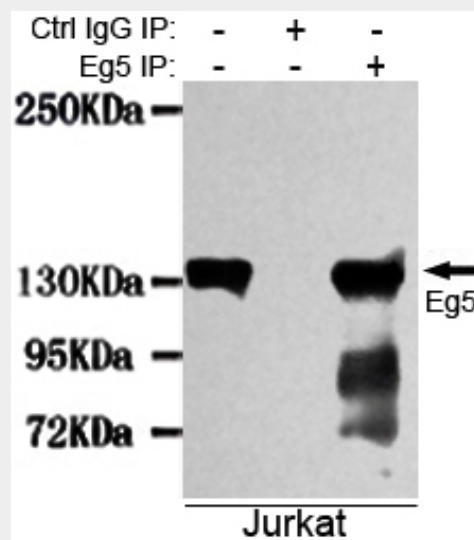
Cytoplasm. Cytoplasm, cytoskeleton, spindle pole

### Eg5 Antibody - Protocols

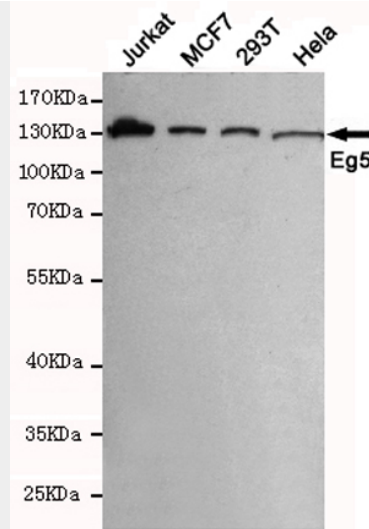
Provided below are standard protocols that you may find useful for product applications.

- [Western Blot](#)
- [Blocking Peptides](#)
- [Dot Blot](#)
- [Immunohistochemistry](#)
- [Immunofluorescence](#)
- [Immunoprecipitation](#)
- [Flow Cytometry](#)
- [Cell Culture](#)

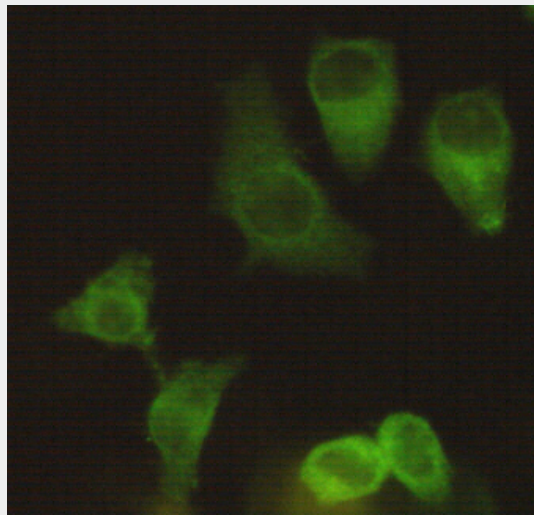
### Eg5 Antibody - Images



Immunoprecipitation analysis of Jurkat cell lysates using Eg5 mouse mAb.



Western blot detection of Eg5 in MCF7,293T,Jurkat and HeLa cell lysates using Eg5 mouse mAb (1:1000 diluted).Predicted band size:130KDa.Observed band size:130KDa.



Immunocytochemistry staining of HeLa using Eg5 mouse mAb (1:200).

### **Eg5 Antibody - Background**

Motor protein required for establishing a bipolar spindle. Blocking of KIF11 prevents centrosome migration and arrest cells in mitosis with monoastal microtubule arrays.

### **Eg5 Antibody - References**

- Blangy A.,et al.Cell 83:1159-1169(1995).
- Whitehead C.M.,et al.J. Cell Sci. 111:2551-2561(1998).
- Deloukas P.,et al.Nature 429:375-381(2004).
- Lee J.W.,et al.Mol. Endocrinol. 9:243-254(1995).
- Beausoleil S.A.,et al.Nat. Biotechnol. 24:1285-1292(2006).