

**TPC6A Antibody (N-term)**  
**Affinity Purified Rabbit Polyclonal Antibody (Pab)**  
**Catalog # AP5287a**

**Specification**

---

**TPC6A Antibody (N-term) - Product Information**

Application	WB, IHC-P, FC,E
Primary Accession	<a href="#">O75865</a>
Reactivity	Human
Host	Rabbit
Clonality	Polyclonal
Isotype	Rabbit IgG
Calculated MW	17605
Antigen Region	34-62

**TPC6A Antibody (N-term) - Additional Information**

**Gene ID** 79090

**Other Names**

Trafficking protein particle complex subunit 6A, TRAPP complex subunit 6A, TRAPPC6A

**Target/Specificity**

This TPC6A antibody is generated from rabbits immunized with a KLH conjugated synthetic peptide between 34-62 amino acids from the N-terminal region of human TPC6A.

**Dilution**

WB~~1:1000  
IHC-P~~1:50~100  
FC~~1:10~50

**Format**

Purified polyclonal antibody supplied in PBS with 0.09% (W/V) sodium azide. This antibody is purified through a protein A column, followed by peptide affinity purification.

**Storage**

Maintain refrigerated at 2-8°C for up to 2 weeks. For long term storage store at -20°C in small aliquots to prevent freeze-thaw cycles.

**Precautions**

TPC6A Antibody (N-term) is for research use only and not for use in diagnostic or therapeutic procedures.

**TPC6A Antibody (N-term) - Protein Information**

**Name** TRAPPC6A {ECO:0000303|PubMed:19416478, ECO:0000312|HGNC:HGNC:23069}

**Function** May play a role in vesicular transport during the biogenesis of melanosomes.

### Cellular Location

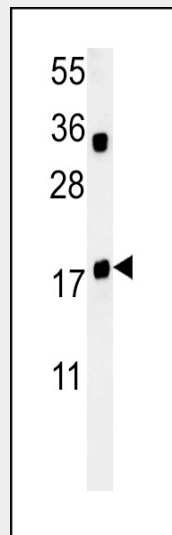
Golgi apparatus, cis-Golgi network. Endoplasmic reticulum

### TPC6A Antibody (N-term) - Protocols

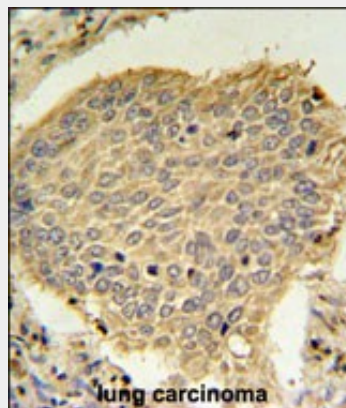
Provided below are standard protocols that you may find useful for product applications.

- [Western Blot](#)
- [Blocking Peptides](#)
- [Dot Blot](#)
- [Immunohistochemistry](#)
- [Immunofluorescence](#)
- [Immunoprecipitation](#)
- [Flow Cytometry](#)
- [Cell Culture](#)

### TPC6A Antibody (N-term) - Images

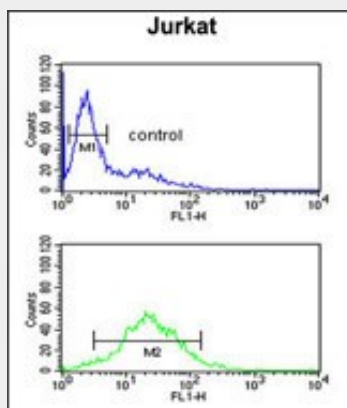


TPC6A Antibody (N-term) [Cat. #AP5287a] western blot analysis in Jurkat cell line lysates (35ug/lane). This demonstrates the TPC6A antibody detected the TPC6A protein (arrow).



TPC6A Antibody (N-term) (Cat. #AP5287a) IHC analysis in formalin fixed and paraffin embedded human lung carcinoma followed by peroxidase conjugation of the secondary antibody and DAB staining. This data demonstrates the use of the TPC6A Antibody (N-term) for

immunohistochemistry. Clinical relevance has not been evaluated.



TPC6A Antibody (N-term) (Cat. #AP5287a) flow cytometric analysis of Jurkat cells (bottom histogram) compared to a negative control cell (top histogram). FITC-conjugated goat-anti-rabbit secondary antibodies were used for the analysis.

#### **TPC6A Antibody (N-term) - Background**

TRAPPC6A is a subunit of the TRAPP I and II complexes.

#### **TPC6A Antibody (N-term) - References**

- Lowe, J.K., et al. PLoS Genet. 5 (2), E1000365 (2009)
- Gwynn, B., et al. Genomics 88(2):196-203(2006)
- Kim, M.S., et al. Traffic 6(12):1183-1195(2005)