

**GRAP2 Antibody**  
**Purified Mouse Monoclonal Antibody (Mab)**  
**Catalog # AP52864**

**Specification**

---

**GRAP2 Antibody - Product Information**

Application	<b>WB</b>
Primary Accession	<a href="#">O75791</a>
Reactivity	<b>Human</b>
Host	<b>Mouse</b>
Clonality	<b>Monoclonal</b>
Isotype	<b>IgG2b</b>
Calculated MW	<b>38 KDa</b>

**GRAP2 Antibody - Additional Information**

**Gene ID** 9402

**Other Names**

Adapter protein GRID; GADS; GADS protein; GRAP-2; Grap2; GRAP2\_HUMAN; GRB-2-like protein; GRB2-related adapter protein 2; GRB2-related adaptor protein 2; GRB2-related protein with insert domain; GRB2L; GRBLG; GRBX; Grf-40; Grf40 adapter protein; Grf40; GRID; Growth factor receptor-binding protein; Growth factor receptor-bound protein 2-related adaptor protein 2; GRPL; Hema; Hematopoietic cell-associated adapter protein GrpL; Hematopoietic cell-associated adaptor protein GRPL; Mona; p38; Protein GADS; SH3-SH2-SH3 adapter Mona; SH3-SH2-SH3 adaptor molecule.

**Dilution**

WB~~1:1000

**Format**

Purified mouse monoclonal antibody in PBS(pH 7.4) containing with 0.09% (W/V) sodium azide and 50% glycerol.

**Storage**

Store at -20 °C.Stable for 12 months from date of receipt

**GRAP2 Antibody - Protein Information**

**Name** GRAP2

**Synonyms** GADS, GRB2L, GRID

**Function**

Interacts with SLP-76 to regulate NF-AT activation. Binds to tyrosine-phosphorylated shc.

**Cellular Location**

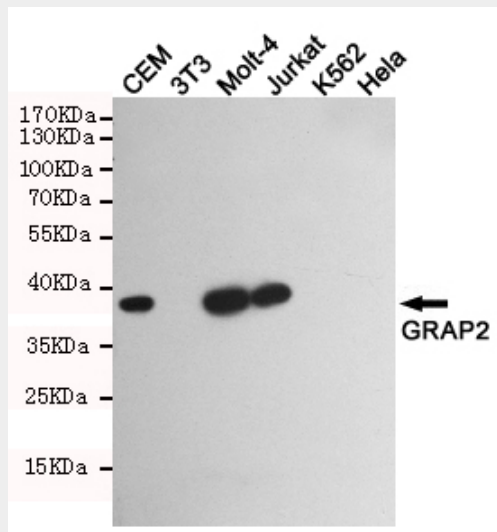
Nucleus. Cytoplasm. Endosome

## GRAP2 Antibody - Protocols

Provided below are standard protocols that you may find useful for product applications.

- [Western Blot](#)
- [Blocking Peptides](#)
- [Dot Blot](#)
- [Immunohistochemistry](#)
- [Immunofluorescence](#)
- [Immunoprecipitation](#)
- [Flow Cytometry](#)
- [Cell Culture](#)

## GRAP2 Antibody - Images



Western blot detection of GRAP2 in GRAP2 positive cell (CEM, Molt-4, Jurkat) and negative cell (3T3, K562, HeLa) lysates using GRAP2 mouse mAb (1:1000 diluted). Predicted band size: 38 kDa. Observed band size: 38 kDa.

## GRAP2 Antibody - Background

Interacts with SLP-76 to regulate NF-AT activation. Binds to tyrosine-phosphorylated shc.

## GRAP2 Antibody - References

- Qiu M., et al. *Biochem. Biophys. Res. Commun.* 253:443-447(1998).  
Law C.-L., et al. *J. Exp. Med.* 189:1243-1253(1999).  
Asada H., et al. *J. Exp. Med.* 189:1383-1390(1999).  
Ellis J.H., et al. *J. Immunol.* 164:5805-5814(2000).  
Guyot B., et al. *Gene* 290:173-179(2002).