

ERCC1 Antibody
Purified Mouse Monoclonal Antibody (Mab)
Catalog # AP52840**Specification**

ERCC1 Antibody - Product Information

Application	WB
Primary Accession	P07992
Reactivity	Human
Host	Mouse
Clonality	Monoclonal
Isotype	IgG2b
Calculated MW	39 KDa

ERCC1 Antibody - Additional Information**Gene ID** 2067**Other Names**

COFS 4;COFS4;DNA excision repair protein ERCC 1;DNA excision repair protein ERCC-1;DNA excision repair protein ERCC1;ERCC 1;ERCC1;ERCC1_HUMAN;Excision repair cross complementing 1;Excision Repair Cross Complementing Rodent Repair Deficiency Complementation Group 1;Excision repair protein;RAD 10;RAD10;UV 20;UV20.

Dilution

WB~~1:1000

Format

Purified mouse monoclonal antibody in PBS(pH 7.4) containing with 0.09% (W/V) sodium azide,0.1mg/mlBSA and 50% glycerol.

Storage

Store at -20 °C.Stable for 12 months from date of receipt

ERCC1 Antibody - Protein Information**Name** ERCC1**Function**

[Isoform 1]: Non-catalytic component of a structure-specific DNA repair endonuclease responsible for the 5'-incision during DNA repair. Responsible, in conjunction with SLX4, for the first step in the repair of interstrand cross-links (ICL). Participates in the processing of anaphase bridge-generating DNA structures, which consist in incompletely processed DNA lesions arising during S or G2 phase, and can result in cytokinesis failure. Also required for homology-directed repair (HDR) of DNA double-strand breaks, in conjunction with SLX4.

Cellular Location

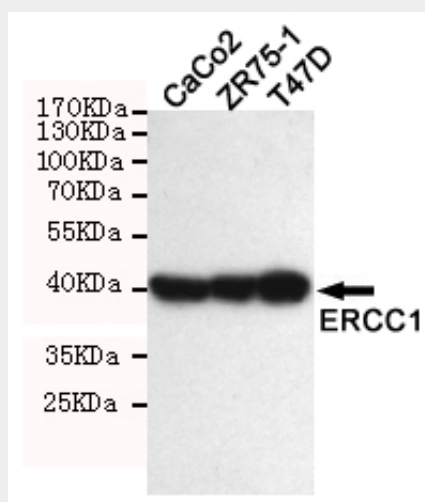
[Isoform 1]: Nucleus [Isoform 3]: Nucleus

ERCC1 Antibody - Protocols

Provided below are standard protocols that you may find useful for product applications.

- [Western Blot](#)
- [Blocking Peptides](#)
- [Dot Blot](#)
- [Immunohistochemistry](#)
- [Immunofluorescence](#)
- [Immunoprecipitation](#)
- [Flow Cytometry](#)
- [Cell Culture](#)

ERCC1 Antibody - Images



Western blot detection of ERCC1 in T47D,ZR75-1,CaCO2 and Molt-4 cell lysate using ERCC1 mouse mAb (1:1000 diluted). Predicted band size: 39KDa. Observed band size: 39KDa.

ERCC1 Antibody - Background

Isoform 1: Non-catalytic component of a structure- specific DNA repair endonuclease responsible for the 5'-incision during DNA repair. Responsible, in conjunction with SLX4, for the first step in the repair of interstrand cross-links (ICL). Participates in the processing of anaphase bridge-generating DNA structures, which consist in incompletely processed DNA lesions arising during S or G2 phase, and can result in cytokinesis failure. Also required for homology-directed repair (HDR) of DNA double-strand breaks, in conjunction with SLX4.

ERCC1 Antibody - References

- van Duin M.,et al.Cell 44:913-923(1986).
Hoeijmakers J.H.J.,et al.Cold Spring Harb. Symp. Quant. Biol. 51:91-101(1986).
Yu J.J.,et al.Mutat. Res. 382:13-20(1997).
Hisatomi H.,et al.Submitted (AUG-2001) to the EMBL/GenBank/DDBJ databases.
Ota T.,et al.Nat. Genet. 36:40-45(2004).