

Keratin(50-60kDa) Antibody
Purified Mouse Monoclonal Antibody (Mab)
Catalog # AP52831

Specification

Keratin(50-60kDa) Antibody - Product Information

Application	WB
Primary Accession	P13647
Reactivity	Human, Mouse
Host	Mouse
Clonality	Monoclonal
Isotype	IgG1
Calculated MW	62 KDa

Keratin(50-60kDa) Antibody - Additional Information

Gene ID 3852

Other Names

58 kDa cytokeratin; CK 5; CK-5; CK5; Cytokeratin-5; Cytokeratin5; DDD; DDD1; EBS 2; EBS2; epidermolysis bullosa simplex 2 Dowling-Meara/Kobner/Weber-Cockayne types; K2C5_HUMAN; K5; Keratin 5 (epidermolysis bullosa simplex Dowling-Meara/Kobner/Weber-Cockayne types); keratin 5 (epidermolysis bullosa simplex, Dowling-Meara/Kobner/Weber-Cockayne types); Keratin 5; Keratin; keratin complex 2, basic, gene 5; Keratin Type II Cytoskeletal 5; keratin, type II cytoskeletal 5; Keratin-5; Keratin5; KRT 5; KRT 5A; KRT5; KRT5A; type II cytoskeletal 5; Type-II keratin Kb5.

Dilution

WB~~1:2000

Format

Purified mouse monoclonal antibody in PBS(pH 7.4) containing with 0.09% (W/V) sodium azide and 50% glycerol.

Storage

Store at -20 °C.Stable for 12 months from date of receipt

Keratin(50-60kDa) Antibody - Protein Information

Name KRT5

Function

Required for the formation of keratin intermediate filaments in the basal epidermis and maintenance of the skin barrier in response to mechanical stress (By similarity). Regulates the recruitment of Langerhans cells to the epidermis, potentially by modulation of the abundance of macrophage chemotactic cytokines, macrophage inflammatory cytokines and CTNND1 localization in keratinocytes (By similarity).

Cellular Location

Cytoplasm.

Tissue Location

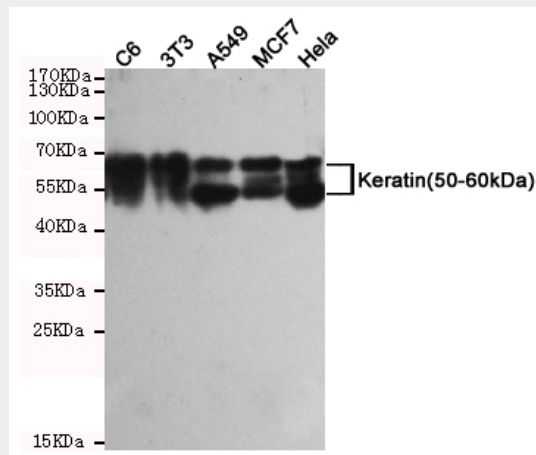
Expressed in corneal epithelium (at protein level) (PubMed:26758872). Expressed in keratinocytes (at protein level) (PubMed:20128788, PubMed:31302245).

Keratin(50-60kDa) Antibody - Protocols

Provided below are standard protocols that you may find useful for product applications.

- [Western Blot](#)
- [Blocking Peptides](#)
- [Dot Blot](#)
- [Immunohistochemistry](#)
- [Immunofluorescence](#)
- [Immunoprecipitation](#)
- [Flow Cytometry](#)
- [Cell Culture](#)

Keratin(50-60kDa) Antibody - Images



Western blot detection of Keratin(50-60kDa) in C6,3T3,A549,MCF7 and HeLa cell lysates using Keratin(50-60kDa) mouse mAb (1:2000 diluted).Predicted band size50~60KDa.Observed band size:50~60KDa.

Keratin(50-60kDa) Antibody - References

- Eckert R.L.,et al.DNA 7:337-345(1988).
Lersch R.,et al.Mol. Cell. Biol. 9:3685-3697(1989).
Whitlock N.V.,et al.Biochem. Biophys. Res. Commun. 274:149-152(2000).
Lersch R.,et al.Mol. Cell. Biol. 8:486-493(1988).
Xu Z.,et al.Clin. Exp. Dermatol. 29:74-76(2004).