

STAT3 Antibody
Purified Mouse Monoclonal Antibody (Mab)
Catalog # AP52814**Specification**

STAT3 Antibody - Product Information

Application	WB
Primary Accession	P40763
Reactivity	Human, Mouse
Host	Mouse
Clonality	Monoclonal
Isotype	IgG1
Calculated MW	88 KDa

STAT3 Antibody - Additional Information**Gene ID** 6774**Other Names**

1110034C02Rik;Acute Phase Response Factor;Acute-phase response factor;APRF;AW109958;DNA binding protein APRF;FLJ20882;HIES;MGC128731; MGC16063;MGC93551;Signal transducer and activator of transcription 3 (acute-phase response factor);Signal transducer and activator of transcription 3;STAT 3;Stat3;STAT3_HUMAN;Transcription factor.

Dilution

WB~~1:1000

Format

ascites

Storage

Store at -20 °C.Stable for 12 months from date of receipt

STAT3 Antibody - Protein Information**Name** STAT3 {ECO:0000303|PubMed:9630560, ECO:0000312|HGNC:HGNC:11364}**Function**

Signal transducer and transcription activator that mediates cellular responses to interleukins, KITLG/SCF, LEP and other growth factors (PubMed:10688651, PubMed:12359225, PubMed:12873986, PubMed:15194700, PubMed:15653507, PubMed:16285960, PubMed:17344214, PubMed:18242580, PubMed:<a

<http://www.uniprot.org/citations/18782771> target="_blank">18782771, PubMed:22306293, PubMed:23084476, PubMed:28262505, PubMed:32929201). Once activated, recruits coactivators, such as NCOA1 or MED1, to the promoter region of the target gene (PubMed:15653507, PubMed:16285960, PubMed:17344214, PubMed:18782771, PubMed:28262505, PubMed:32929201). May mediate cellular responses to activated FGFR1, FGFR2, FGFR3 and FGFR4 (PubMed:12873986). Upon activation of IL6ST/gp130 signaling by interleukin-6 (IL6), binds to the IL6-responsive elements identified in the promoters of various acute-phase protein genes (PubMed:12359225). Activated by IL31 through IL31RA (PubMed:15194700). Acts as a regulator of inflammatory response by regulating differentiation of naive CD4(+) T-cells into T-helper Th17 or regulatory T-cells (Treg): acetylation promotes its transcription activity and cell differentiation while deacetylation and oxidation of lysine residues by LOXL3 inhibits differentiation (PubMed:28065600, PubMed:28262505). Involved in cell cycle regulation by inducing the expression of key genes for the progression from G1 to S phase, such as CCND1 (PubMed:17344214). Mediates the effects of LEP on melanocortin production, body energy homeostasis and lactation (By similarity). May play an apoptotic role by transactivating BIRC5 expression under LEP activation (PubMed:18242580). Cytoplasmic STAT3 represses macroautophagy by inhibiting EIF2AK2/PKR activity (PubMed:23084476). Plays a crucial role in basal beta cell functions, such as regulation of insulin secretion (By similarity). Following JAK/STAT signaling activation and as part of a complex with NFATC3 and NFATC4, binds to the alpha-beta E4 promoter region of CRYAB and activates transcription in cardiomyocytes (By similarity).

Cellular Location

Cytoplasm. Nucleus. Note=Shuttles between the nucleus and the cytoplasm. Translocated into the nucleus upon tyrosine phosphorylation and dimerization, in response to signaling by activated FGFR1, FGFR2, FGFR3 or FGFR4 (PubMed:15653507, PubMed:16285960). Constitutive nuclear presence is independent of tyrosine phosphorylation. Predominantly present in the cytoplasm without stimuli. Upon leukemia inhibitory factor (LIF) stimulation, accumulates in the nucleus. The complex composed of BART and ARL2 plays an important role in the nuclear translocation and retention of STAT3. Identified in a complex with LYN and PAG1. Translocates to the nucleus in the presence of EDN1 (By similarity). {ECO:0000250|UniProtKB:P52631, ECO:0000269|PubMed:15653507, ECO:0000269|PubMed:16285960}

Tissue Location

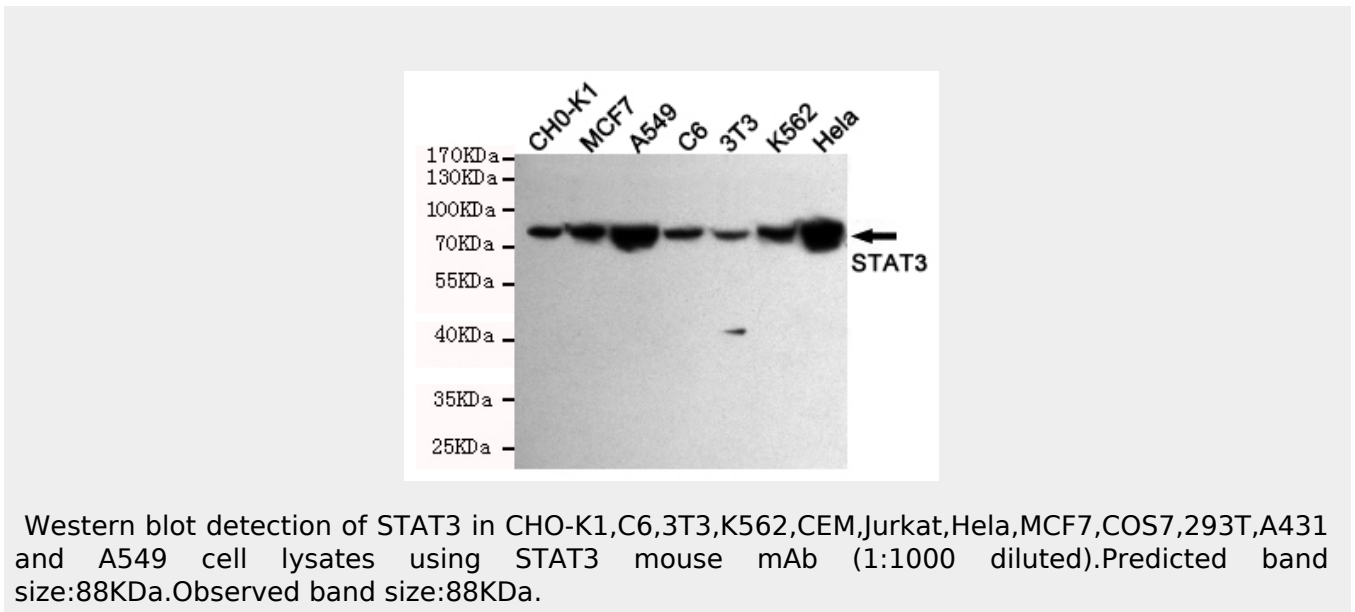
Heart, brain, placenta, lung, liver, skeletal muscle, kidney and pancreas. Expressed in naive CD4(+) T cells as well as T-helper Th17, Th1 and Th2 cells (PubMed:31899195)

STAT3 Antibody - Protocols

Provided below are standard protocols that you may find useful for product applications.

- [Western Blot](#)
- [Blocking Peptides](#)
- [Dot Blot](#)
- [Immunohistochemistry](#)
- [Immunofluorescence](#)
- [Immunoprecipitation](#)
- [Flow Cytometry](#)
- [Cell Culture](#)

STAT3 Antibody - Images



STAT3 Antibody - Background

Signal transducer and transcription activator that mediates cellular responses to interleukins, KITLG/SCF and other growth factors. May mediate cellular responses to activated FGFR1, FGFR2, FGFR3 and FGFR4. Binds to the interleukin-6 (IL-6)- responsive elements identified in the promoters of various acute- phase protein genes. Activated by IL31 through IL31RA. Cytoplasmic STAT3 represses macroautophagy by inhibiting EIF2AK2/PKR activity. Plays an important role in host defense in methicillin-resistant *S.aureus* lung infection by regulating the expression of the antimicrobial lectin REG3G (By similarity).

STAT3 Antibody - References

- Akira S., et al. *Cell* 77:63-71(1994).
Della Pietra L., et al. *Gene* 213:119-124(1998).
Feinstein E., et al. Patent number EP2440214, 18-APR-2012.
Ota T., et al. *Nat. Genet.* 36:40-45(2004).
Zody M.C., et al. *Nature* 440:1045-1049(2006).