

ALDH2 Antibody
Purified Mouse Monoclonal Antibody (Mab)
Catalog # AP52793**Specification**

ALDH2 Antibody - Product Information

Application	WB
Primary Accession	P05091
Reactivity	Human, Mouse
Host	Mouse
Clonality	Monoclonal
Isotype	IgG1
Calculated MW	56 KDa

ALDH2 Antibody - Additional Information**Gene ID** 217**Other Names**

Acetaldehyde dehydrogenase 2;Aldehyde dehydrogenase 2 family (mitochondrial);Aldehyde dehydrogenase 2 family;Aldehyde dehydrogenase mitochondrial;Aldehyde dehydrogenase, mitochondrial;ALDH 2;ALDH class 2;ALDH E2;ALDH-E2;Aldh2;ALDH2_HUMAN;ALDH1;ALDM;Liver mitochondrial ALDH;MGC1806;Mitochondrial aldehyde dehydrogenase 2;MS767;Nucleus encoded mitochondrial aldehyde dehydrogenase 2.

Dilution

WB~~1:1000

Format

Purified mouse monoclonal in PBS(pH 7.4) containing with 0.09% (W/V) sodium azide and 50% glycerol.

Storage

Store at -20 °C.Stable for 12 months from date of receipt

ALDH2 Antibody - Protein Information**Name** ALDH2**Synonyms** ALDM**Function**

Required for clearance of cellular formaldehyde, a cytotoxic and carcinogenic metabolite that induces DNA damage.

Cellular Location

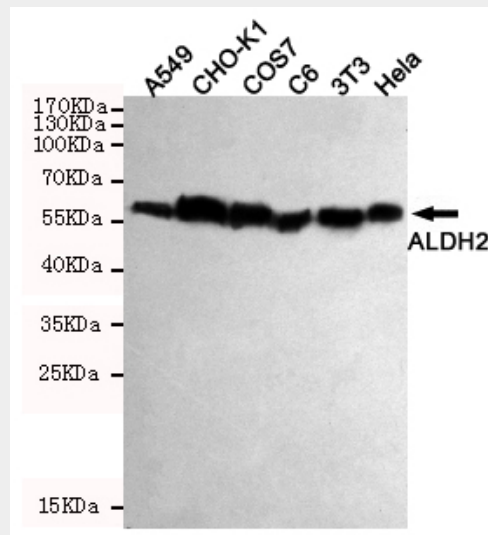
Mitochondrion matrix.

ALDH2 Antibody - Protocols

Provided below are standard protocols that you may find useful for product applications.

- [Western Blot](#)
- [Blocking Peptides](#)
- [Dot Blot](#)
- [Immunohistochemistry](#)
- [Immunofluorescence](#)
- [Immunoprecipitation](#)
- [Flow Cytometry](#)
- [Cell Culture](#)

ALDH2 Antibody - Images



Western blot detection of ALDH2 in HeLa, 3T3, C6, COS7, CHO-K1 and A549 cell lysates using ALDH2 mouse mAb (1:1000 diluted). Predicted band size: 56 kDa. Observed band size: 56 kDa.

ALDH2 Antibody - References

- Braun T., et al. FEBS Lett. 215:233-236(1987).
Braun T., et al. FEBS Lett. 233:440-440(1988).
Braun T., et al. Nucleic Acids Res. 15:3179-3179(1987).
Hsu L.C., et al. Genomics 2:57-65(1988).
Lassen N., et al. Submitted (MAY-2004) to the EMBL/GenBank/DDBJ databases.