

Hsp27 Antibody
Purified Mouse Monoclonal Antibody (Mab)
Catalog # AP52776**Specification**

Hsp27 Antibody - Product Information

Application	WB, ICC
Primary Accession	P04792
Reactivity	Human
Host	Mouse
Clonality	Monoclonal
Isotype	IgG1
Calculated MW	27 KDa

Hsp27 Antibody - Additional Information**Gene ID** 3315**Other Names**

Heat shock 27kDa protein;28 kDa heat shock protein;CMT2F;DKFZp586P1322;Estrogen regulated 24 kDa protein;Estrogen-regulated 24 kDa protein;Heat shock 25kDa protein 1;Heat shock 27 kDa protein;Heat shock 27kD protein 1;Heat shock 27kDa protein 1;Heat shock 28kDa protein 1;Heat Shock Protein 27;Heat Shock Protein 27;Heat shock protein beta 1;Heat shock protein beta-1;HMN2B;HS.76067;Hsp 25;HSP 27;Hsp 28;Hsp B1;Hsp25;HSP27;Hsp28;HspB1;HSPB1_HUMAN;SRP27;Stress responsive protein 27;Stress-responsive protein 27.

Dilution

WB~~1:1000

ICC~~1:300

Format

Purified mouse monoclonal in PBS(pH 7.4) containing with 0.09% (W/V) sodium azide, 50% glycerol, 0.1%BSA

Storage

Store at -20 °C.Stable for 12 months from date of receipt

Hsp27 Antibody - Protein Information**Name** HSPB1**Synonyms** HSP27, HSP28**Function**

Small heat shock protein which functions as a molecular chaperone probably maintaining denatured proteins in a folding- competent state (PubMed:10383393, PubMed:20178975). Plays a role

in stress resistance and actin organization (PubMed:19166925). Through its molecular chaperone activity may regulate numerous biological processes including the phosphorylation and the axonal transport of neurofilament proteins (PubMed:23728742).

Cellular Location

Cytoplasm. Nucleus Cytoplasm, cytoskeleton, spindle Note=Cytoplasmic in interphase cells. Colocalizes with mitotic spindles in mitotic cells. Translocates to the nucleus during heat shock and resides in sub-nuclear structures known as SC35 speckles or nuclear splicing speckles.

Tissue Location

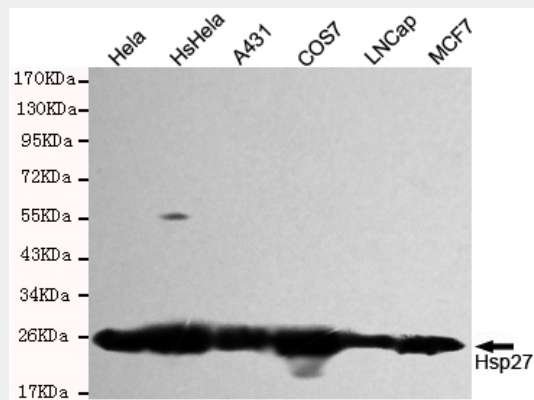
Detected in all tissues tested: skeletal muscle, heart, aorta, large intestine, small intestine, stomach, esophagus, bladder, adrenal gland, thyroid, pancreas, testis, adipose tissue, kidney, liver, spleen, cerebral cortex, blood serum and cerebrospinal fluid. Highest levels are found in the heart and in tissues composed of striated and smooth muscle.

Hsp27 Antibody - Protocols

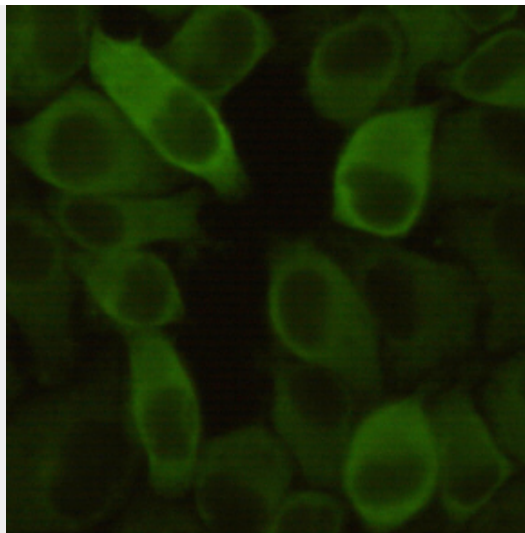
Provided below are standard protocols that you may find useful for product applications.

- [Western Blot](#)
- [Blocking Peptides](#)
- [Dot Blot](#)
- [Immunohistochemistry](#)
- [Immunofluorescence](#)
- [Immunoprecipitation](#)
- [Flow Cytometry](#)
- [Cell Culture](#)

Hsp27 Antibody - Images



Western blot detection of Hsp27 in HeLa, HsHeLa, A431, COS7, Lncap and MCF7 cell lysates and using Hsp27 mouse mAb (1:1000 diluted). Predicted band size: 23 kDa. Observed band size: 27 kDa.



Immunocytochemistry stain of HeLa using Hsp27 mouse mAb (1:300).

Hsp27 Antibody - Background

Involved in stress resistance and actin organization.

Hsp27 Antibody - References

- Hickey E., et al. *Nucleic Acids Res.* 14:4127-4145(1986).
Carper S.W., et al. *Nucleic Acids Res.* 18:6457-6457(1990).
Hino M., et al. *Biochem. Biophys. Res. Commun.* 271:164-169(2000).
Briolay J., et al. Submitted (JUN-1993) to the EMBL/GenBank/DDBJ databases.
Yu W., et al. *Genome Res.* 7:353-358(1997).