

Musashi-1 Antibody
Purified Mouse Monoclonal Antibody (Mab)
Catalog # AP52765

Specification

Musashi-1 Antibody - Product Information

Application	WB
Primary Accession	O43347
Reactivity	Human, Mouse
Host	Mouse
Clonality	Monoclonal
Isotype	IgG2b
Calculated MW	39 KDa

Musashi-1 Antibody - Additional Information

Gene ID 4440

Other Names

MSI1;Musashi-1;Msi 1;Msi1;MSI1H_HUMAN;Musashi homolog 1;Musashi-1;Musashi1;RNA binding protein Musashi homolog 1;RNA-binding protein Musashi homolog 1.

Dilution

WB~~1:1000

Format

Purified mouse monoclonal in PBS(pH 7.4) containing with 0.09% (W/V) sodium azide, 50% glycerol, 0.1%BSA

Storage

Store at -20 °C.Stable for 12 months from date of receipt

Musashi-1 Antibody - Protein Information

Name MSI1

Function

RNA binding protein that regulates the expression of target mRNAs at the translation level. Regulates expression of the NOTCH1 antagonist NUMB. Binds RNA containing the sequence 5'-GUUAGUUAGUUAGUU- 3' and other sequences containing the pattern 5'-[GA]U(1-3)AGU-3'. May play a role in the proliferation and maintenance of stem cells in the central nervous system (By similarity).

Cellular Location

Cytoplasm {ECO:0000250|UniProtKB:Q61474}. Nucleus {ECO:0000250|UniProtKB:Q61474}

Tissue Location

Detected in fetal kidney, brain, liver and lung, and in adult brain and pancreas. Detected in

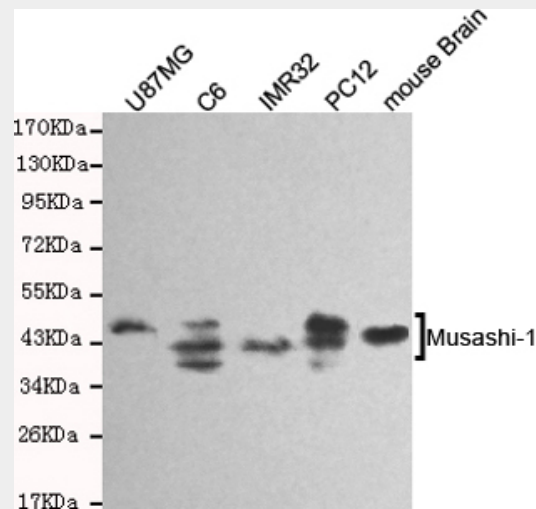
hepatoma cell lines

Musashi-1 Antibody - Protocols

Provided below are standard protocols that you may find useful for product applications.

- [Western Blot](#)
- [Blocking Peptides](#)
- [Dot Blot](#)
- [Immunohistochemistry](#)
- [Immunofluorescence](#)
- [Immunoprecipitation](#)
- [Flow Cytometry](#)
- [Cell Culture](#)

Musashi-1 Antibody - Images



Western blot detection of Musashi-1 in U87MG,C6,IMR32,mouse brain and PC12 cell lysates and using Musashi-1 mouse mAb (1:1000 diluted).Predicted band size: 39KDa.Observed band size:39KDa.

Musashi-1 Antibody - Background

RNA binding protein that regulates the expression of target mRNAs at the translation level. Regulates expression of the NOTCH1 antagonist NUMB. Binds RNA containing the sequence 5'-GUUAGUUAGUUAGUU-3' and other sequences containing the pattern 5'- [GA]U(1-3)AGU-3'. May play a role in the proliferation and maintenance of stem cells in the central nervous system (By similarity).

Musashi-1 Antibody - References

- Good P.,et al.Genomics 52:382-384(1998).
Scherer S.E.,et al.Nature 440:346-351(2006).
Shu H.-J.,et al.Biochem. Biophys. Res. Commun. 293:150-154(2002).
Okano H.,et al.J. Cell Sci. 115:1355-1359(2002).
Gauci S.,et al.Anal. Chem. 81:4493-4501(2009).