

RAB4A Antibody
Purified Mouse Monoclonal Antibody (Mab)
Catalog # AP52759**Specification**

RAB4A Antibody - Product Information

Application	WB
Primary Accession	P20338
Reactivity	Human, Mouse
Host	Mouse
Clonality	Monoclonal
Isotype	IgG2a
Calculated MW	24 KDa

RAB4A Antibody - Additional Information**Gene ID** 5867**Other Names**

HRES 1 / RAB4;Oncogene RAB4;OTTHUMP00000042824;Rab 4;RAB 4A;RAB4 member RAS oncogene family;RAB4A;RAB4A member RAS oncogene family;RAB4A_HUMAN;Ras related protein Rab 4A;Ras related protein Rab4A;Ras-related protein Rab-4A.

Dilution

WB~~1:500

Format

Purified mouse monoclonal in PBS(pH 7.4) containing with 0.09% (W/V) sodium azide and 50% glycerol.

Storage

Store at -20 °C.Stable for 12 months from date of receipt

RAB4A Antibody - Protein Information**Name** RAB4A**Synonyms** RAB4**Function**

Small GTPase which cycles between an active GTP-bound and an inactive GDP-bound state (PubMed:15907487, PubMed:16034420). Involved in protein transport (PubMed:29425100). Plays a role in vesicular traffic. Mediates VEGFR2 endosomal trafficking to enhance VEGFR2 signaling (PubMed:29425100). Acts as a regulator of platelet alpha- granule release during activation and aggregation of platelets (By

similarity).

Cellular Location

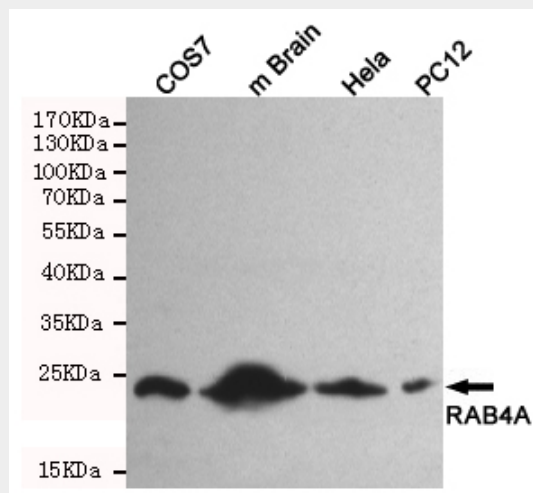
Membrane; Peripheral membrane protein. Cytoplasm Early endosome membrane {ECO:0000250|UniProtKB:P05714}; Peripheral membrane protein {ECO:0000250|UniProtKB:P05714}. Recycling endosome membrane {ECO:0000250|UniProtKB:P05714}; Peripheral membrane protein {ECO:0000250|UniProtKB:P05714}. Note=Generally associated with membranes. Cytoplasmic when phosphorylated by CDK1

RAB4A Antibody - Protocols

Provided below are standard protocols that you may find useful for product applications.

- [Western Blot](#)
- [Blocking Peptides](#)
- [Dot Blot](#)
- [Immunohistochemistry](#)
- [Immunofluorescence](#)
- [Immunoprecipitation](#)
- [Flow Cytometry](#)
- [Cell Culture](#)

RAB4A Antibody - Images



Western blot detection of RAB4A in HeLa,PC-12,COS7 and mouse brain cell lysates using RAB4A mouse mAb (1:500 diluted).Predicted band size:24KDa.Observed band size:24KDa.

RAB4A Antibody - Background

Protein transport. Probably involved in vesicular traffic (By similarity).

RAB4A Antibody - References

- Zahraoui A.,et al.J. Biol. Chem. 264:12394-12401(1989).
Nagy G.,et al.J. Biol. Chem. 281:34574-34591(2006).
Puhl H.L. III,et al.Submitted (APR-2002) to the EMBL/GenBank/DDBJ databases.
Ota T.,et al.Nat. Genet. 36:40-45(2004).

Gregory S.G., et al. Nature 441:315-321(2006).