

Pyruvate Dehydrogenase E2 Antibody
Purified Mouse Monoclonal Antibody (Mab)
Catalog # AP52757

Specification

Pyruvate Dehydrogenase E2 Antibody - Product Information

Application	IP, WB, ICC
Primary Accession	P10515
Reactivity	Human, Mouse
Host	Mouse
Clonality	Monoclonal
Isotype	IgG1
Calculated MW	69 KDa

Pyruvate Dehydrogenase E2 Antibody - Additional Information

Gene ID 1737

Other Names

70 kDa mitochondrial autoantigen of primary biliary cirrhosis;anti DLAT; Dihydrolipoamide acetyltransferase component of pyruvate dehydrogenase complex; Dihydrolipoamide;Dihydrolipoamide S Acetyltransferase;Dihydrolipoamide S-acetyltransferase (E2 component of pyruvate dehydrogenase complex);Dihydrolipoamide S-Acetyltransferase;Dihydrolipoyllysine-residue acetyltransferase component of pyruvate dehydrogenase complex;dihydrolipoyllysine-residue acetyltransferase component of pyruvate dehydrogenase complex mitochondrial;DLAT;DLAT;DLTA;E2;E2 component of pyruvate dehydrogenase complex;EC 2.3.1.12;M2 antigen complex 70 kDa subunit;M2 Antigen Complex 70kD Subunit;mitochondrial;ODP2_HUMAN;PBC;PDC E2;PDC-E2;PDCE2;Pyruvate dehydrogenase complex component E2;Pyruvate dehydrogenase complex E2 subunit;S acetyltransferase component of pyruvate dehydrogenase complex.

Dilution

IP~~1:500
WB~~1:1000
ICC~~1:300

Format

Purified mouse monoclonal in buffer containing 0.1M Tris-Glycine (pH 7.4, 150 mM NaCl) with 0.09% (W/V) sodium azide, 50%,glycerol

Storage

Store at -20 °C.Stable for 12 months from date of receipt

Pyruvate Dehydrogenase E2 Antibody - Protein Information

Name DLAT ([HGNC:2896](#))

Synonyms DLTA

Function

As part of the pyruvate dehydrogenase complex, catalyzes the transfers of an acetyl group to a lipoic acid moiety (Probable). The pyruvate dehydrogenase complex, catalyzes the overall conversion of pyruvate to acetyl-CoA and CO(2), and thereby links cytoplasmic glycolysis and the mitochondrial tricarboxylic acid (TCA) cycle (Probable).

Cellular Location

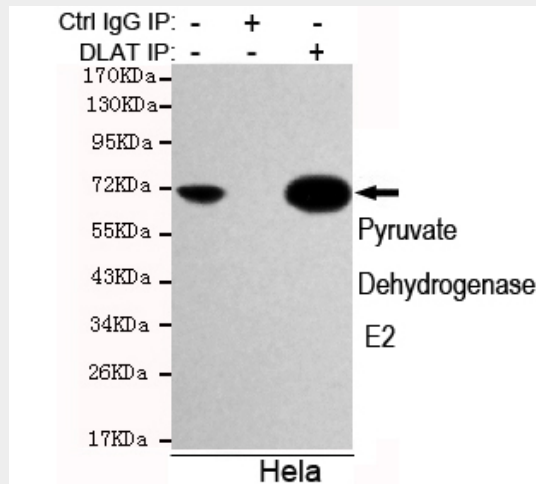
Mitochondrion matrix {ECO:0000250|UniProtKB:P08461}

Pyruvate Dehydrogenase E2 Antibody - Protocols

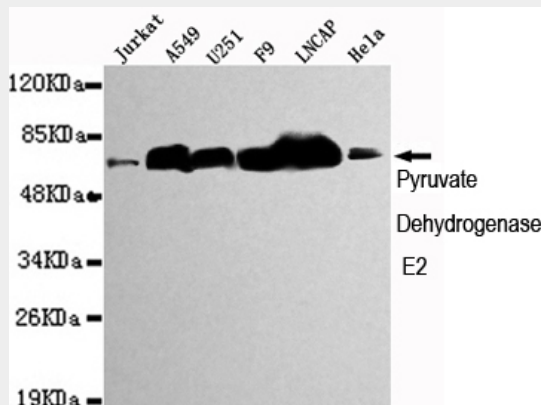
Provided below are standard protocols that you may find useful for product applications.

- [Western Blot](#)
- [Blocking Peptides](#)
- [Dot Blot](#)
- [Immunohistochemistry](#)
- [Immunofluorescence](#)
- [Immunoprecipitation](#)
- [Flow Cytometry](#)
- [Cell Culture](#)

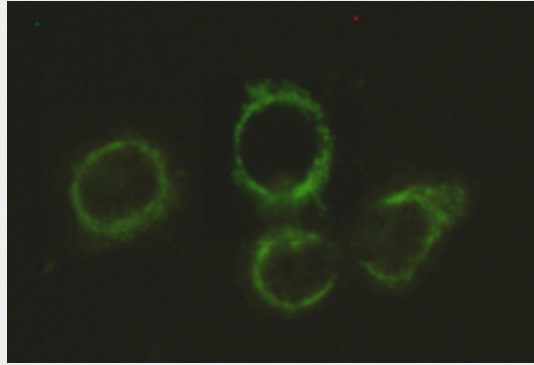
Pyruvate Dehydrogenase E2 Antibody - Images



Immunoprecipitation analysis of HeLa cell lysates using Pyruvate Dehydrogenase E2 mouse mAb.



Western blot detection of Pyruvate Dehydrogenase E2 in Jurkat,A549,U251,F9,Lncap and Hela cell lysates using Pyruvate Dehydrogenase E2 mouse mAb (1:1000 diluted).Predicted band size:69KDa.Observed band size:69KDa.



Immunocytochemistry stain of Hela using Pyruvate Dehydrogenase E2 mouse mAb (1:300).

Pyruvate Dehydrogenase E2 Antibody - Background

The pyruvate dehydrogenase complex catalyzes the overall conversion of pyruvate to acetyl-CoA and CO₂, and thereby links the glycolytic pathway to the tricarboxylic cycle.

Pyruvate Dehydrogenase E2 Antibody - References

Totoki Y.,et al.Submitted (APR-2005) to the EMBL/GenBank/DDBJ databases.
Taylor T.D.,et al.Nature 440:497-500(2006).
Coppel R.L.,et al.Proc. Natl. Acad. Sci. U.S.A. 85:7317-7321(1988).
Thekkumkara T.J.,et al.FEBS Lett. 240:45-48(1988).
Hiromasa Y.,et al.J. Biol. Chem. 279:6921-6933(2004).