

**Beclin 1 Antibody**  
**Purified Mouse Monoclonal Antibody (Mab)**  
**Catalog # AP52755**

**Specification**

---

**Beclin 1 Antibody - Product Information**

Application	<b>WB</b>
Primary Accession	<a href="#">O14457</a>
Reactivity	<b>Human, Mouse</b>
Host	<b>Mouse</b>
Clonality	<b>Monoclonal</b>
Isotype	<b>IgG1</b>
Calculated MW	<b>55 KDa</b>

**Beclin 1 Antibody - Additional Information**

**Gene ID** 8678

**Other Names**

APG6;ATG 6;ATG6;ATG6 autophagy related 6 homolog;Bcl-2-interacting protein beclin;Beclin 1 (coiled coil moesin like BCL2 interacting protein);Beclin 1 autophagy related;Beclin-1;Beclin1;BECN 1;BECN1;BECN1\_HUMAN;Coiled coil myosin like BCL2 interacting protein; Coiled-coil myosin-like BCL2-interacting protein;GT197;Protein GT197;VPS 30;VPS30.

**Dilution**

WB~~1:1000

**Format**

Purified mouse monoclonal in buffer containing 0.1M Tris-Glycine (pH 7.4, 150 mM NaCl) with 0.09% (W/V) sodium azide, 50%,glycerol

**Storage**

Store at -20 °C.Stable for 12 months from date of receipt

**Beclin 1 Antibody - Protein Information**

**Name** BECN1

**Synonyms** GT197

**Function**

Plays a central role in autophagy (PubMed: <a href="http://www.uniprot.org/citations/18570871" target="\_blank">18570871</a>, PubMed: <a href="http://www.uniprot.org/citations/21358617" target="\_blank">21358617</a>, PubMed: <a href="http://www.uniprot.org/citations/23184933" target="\_blank">23184933</a>, PubMed: <a href="http://www.uniprot.org/citations/23974797" target="\_blank">23974797</a>, PubMed: <a href="http://www.uniprot.org/citations/25484083" target="\_blank">25484083</a>, PubMed: <a href="http://www.uniprot.org/citations/28445460" target="\_blank">28445460</a>, PubMed: <a href="http://www.uniprot.org/citations/37776275" target="\_blank">37776275</a>

target="\_blank">37776275</a>). Acts as a core subunit of the PI3K complex that mediates formation of phosphatidylinositol 3-phosphate; different complex forms are believed to play a role in multiple membrane trafficking pathways: PI3KC3-C1 is involved in initiation of autophagosomes and PI3KC3-C2 in maturation of autophagosomes and endocytosis. Involved in regulation of degradative endocytic trafficking and required for the abscission step in cytokinesis, probably in the context of PI3KC3-C2 (PubMed:<a href="http://www.uniprot.org/citations/20208530" target="\_blank">20208530</a>, PubMed:<a href="http://www.uniprot.org/citations/20643123" target="\_blank">20643123</a>, PubMed:<a href="http://www.uniprot.org/citations/23974797" target="\_blank">23974797</a>, PubMed:<a href="http://www.uniprot.org/citations/26783301" target="\_blank">26783301</a>). Essential for the formation of PI3KC3-C2 but not PI3KC3-C1 PI3K complex forms. Involved in endocytosis (PubMed:<a href="http://www.uniprot.org/citations/25275521" target="\_blank">25275521</a>). May play a role in antiviral host defense.

**Cellular Location**

Cytoplasm. Golgi apparatus, trans-Golgi network membrane; Peripheral membrane protein. Endosome membrane; Peripheral membrane protein. Endoplasmic reticulum membrane; Peripheral membrane protein. Mitochondrion membrane; Peripheral membrane protein. Endosome {ECO:0000250|UniProtKB:O88597} Cytoplasmic vesicle, autophagosome. Note=Interaction with ATG14 promotes translocation to autophagosomes. Expressed in dendrites and cell bodies of cerebellar Purkinje cells (By similarity) {ECO:0000250|UniProtKB:O88597, ECO:0000269|PubMed:19050071} [Beclin-1-C 37 kDa]: Mitochondrion {ECO:0000250|UniProtKB:O88597}

**Tissue Location**

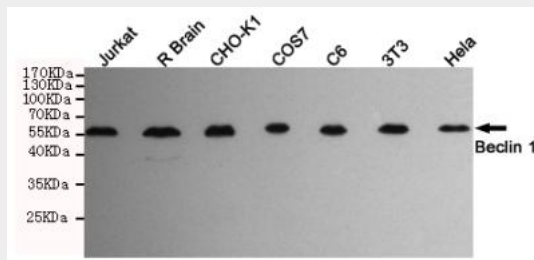
Ubiquitous.

**Beclin 1 Antibody - Protocols**

Provided below are standard protocols that you may find useful for product applications.

- [Western Blot](#)
- [Blocking Peptides](#)
- [Dot Blot](#)
- [Immunohistochemistry](#)
- [Immunofluorescence](#)
- [Immunoprecipitation](#)
- [Flow Cytometry](#)
- [Cell Culture](#)

**Beclin 1 Antibody - Images**



Western blot detection of Beclin 1 in HeLa,3T3,C6,COS7,CHO-K1,Rat brain and Jurkat cell lysates using Beclin 1 mouse mAb (1:1000 diluted).Predicted band size:52KDa.Observed band size:55KDa.

### **Beclin 1 Antibody - Background**

Plays a central role in autophagy (PubMed:23184933). Required for the abscission step in cytokinesis (PubMed:20208530). Protects against infection by a neurovirulent strain of Sindbis virus (PubMed:9765397). May play a role in antiviral host defense.

### **Beclin 1 Antibody - References**

Liang X.H.,et al.J. Virol. 72:8586-8596(1998).  
Aita V.M.,et al.Genomics 59:59-65(1999).  
Ota T.,et al.Nat. Genet. 36:40-45(2004).  
Rommens J.M.,et al.Genomics 28:530-542(1995).  
Itakura E.,et al.Mol. Biol. Cell 19:5360-5372(2008).

### **Beclin 1 Antibody - Citations**

- [Loss of Concurrent Regulation of the Expression of BIF-1, BAX, and Beclin-1 in Primary and Metastatic Melanoma](#)
- [Inhibition of CRL-NEDD8 pathway as a new approach to enhance ATRA-induced differentiation of acute promyelocytic leukemia cells.](#)
- [Sphingosine Kinase 1 Protects Renal Tubular epithelial cells from Renal Fibrosis via Induction of Autophagy.](#)