

**Aldehyde dehydrogenase 10 Antibody**  
**Purified Mouse Monoclonal Antibody (Mab)**  
**Catalog # AP52746**

## Specification

---

### Aldehyde dehydrogenase 10 Antibody - Product Information

Application	WB
Primary Accession	<a href="#">P51648</a>
Reactivity	Human
Host	Mouse
Clonality	Monoclonal
Isotype	IgG2a
Calculated MW	55 KDa

### Aldehyde dehydrogenase 10 Antibody - Additional Information

Gene ID 224

#### Other Names

Aldehyde dehydrogenase;Aldehyde dehydrogenase 10;Aldehyde dehydrogenase 3 family member A2;ALDH10;ALDH3A2;DKFZp686E23276;FALDH;Fatty aldehyde dehydrogenase;FLJ20851;Microsomal aldehyde dehydrogenase;OTTHUMP00000065799;OTTHUMP00000065800;OTTHUMP00000065801;SLS.

#### Dilution

WB~~1:1000

#### Format

Purified mouse monoclonal in buffer containing 0.1M Tris-Glycine (pH 7.4, 150 mM NaCl) with 0.09% (W/V) sodium azide, 50%,glycerol

#### Storage

Store at -20 °C.Stable for 12 months from date of receipt

### Aldehyde dehydrogenase 10 Antibody - Protein Information

Name ALDH3A2

#### Function

Catalyzes the oxidation of medium and long chain aliphatic aldehydes to fatty acids. Active on a variety of saturated and unsaturated aliphatic aldehydes between 6 and 24 carbons in length (PubMed:<a href="http://www.uniprot.org/citations/18035827" target="\_blank">18035827</a>, PubMed:<a href="http://www.uniprot.org/citations/18182499" target="\_blank">18182499</a>, PubMed:<a href="http://www.uniprot.org/citations/22633490" target="\_blank">22633490</a>, PubMed:<a href="http://www.uniprot.org/citations/25047030" target="\_blank">25047030</a>, PubMed:<a href="http://www.uniprot.org/citations/9133646" target="\_blank">9133646</a>, PubMed:<a href="http://www.uniprot.org/citations/9662422" target="\_blank">9662422</a>). Responsible for conversion of the sphingosine 1-phosphate (S1P) degradation product

hexadecenal to hexadecenoic acid (PubMed:<a href="http://www.uniprot.org/citations/22633490" target="\_blank">22633490</a>).

#### Cellular Location

Microsome membrane; Single-pass membrane protein. Endoplasmic reticulum membrane; Single-pass membrane protein; Cytoplasmic side {ECO:0000250|UniProtKB:P30839}

#### Tissue Location

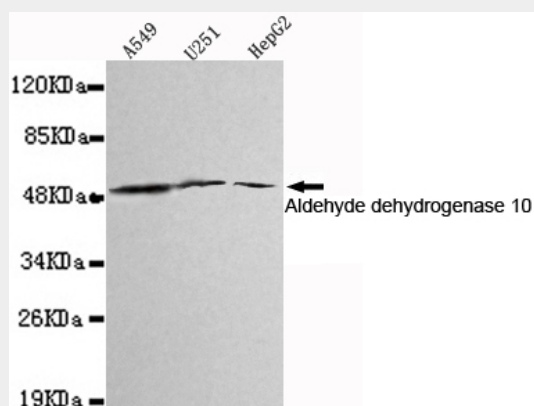
Detected in liver (at protein level).

### Aldehyde dehydrogenase 10 Antibody - Protocols

Provided below are standard protocols that you may find useful for product applications.

- [Western Blot](#)
- [Blocking Peptides](#)
- [Dot Blot](#)
- [Immunohistochemistry](#)
- [Immunofluorescence](#)
- [Immunoprecipitation](#)
- [Flow Cytometry](#)
- [Cell Culture](#)

### Aldehyde dehydrogenase 10 Antibody - Images



Western blot detection of Aldehyde dehydrogenase 10 in A549,U251 and HepG2 cell lysates using Aldehyde dehydrogenase 10 mouse mAb (1:1000 diluted). Predicted band size:55KDa.Observed band size:55KDa.

### Aldehyde dehydrogenase 10 Antibody - Background

Catalyzes the oxidation of long-chain aliphatic aldehydes to fatty acids. Active on a variety of saturated and unsaturated aliphatic aldehydes between 6 and 24 carbons in length. Responsible for conversion of the sphingosine 1-phosphate (S1P) degradation product hexadecenal to hexadecenoic acid.

### Aldehyde dehydrogenase 10 Antibody - References

de Laurenzi V.,et al.Nat. Genet. 12:52-57(1996).  
Rogers G.R.,et al.Genomics 39:127-135(1997).  
Chang C.,et al.Genomics 40:80-85(1997).

Ota T.,et al.Nat. Genet. 36:40-45(2004).

Ebert L.,et al.Submitted (JUN-2004) to the EMBL/GenBank/DDBJ databases.