

beta Tubulin Antibody
Purified Mouse Monoclonal Antibody (Mab)
Catalog # AP52742

Specification

beta Tubulin Antibody - Product Information

Application	WB, ICC
Primary Accession	P07437
Reactivity	Human, Mouse, Neisseria Gonorrhoeae
Host	Mouse
Clonality	Monoclonal
Isotype	IgG1
Calculated MW	55 KDa

beta Tubulin Antibody - Additional Information

Gene ID 203068

Other Names

beta 4 tubulin;Beta 5 tubulin;beta 1b tubulin;M40;TUBB1;TUBB5;tubulin beta 1 chain; Tubulin beta 4 chain;tubulin beta 5 chain;Tubulin beta;Tubulin beta chain;tubulin beta polypeptide.

Dilution

WB~~1:5000

ICC~~1:500

Format

Purified mouse monoclonal in PBS(pH 7.4) containing with 0.09% (W/V) sodium azide,0.1mg/mlBSA and 50% glycerol.

Storage

Store at -20 °C.Stable for 12 months from date of receipt

beta Tubulin Antibody - Protein Information

Name TUBB

Synonyms TUBB5

Function

Tubulin is the major constituent of microtubules, a cylinder consisting of laterally associated linear protofilaments composed of alpha- and beta-tubulin heterodimers. Microtubules grow by the addition of GTP-tubulin dimers to the microtubule end, where a stabilizing cap forms. Below the cap, tubulin dimers are in GDP-bound state, owing to GTPase activity of alpha-tubulin.

Cellular Location

Cytoplasm, cytoskeleton

Tissue Location

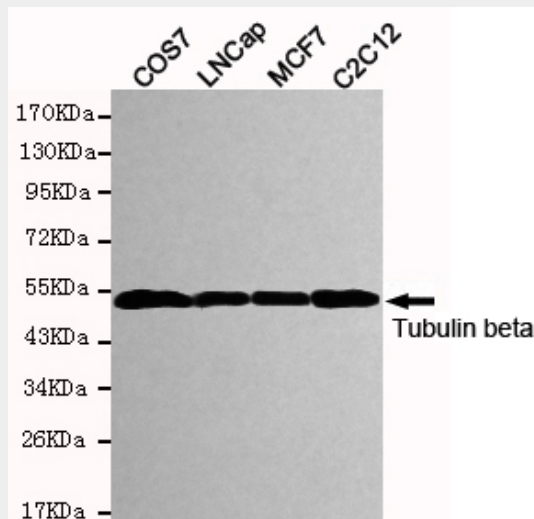
Ubiquitously expressed with highest levels in spleen, thymus and immature brain.

beta Tubulin Antibody - Protocols

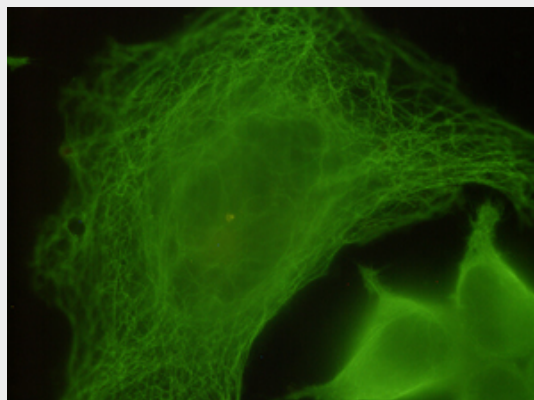
Provided below are standard protocols that you may find useful for product applications.

- [Western Blot](#)
- [Blocking Peptides](#)
- [Dot Blot](#)
- [Immunohistochemistry](#)
- [Immunofluorescence](#)
- [Immunoprecipitation](#)
- [Flow Cytometry](#)
- [Cell Culture](#)

beta Tubulin Antibody - Images



Western blot detection of Tubulin beta in COS7,LNCap,MCF7 and C2C12 cell lysates and using Tubulin beta mouse mAb (1:5000 diluted).Predicted band size: 55KDa.Observed band size: 55KDa.



Immunocytochemistry staining of HeLa cells fixed with 4% paraformaldehyde and using anti-Tubulin beta mouse mAb (dilution 1:500).

beta Tubulin Antibody - Background

Tubulin is the major constituent of microtubules. It binds two moles of GTP, one at an exchangeable site on the beta chain and one at a non-exchangeable site on the alpha chain.

beta Tubulin Antibody - References

Lee M.G.-S.,et al.Cell 33:477-487(1983).

Hall J.L.,et al.Mol. Cell. Biol. 3:854-862(1983).

Crabtree D.V.,et al.Bioorg. Med. Chem. 9:1967-1976(2001).

Yu W.,et al.Submitted (JUN-1998) to the EMBL/GenBank/DDBJ databases.

Shiina S.,et al.Submitted (SEP-1999) to the EMBL/GenBank/DDBJ databases.