

**B Raf Antibody**  
**Purified Mouse Monoclonal Antibody (Mab)**  
**Catalog # AP52718****Specification**

---

**B Raf Antibody - Product Information**

Application	<b>WB</b>
Primary Accession	<a href="#">P15056</a>
Reactivity	<b>Human</b>
Host	<b>Mouse</b>
Clonality	<b>Monoclonal</b>
Isotype	<b>IgG2a</b>
Calculated MW	<b>87 KDa</b>

**B Raf Antibody - Additional Information****Gene ID** 673**Other Names**

FLJ95109;94 kDa B raf protein;B raf 1;B Raf proto oncogene serine threonine protein kinase;B-Raf proto-oncogene serine/threonine-protein kinase (p94);BRAF 1;BRAF;BRAF\_HUMAN;BRAF1;cRmil;MGC126806;MGC138284;Murine sarcoma viral (v-raf) oncogene homolog B1;Murine sarcoma viral v raf oncogene homolog B1;NS7;oncogene BRAF1;p94;Proto-oncogene B-Raf;Proto-oncogene c-Rmil;RAFB 1;RAFB1;RMIL;Serine/threonine-protein kinase B-raf;v raf murine sarcoma viral oncogene homolog B;v raf murine sarcoma viral oncogene homolog B1;v-Raf murine sarcoma viral oncogene homolog B1

**Dilution**

WB~~1:1000

**Format**

Purified mouse monoclonal antibody in PBS(pH 7.4) containing with 0.09% (W/V) sodium azide and 50% glycerol.

**Storage**

Store at -20 °C.Stable for 12 months from date of receipt

**B Raf Antibody - Protein Information****Name** BRAF ([HGNC:1097](#))**Synonyms** BRAF1, RAFB1**Function**

Protein kinase involved in the transduction of mitogenic signals from the cell membrane to the nucleus (Probable). Phosphorylates MAP2K1, and thereby activates the MAP kinase signal transduction pathway (PubMed:&lt;a href="http://www.uniprot.org/citations/21441910"&gt;

target="\_blank">21441910</a>, PubMed:<a href="http://www.uniprot.org/citations/29433126" target="\_blank">29433126</a>). Phosphorylates PFKFB2 (PubMed:<a href="http://www.uniprot.org/citations/36402789" target="\_blank">36402789</a>). May play a role in the postsynaptic responses of hippocampal neurons (PubMed:<a href="http://www.uniprot.org/citations/1508179" target="\_blank">1508179</a>).

#### Cellular Location

Nucleus. Cytoplasm. Cell membrane. Note=Colocalizes with RGS14 and RAF1 in both the cytoplasm and membranes.

#### Tissue Location

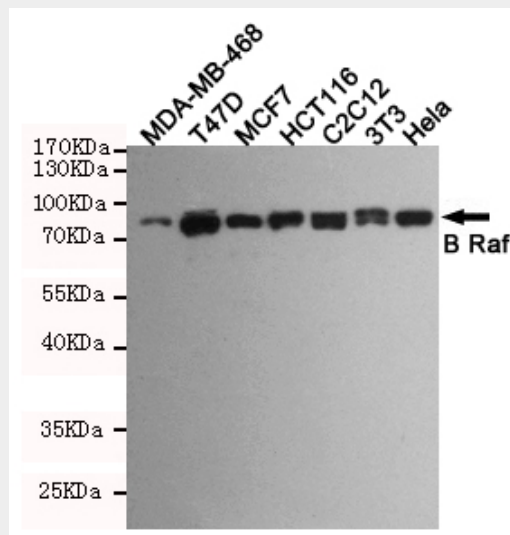
Brain and testis.

### B Raf Antibody - Protocols

Provided below are standard protocols that you may find useful for product applications.

- [Western Blot](#)
- [Blocking Peptides](#)
- [Dot Blot](#)
- [Immunohistochemistry](#)
- [Immunofluorescence](#)
- [Immunoprecipitation](#)
- [Flow Cytometry](#)
- [Cell Culture](#)

### B Raf Antibody - Images



Western blot detection of B Raf in MDA-MB-468,T47D,MCF7,HCT116,C2C12,3T3 and HeLa cell lysates using B Raf mouse mAb (1:1000 diluted).Predicted band size:87KDa.Observed band size:87KDa.

### B Raf Antibody - Background

Protein kinase involved in the transduction of mitogenic signals from the cell membrane to the nucleus. May play a role in the postsynaptic responses of hippocampal neuron. Phosphorylates MAP2K1, and thereby contributes to the MAP kinase signal transduction pathway.

**B Raf Antibody - References**

- Stephens R.M., et al. Mol. Cell. Biol. 12:3733-3742(1992).  
Albert S., et al. Submitted (JAN-2004) to the EMBL/GenBank/DDBJ databases.  
Scherer S.W., et al. Science 300:767-772(2003).  
Hillier L.W., et al. Nature 424:157-164(2003).  
Eychene A., et al. Oncogene 7:1657-1660(1992).