

**Rab2 Antibody**  
**Purified Mouse Monoclonal Antibody (Mab)**  
**Catalog # AP52713**

**Specification**

---

**Rab2 Antibody - Product Information**

Application	<b>WB, ICC</b>
Primary Accession	<a href="#">P61019</a>
Reactivity	<b>Human</b>
Host	<b>Mouse</b>
Clonality	<b>Monoclonal</b>
Isotype	<b>IgG1</b>
Calculated MW	<b>24 KDa</b>

**Rab2 Antibody - Additional Information**

**Gene ID** 5862

**Other Names**

9330148M11Rik;C80220;GTP binding protein;LHX;OTTMUSP00000004796;RAB2;RAB2 member RAS oncogene family;RAB2A;RAB2A, member RAS oncogene family;RAB2A\_HUMAN;Ras related protein Rab 2A;RAS-associated protein RAB2;Ras-related protein Rab-2A;RP23-183L6.1;Small GTP binding protein RAB2A.

**Dilution**

WB~~1:1000  
ICC~~1:200

**Format**

Ascites containing 0.09% (W/V) NaN3 & 50% glycerol

**Storage**

Store at -20 °C.Stable for 12 months from date of receipt

**Rab2 Antibody - Protein Information**

**Name** RAB2A ([HGNC:9763](#))

**Synonyms** RAB2

**Function**

The small GTPases Rab are key regulators of intracellular membrane trafficking, from the formation of transport vesicles to their fusion with membranes. Rabs cycle between active GTP-bound and inactive GDP-bound states. In their active state, drive transport of vesicular carriers from donor organelles to acceptor organelles to regulate the membrane traffic that maintains organelle identity and morphology. Required for protein transport from the endoplasmic reticulum to the Golgi complex. Regulates the compacted morphology of the Golgi (Probable). Together with RAB2B redundantly required for efficient autophagic flux (PubMed:<a

href="http://www.uniprot.org/citations/28483915" target="\_blank">28483915</a>).

### Cellular Location

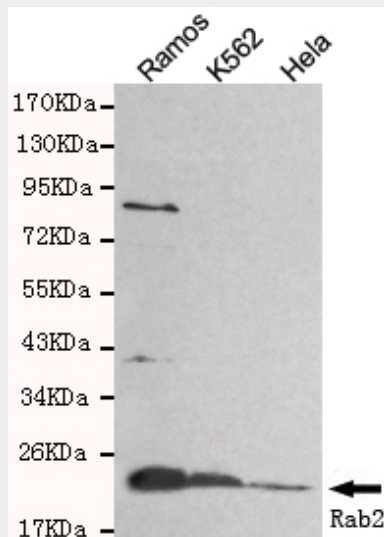
Endoplasmic reticulum-Golgi intermediate compartment membrane; Lipid-anchor; Cytoplasmic side Melanosome. Endoplasmic reticulum membrane; Lipid-anchor; Cytoplasmic side. Golgi apparatus membrane; Lipid-anchor; Cytoplasmic side. Cytoplasmic vesicle, secretory vesicle, acrosome {ECO:0000250|UniProtKB:P53994}. Cytoplasmic vesicle, autophagosome membrane {ECO:0000250|UniProtKB:P53994}; Lipid-anchor; Cytoplasmic side Note=Localized in the Golgi apparatus in the round spermatids and in the acrosome of the elongating spermatid (By similarity). Identified by mass spectrometry in melanosome fractions from stage I to stage IV (PubMed:17081065). {ECO:0000250|UniProtKB:P53994, ECO:0000269|PubMed:17081065}

### Rab2 Antibody - Protocols

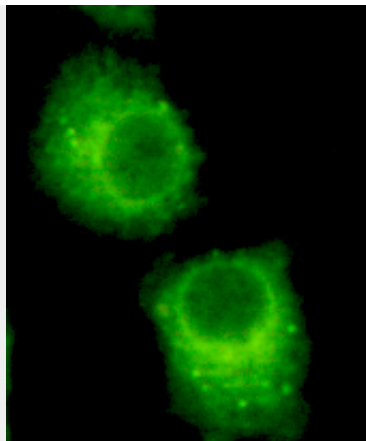
Provided below are standard protocols that you may find useful for product applications.

- [Western Blot](#)
- [Blocking Peptides](#)
- [Dot Blot](#)
- [Immunohistochemistry](#)
- [Immunofluorescence](#)
- [Immunoprecipitation](#)
- [Flow Cytometry](#)
- [Cell Culture](#)

### Rab2 Antibody - Images



Western blot detection of Rab2 in HeLa, Ramos and K562 cell lysates and using Rab2 mouse mAb (1:800 diluted). Predicted band size: 24KDa. Observed band size: 24KDa.



Immunocytochemistry of HeLa cells using anti-Rab2 mouse mAb diluted 1:200

### **Rab2 Antibody - Background**

Required for protein transport from the endoplasmic reticulum to the Golgi complex.

### **Rab2 Antibody - References**

- Tachibana K.,et al.Nucleic Acids Res. 16:10368-10368(1988).  
Zahraoui A.,et al.J. Biol. Chem. 264:12394-12401(1989).  
Puhl H.L. III,et al.Submitted (APR-2002) to the EMBL/GenBank/DDBJ databases.  
Kalnine N.,et al.Submitted (MAY-2003) to the EMBL/GenBank/DDBJ databases.  
Ota T.,et al.Nat. Genet. 36:40-45(2004).