

**Keratin 18 Antibody**  
**Purified Mouse Monoclonal Antibody (Mab)**  
**Catalog # AP52707****Specification**

---

**Keratin 18 Antibody - Product Information**

Application	<b>WB, ICC</b>
Primary Accession	<a href="#">P05783</a>
Reactivity	<b>Human</b>
Host	<b>Mouse</b>
Clonality	<b>Monoclonal</b>
Isotype	<b>IgG2a</b>
Calculated MW	<b>46 KDa</b>

**Keratin 18 Antibody - Additional Information****Gene ID** 3875**Other Names**

Cell proliferation inducing gene 46 protein;Cell proliferation inducing protein 46;Cell proliferation-inducing gene 46 protein;CK 18;CK-18;CK18;Cytokeratin 18;Cytokeratin endo B;Cytokeratin-18;Cytokeratin18;K 18;K18;K1C18\_HUMAN;Keratin 18;Keratin D;Keratin type I cytoskeletal 18;keratin, type I cytoskeletal 18;Keratin-18;Keratin18;Kerd;KRT18.

**Dilution**

WB~~1:2000

ICC~~1:800

**Format**

Purified mouse monoclonal in PBS(pH 7.4) containing with 0.09% (W/V) sodium azide,0.1mg/mlBSA and 50% glycerol.

**Storage**

Store at -20 °C.Stable for 12 months from date of receipt

**Keratin 18 Antibody - Protein Information****Name** KRT18**Synonyms** CYK18**Function**

Involved in the uptake of thrombin-antithrombin complexes by hepatic cells (By similarity). When phosphorylated, plays a role in filament reorganization. Involved in the delivery of mutated CFTR to the plasma membrane. Together with KRT8, is involved in interleukin-6 (IL-6)-mediated barrier protection.

**Cellular Location**

Nucleus matrix {ECO:0000250|UniProtKB:Q5BJY9}. Cytoplasm, perinuclear region. Nucleus, nucleolus. Cytoplasm {ECO:0000250|UniProtKB:Q5BJY9}

#### Tissue Location

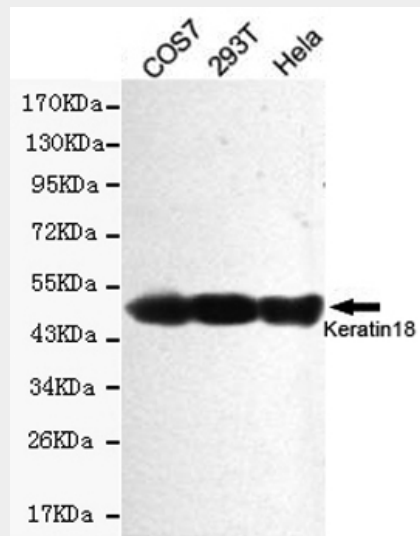
Expressed in colon, placenta, liver and very weakly in exocervix. Increased expression observed in lymph nodes of breast carcinoma.

#### Keratin 18 Antibody - Protocols

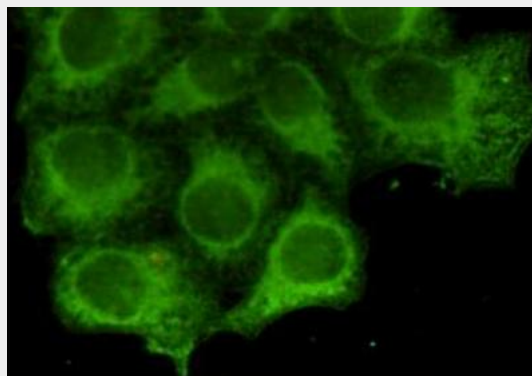
Provided below are standard protocols that you may find useful for product applications.

- [Western Blot](#)
- [Blocking Peptides](#)
- [Dot Blot](#)
- [Immunohistochemistry](#)
- [Immunofluorescence](#)
- [Immunoprecipitation](#)
- [Flow Cytometry](#)
- [Cell Culture](#)

#### Keratin 18 Antibody - Images



Western blot detection of Keratin 18 in HeLa, COS7 and 293T cell lysates using Keratin 18 mouse mAb (1:2000 diluted). Predicted band size: 46 kDa. Observed band size: 46 kDa.



Immunocytochemistry staining of HeLa cells fixed by anhydrous methanol for 2 h at -20°C and using anti-Keratin 18 mouse mAb (dilution 1:800).

### **Keratin 18 Antibody - Background**

Involved in the uptake of thrombin-antithrombin complexes by hepatic cells (By similarity). When phosphorylated, plays a role in filament reorganization. Involved in the delivery of mutated CFTR to the plasma membrane. Together with KRT8, is involved in interleukin-6 (IL-6)-mediated barrier protection.

### **Keratin 18 Antibody - References**

- Oshima R.G.,et al.Differentiation 33:61-68(1986).
- Kim J.W.,et al.Submitted (SEP-2004) to the EMBL/GenBank/DDBJ databases.
- Kalnina N.,et al.Submitted (OCT-2004) to the EMBL/GenBank/DDBJ databases.
- Suzuki Y.,et al.Submitted (APR-2005) to the EMBL/GenBank/DDBJ databases.
- Kulesh D.A.,et al.Mol. Cell. Biol. 8:1540-1550(1988).