

PP2A alpha and beta Antibody
Purified Mouse Monoclonal Antibody (Mab)
Catalog # AP52702

Specification

PP2A alpha and beta Antibody - Product Information

Application	IP, WB
Primary Accession	P62714
Reactivity	Human, Mouse
Host	Mouse
Clonality	Monoclonal
Isotype	IgG2a
Calculated MW	36 KDa

PP2A alpha and beta Antibody - Additional Information

Gene ID 5516

Other Names

PP2A beta;PP2A-beta;PP2AB_HUMAN;PP2Abeta;PP2CB;Ppp2cb;Protein phosphatase 2 (formerly 2A), catalytic subunit, beta isoform;Protein phosphatase 2 catalytic subunit beta isozyme;Protein phosphatase 2, catalytic subunit, beta isoform;Protein phosphatase 2A catalytic subunit beta isoform;Protein phosphatase type 2A catalytic subunit;Serine/threonine protein phosphatase 2A catalytic subunit beta;Serine/threonine-protein phosphatase 2A catalytic subunit beta isoform.

Dilution

IP~~1:500
WB~~1:2000

Format

Purified mouse monoclonal in buffer containing 0.1M Tris-Glycine (pH 7.4, 150 mM NaCl) with 0.09% (W/V) sodium azide,50% glycerol.

Storage

Store at -20 °C.Stable for 12 months from date of receipt

PP2A alpha and beta Antibody - Protein Information

Name PPP2CB ([HGNC:9300](#))

Function

Catalytic subunit of protein phosphatase 2A (PP2A), a serine/threonine phosphatase involved in the regulation of a wide variety of enzymes, signal transduction pathways, and cellular events (Probable). PP2A can modulate the activity of phosphorylase B kinase, casein kinase 2, mitogen-stimulated S6 kinase, and MAP-2 kinase. Part of the striatin-interacting phosphatase and kinase (STRIPAK) complexes. STRIPAK complexes have critical roles in protein (de)phosphorylation and are regulators of multiple signaling pathways including Hippo, MAPK, nuclear receptor and cytoskeleton remodeling. Different types of STRIPAK complexes are involved in a variety of

biological processes such as cell growth, differentiation, apoptosis, metabolism and immune regulation (PubMed:18782753).

Cellular Location

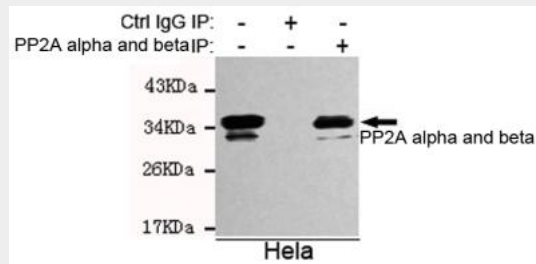
Cytoplasm. Nucleus. Chromosome, centromere. Cytoplasm, cytoskeleton, spindle pole. Note=In prometaphase cells, but not in anaphase cells, localizes at centromeres. During mitosis, also found at spindle poles

PP2A alpha and beta Antibody - Protocols

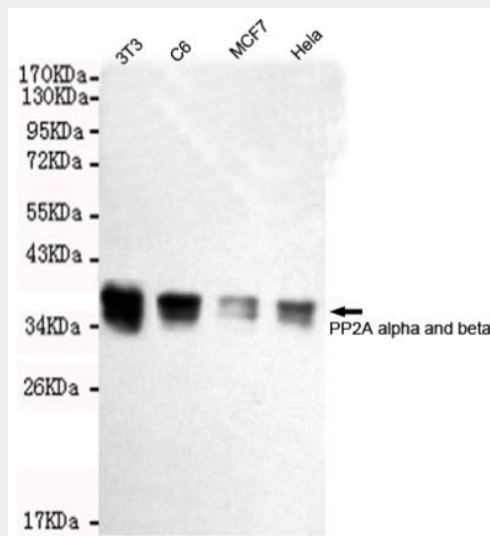
Provided below are standard protocols that you may find useful for product applications.

- [Western Blot](#)
- [Blocking Peptides](#)
- [Dot Blot](#)
- [Immunohistochemistry](#)
- [Immunofluorescence](#)
- [Immunoprecipitation](#)
- [Flow Cytometry](#)
- [Cell Culture](#)

PP2A alpha and beta Antibody - Images



Immunoprecipitation analysis of HeLa cell lysates using PP2A alpha and beta mouse mAb.



Western blot detection of PP2A alpha and beta in HeLa, MCF7, C6 and 3T3 cell lysates using PP2A alpha and beta mouse mAb (1:2000 diluted). Predicted band size: 36KDa. Observed band

size:36KDa.

PP2A alpha and beta Antibody - Background

PP2A can modulate the activity of phosphorylase B kinase casein kinase 2, mitogen-stimulated S6 kinase, and MAP-2 kinase.

PP2A alpha and beta Antibody - References

Hemmings B.A.,et al.Nucleic Acids Res. 16:11366-11366(1988).
Ebert L.,et al.Submitted (JUN-2004) to the EMBL/GenBank/DDBJ databases.
Mural R.J.,et al.Submitted (SEP-2005) to the EMBL/GenBank/DDBJ databases.
Arino J.,et al.Proc. Natl. Acad. Sci. U.S.A. 85:4252-4256(1988).
Khew-Goodall Y.,et al.Biochemistry 30:89-97(1991).