

TAL-1 (Phospho-Ser122) Antibody
Purified Rabbit Polyclonal Antibody (Pab)
Catalog # AP52604

Specification

TAL-1 (Phospho-Ser122) Antibody - Product Information

Application	WB
Primary Accession	P17542
Host	Rabbit
Clonality	Polyclonal
Calculated MW	34271

TAL-1 (Phospho-Ser122) Antibody - Additional Information

Gene ID 6886

Other Names

T-cell acute lymphocytic leukemia protein 1, TAL-1, Class A basic helix-loop-helix protein 17, BHLHa17, Stem cell protein, T-cell leukemia/lymphoma protein 5, TAL1, BHLHA17, SCL, TCL5

Dilution

WB~~1:1000

Format

Rabbit IgG in phosphate buffered saline (without Mg²⁺ and Ca²⁺), pH 7.4, 150mM NaCl, 0.09% (W/V) sodium azide and 50% glycerol.

Storage Conditions

-20°C

TAL-1 (Phospho-Ser122) Antibody - Protein Information

Name TAL1

Synonyms BHLHA17, SCL, TCL5

Function

Implicated in the genesis of hemopoietic malignancies. It may play an important role in hemopoietic differentiation. Serves as a positive regulator of erythroid differentiation (By similarity).

Cellular Location

Nucleus {ECO:0000255|PROSITE-ProRule:PRU00981}.

Tissue Location

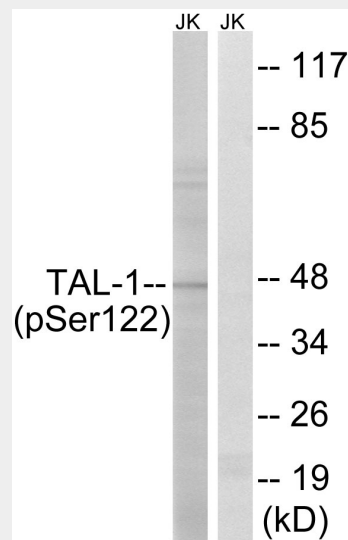
Leukemic stem cell.

TAL-1 (Phospho-Ser122) Antibody - Protocols

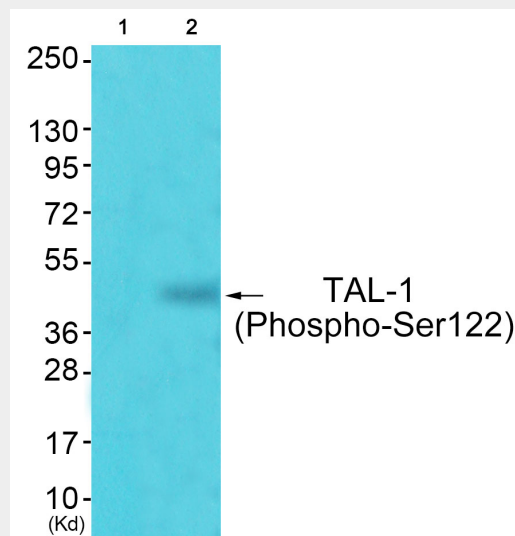
Provided below are standard protocols that you may find useful for product applications.

- [Western Blot](#)
- [Blocking Peptides](#)
- [Dot Blot](#)
- [Immunohistochemistry](#)
- [Immunofluorescence](#)
- [Immunoprecipitation](#)
- [Flow Cytometry](#)
- [Cell Culture](#)

TAL-1 (Phospho-Ser122) Antibody - Images



Western blot analysis of extracts from Jurkat cells, treated with PMA (125 ng/ml, 30mins), using TAL-1 (Phospho-Ser122) antibody.



Western blot analysis of extracts from JK cells (Lane 2), using TAL-1 (Phospho-Ser122) Antibody. The lane on the left is treated with synthesized peptide.

TAL-1 (Phospho-Ser122) Antibody - Background

Implicated in the genesis of hemopoietic malignancies. It may play an important role in hemopoietic differentiation. Serves as a positive regulator of erythroid differentiation (By similarity).

TAL-1 (Phospho-Ser122) Antibody - References

Aplan P.D.,et al.Mol. Cell. Biol. 10:6426-6435(1990).

Gregory S.G.,et al.Nature 441:315-321(2006).

Mural R.J.,et al.Submitted (SEP-2005) to the EMBL/GenBank/DDBJ databases.

Chen Q.,et al.J. Exp. Med. 172:1403-1408(1990).

Begley C.G.,et al.Proc. Natl. Acad. Sci. U.S.A. 86:10128-10132(1989).