

CtBP1 (Phospho-Ser422) Antibody
Purified Rabbit Polyclonal Antibody (Pab)
Catalog # AP52580

Specification

CtBP1 (Phospho-Ser422) Antibody - Product Information

| | |
|-------------------|------------------------|
| Application | WB, IHC |
| Primary Accession | Q13363 |
| Host | Rabbit |
| Clonality | Polyclonal |
| Calculated MW | 47535 |

CtBP1 (Phospho-Ser422) Antibody - Additional Information

Gene ID 1487

Other Names

C-terminal-binding protein 1, CtBP1, 111-, CTBP1, CTBP

Dilution

WB~~1:1000
IHC~~1:50~100

Format

Rabbit IgG in phosphate buffered saline (without Mg²⁺ and Ca²⁺), pH 7.4, 150mM NaCl, 0.09% (W/V) sodium azide and 50% glycerol.

Storage Conditions

-20°C

CtBP1 (Phospho-Ser422) Antibody - Protein Information

Name CTBP1

Synonyms CTBP

Function

Corepressor targeting diverse transcription regulators such as GLIS2 or BCL6. Has dehydrogenase activity. Involved in controlling the equilibrium between tubular and stacked structures in the Golgi complex. Functions in brown adipose tissue (BAT) differentiation.

Cellular Location

Cytoplasm. Nucleus

Tissue Location

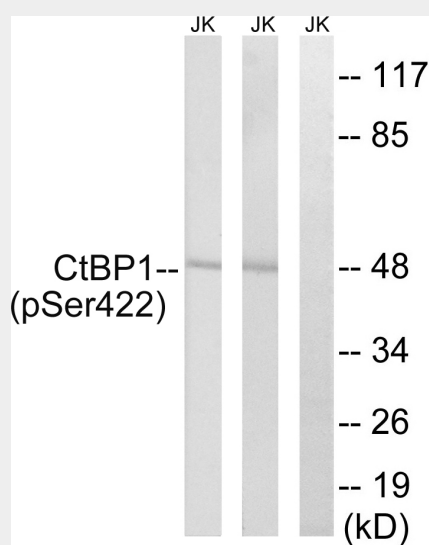
Expressed in germinal center B-cells.

CtBP1 (Phospho-Ser422) Antibody - Protocols

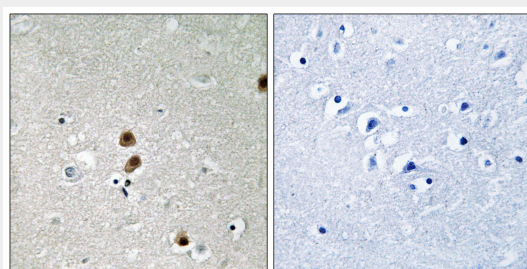
Provided below are standard protocols that you may find useful for product applications.

- [Western Blot](#)
- [Blocking Peptides](#)
- [Dot Blot](#)
- [Immunohistochemistry](#)
- [Immunofluorescence](#)
- [Immunoprecipitation](#)
- [Flow Cytometry](#)
- [Cell Culture](#)

CtBP1 (Phospho-Ser422) Antibody - Images



Western blot analysis of extracts from Jurkat cells, treated with TNF (20ng/ml, 30mins), using CtBP1 (Phospho-Ser422) antibody.



Immunohistochemistry analysis of paraffin-embedded human brain tissue, using CtBP1 (Phospho-Ser422) antibody.

CtBP1 (Phospho-Ser422) Antibody - Background

Corepressor targeting diverse transcription regulators such as GLIS2 or BCL6. Has dehydrogenase activity. Involved in controlling the equilibrium between tubular and stacked structures in the Golgi complex. Functions in brown adipose tissue (BAT) differentiation.

CtBP1 (Phospho-Ser422) Antibody - References

Schaeper U., et al. Proc. Natl. Acad. Sci. U.S.A. 92:10467-10471(1995).

Sewalt R.G.A.B., et al. Mol. Cell. Biol. 19:777-787(1999).

Hillier L.W., et al. Nature 434:724-731(2005).

Mural R.J., et al. Submitted (SEP-2005) to the EMBL/GenBank/DDBJ databases.

Boyd J.M., et al. EMBO J. 12:469-478(1993).