

**GRB2-associated-binding protein 2 (Phospho-Ser159) Antibody**  
**Purified Rabbit Polyclonal Antibody (Pab)**  
**Catalog # AP52551**

**Specification**

---

**GRB2-associated-binding protein 2 (Phospho-Ser159) Antibody - Product Information**

Application	WB
Primary Accession	<a href="#">O9UQC2</a>
Reactivity	Human, Mouse, Rat
Host	Rabbit
Clonality	Polyclonal

**GRB2-associated-binding protein 2 (Phospho-Ser159) Antibody - Additional Information**

**Gene ID** 9846

**Other Names**

GRB2-associated-binding protein 2, GRB2-associated binder 2, Growth factor receptor bound protein 2-associated protein 2, pp100, GAB2, KIAA0571

**Dilution**

WB~~1:1000

**Format**

Rabbit IgG in phosphate buffered saline (without Mg<sup>2+</sup> and Ca<sup>2+</sup>), pH 7.4, 150mM NaCl, 0.09% (W/V) sodium azide and 50% glycerol.

**Storage Conditions**

-20°C

**GRB2-associated-binding protein 2 (Phospho-Ser159) Antibody - Protein Information**

**Name** GAB2

**Synonyms** KIAA0571

**Function**

Adapter protein which acts downstream of several membrane receptors including cytokine, antigen, hormone, cell matrix and growth factor receptors to regulate multiple signaling pathways. Regulates osteoclast differentiation mediating the TNFRSF11A/RANK signaling. In allergic response, it plays a role in mast cells activation and degranulation through PI-3-kinase regulation. Also involved in the regulation of cell proliferation and hematopoiesis.

**Cellular Location**

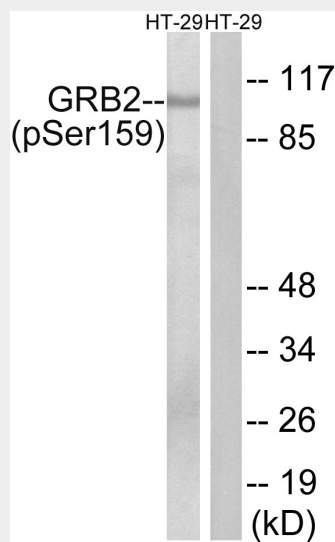
Cytoplasm. Cell membrane. Membrane raft {ECO:0000250|UniProtKB:Q9Z1S8}

## GRB2-associated-binding protein 2 (Phospho-Ser159) Antibody - Protocols

Provided below are standard protocols that you may find useful for product applications.

- [Western Blot](#)
- [Blocking Peptides](#)
- [Dot Blot](#)
- [Immunohistochemistry](#)
- [Immunofluorescence](#)
- [Immunoprecipitation](#)
- [Flow Cytometry](#)
- [Cell Culture](#)

## GRB2-associated-binding protein 2 (Phospho-Ser159) Antibody - Images



Western blot analysis of extracts from HT-29 cells, treated with serum (20%, 15mins), using GRB2-associated-binding protein 2 (Phospho-Ser159) antibody.

## GRB2-associated-binding protein 2 (Phospho-Ser159) Antibody - Background

Adapter protein which acts downstream of several membrane receptors including cytokine, antigen, hormone, cell matrix and growth factor receptors to regulate multiple signaling pathways. Regulates osteoclast differentiation mediating the TNFRSF11A/RANK signaling. In allergic response, it plays a role in mast cells activation and degranulation through PI-3-kinase regulation. Also involved in the regulation of cell proliferation and hematopoiesis.

## GRB2-associated-binding protein 2 (Phospho-Ser159) Antibody - References

- Nishida K., et al. *Blood* 93:1809-1816(1999).  
Nagase T., et al. *DNA Res.* 5:31-39(1998).  
Nagase T., et al. Submitted (JAN-2004) to the EMBL/GenBank/DDBJ databases.  
Taylor T.D., et al. *Nature* 440:497-500(2006).  
Mural R.J., et al. Submitted (JUL-2005) to the EMBL/GenBank/DDBJ databases.