

SF1 (Phospho-Ser82) Antibody
Purified Rabbit Polyclonal Antibody (Pab)
Catalog # AP52392

Specification

SF1 (Phospho-Ser82) Antibody - Product Information

Application	WB, IHC
Primary Accession	Q15637
Reactivity	Human, Mouse, Rat
Host	Rabbit
Clonality	Polyclonal
Calculated MW	68330

SF1 (Phospho-Ser82) Antibody - Additional Information

Gene ID 7536

Other Names

Splicing factor 1, Mammalian branch point-binding protein, BBP, mBBP, Transcription factor ZFM1, Zinc finger gene in MEN1 locus, Zinc finger protein 162, SF1, ZFM1, ZNF162

Dilution

WB~~1:1000
IHC~~1:50~100

Format

Rabbit IgG in phosphate buffered saline (without Mg²⁺ and Ca²⁺), pH 7.4, 150mM NaCl, 0.09% (W/V) sodium azide and 50% glycerol.

Storage Conditions

-20°C

SF1 (Phospho-Ser82) Antibody - Protein Information

Name SF1

Synonyms ZFM1, ZNF162

Function

Necessary for the ATP-dependent first step of spliceosome assembly. Binds to the intron branch point sequence (BPS) 5'-UACUAAC-3' of the pre-mRNA. May act as transcription repressor.

Cellular Location

Nucleus.

Tissue Location

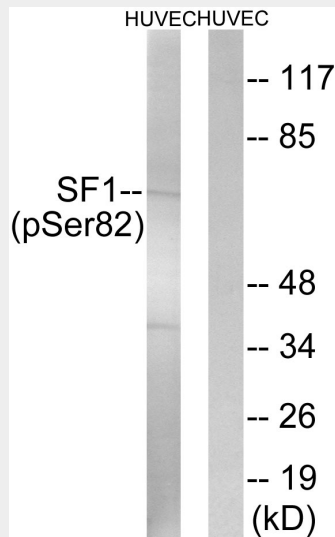
Detected in lung, ovary, adrenal gland, colon, kidney, muscle, pancreas, thyroid, placenta, brain, liver and heart

SF1 (Phospho-Ser82) Antibody - Protocols

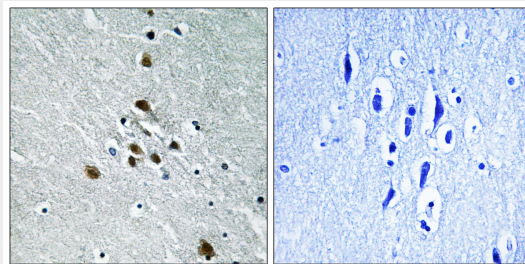
Provided below are standard protocols that you may find useful for product applications.

- [Western Blot](#)
- [Blocking Peptides](#)
- [Dot Blot](#)
- [Immunohistochemistry](#)
- [Immunofluorescence](#)
- [Immunoprecipitation](#)
- [Flow Cytometry](#)
- [Cell Culture](#)

SF1 (Phospho-Ser82) Antibody - Images



Western blot analysis of extracts from HUVEC cells, treated with anisomycin (25ug/ml, 30mins), using SF1 (Phospho-Ser82) antibody.



Immunohistochemistry analysis of paraffin-embedded human brain tissue using SF1 (Phospho-Ser82) antibody

SF1 (Phospho-Ser82) Antibody - Background

Necessary for the ATP-dependent first step of spliceosome assembly. Binds to the intron branch point sequence (BPS) 5'-UACU AAC-3' of the pre-mRNA. May act as transcription repressor.

SF1 (Phospho-Ser82) Antibody - References

Arning S.,et al.RNA 2:794-810(1996).
Caslini C.,et al.Genomics 42:268-277(1997).
Toda T.,et al.Hum. Mol. Genet. 3:465-470(1994).
Ota T.,et al.Nat. Genet. 36:40-45(2004).
Taylor T.D.,et al.Nature 440:497-500(2006).