

Cyclin D3 (Phospho-Thr283) Antibody
Purified Rabbit Polyclonal Antibody (Pab)
Catalog # AP52373

Specification

Cyclin D3 (Phospho-Thr283) Antibody - Product Information

Application	WB, IHC
Primary Accession	P30281
Reactivity	Human, Mouse, Rat
Host	Rabbit
Clonality	Polyclonal
Calculated MW	32520

Cyclin D3 (Phospho-Thr283) Antibody - Additional Information

Gene ID 896

Other Names

G1/S-specific cyclin-D3, CCND3

Dilution

WB~~1:1000

IHC~~1:50~100

Format

Rabbit IgG in phosphate buffered saline (without Mg²⁺ and Ca²⁺), pH 7.4, 150mM NaCl, 0.09% (W/V) sodium azide and 50% glycerol.

Storage Conditions

-20°C

Cyclin D3 (Phospho-Thr283) Antibody - Protein Information

Name CCND3 {ECO:0000303|PubMed:1386336, ECO:0000312|HGNC:HGNC:1585}

Function

Regulatory component of the cyclin D3-CDK4 (DC) complex that phosphorylates and inhibits members of the retinoblastoma (RB) protein family including RB1 and regulates the cell-cycle during G(1)/S transition (PubMed:8114739). Phosphorylation of RB1 allows dissociation of the transcription factor E2F from the RB/E2F complex and the subsequent transcription of E2F target genes which are responsible for the progression through the G(1) phase (PubMed:8114739). Hypophosphorylates RB1 in early G(1) phase (PubMed:8114739). Cyclin D- CDK4 complexes are major integrators of various mitogenic and antimitogenic signals (PubMed:8114739). Component of the ternary complex, cyclin D3/CDK4/CDKN1B, required for nuclear translocation and activity of

the cyclin D-CDK4 complex (PubMed:16782892). Shows transcriptional coactivator activity with ATF5 independently of CDK4 (PubMed:15358120).

Cellular Location

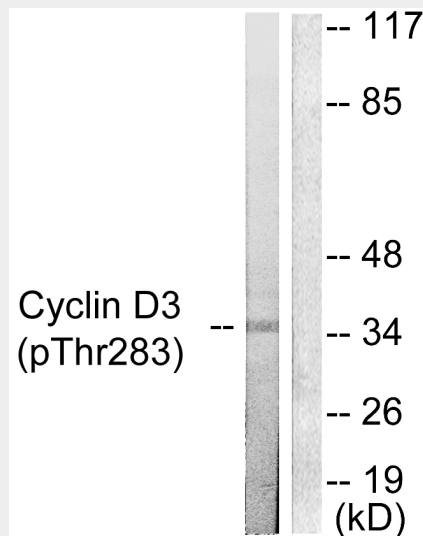
Nucleus. Cytoplasm

Cyclin D3 (Phospho-Thr283) Antibody - Protocols

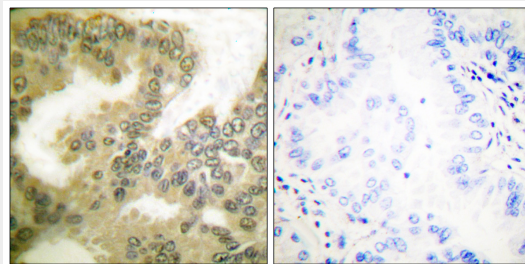
Provided below are standard protocols that you may find useful for product applications.

- [Western Blot](#)
- [Blocking Peptides](#)
- [Dot Blot](#)
- [Immunohistochemistry](#)
- [Immunofluorescence](#)
- [Immunoprecipitation](#)
- [Flow Cytometry](#)
- [Cell Culture](#)

Cyclin D3 (Phospho-Thr283) Antibody - Images



Western blot analysis of extracts from K562 cells treated with UV (5mins), using Cyclin D3 (Phospho-Thr283) Antibody (#A0418).



Immunohistochemical analysis of paraffin-embedded human lung carcinoma tissue using Cyclin D3 (Phospho-Thr283) Antibody (#A0418).

Cyclin D3 (Phospho-Thr283) Antibody - Background

Regulatory component of the cyclin D3-CDK4 (DC) complex that phosphorylates and inhibits members of the retinoblastoma (RB) protein family including RB1 and regulates the cell-cycle during G(1)/S transition. Phosphorylation of RB1 allows dissociation of the transcription factor E2F from the RB/E2F complex and the subsequent transcription of E2F target genes which are responsible for the progression through the G(1) phase. Hypophosphorylates RB1 in early G(1) phase. Cyclin D-CDK4 complexes are major integrators of various mitogenic and antimitogenic signals. Also substrate for SMAD3, phosphorylating SMAD3 in a cell-cycle-dependent manner and repressing its transcriptional activity. Component of the ternary complex, cyclin D3/CDK4/CDKN1B, required for nuclear translocation and activity of the cyclin D-CDK4 complex.

Cyclin D3 (Phospho-Thr283) Antibody - References

- Xiong Y.,et al.Genomics 13:575-584(1992).
- Motokura T.,et al.J. Biol. Chem. 267:20412-20415(1992).
- Li W.B.,et al.Submitted (APR-2003) to the EMBL/GenBank/DDBJ databases.
- Ota T.,et al.Nat. Genet. 36:40-45(2004).
- Ebert L.,et al.Submitted (JUN-2004) to the EMBL/GenBank/DDBJ databases.