

**STAT5B (Phospho-Ser731) Antibody**  
**Purified Rabbit Polyclonal Antibody (Pab)**  
**Catalog # AP52370**

### Specification

---

#### STAT5B (Phospho-Ser731) Antibody - Product Information

Application	<b>WB, IHC</b>
Primary Accession	<a href="#">P42229</a>
Other Accession	<a href="#">P51692</a>
Reactivity	<b>Human</b>
Host	<b>Rabbit</b>
Clonality	<b>Polyclonal</b>
Calculated MW	<b>90647</b>

#### STAT5B (Phospho-Ser731) Antibody - Additional Information

**Gene ID** 6776

#### Other Names

Signal transducer and activator of transcription 5A, STAT5A, STAT5

#### Dilution

WB~~1:1000  
IHC~~1:50~100

#### Format

Rabbit IgG in phosphate buffered saline (without Mg<sup>2+</sup> and Ca<sup>2+</sup>), pH 7.4, 150mM NaCl, 0.09% (W/V) sodium azide and 50% glycerol.

#### Storage Conditions

-20°C

#### STAT5B (Phospho-Ser731) Antibody - Protein Information

**Name** STAT5A

**Synonyms** STAT5

#### Function

Carries out a dual function: signal transduction and activation of transcription. Mediates cellular responses to the cytokine KITLG/SCF and other growth factors. Mediates cellular responses to ERBB4. May mediate cellular responses to activated FGFR1, FGFR2, FGFR3 and FGFR4. Binds to the GAS element and activates PRL- induced transcription. Regulates the expression of milk proteins during lactation.

#### Cellular Location

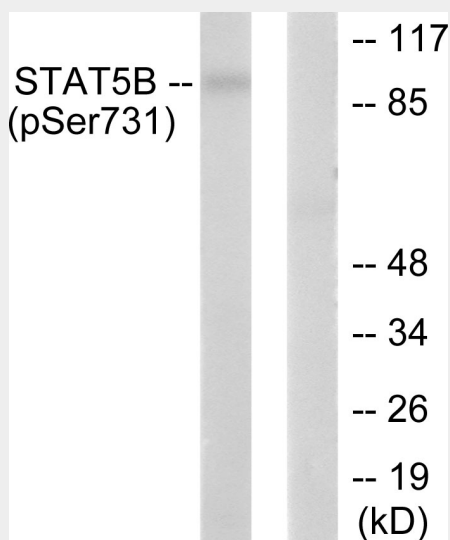
Cytoplasm. Nucleus. Note=Translocated into the nucleus in response to phosphorylation

## STAT5B (Phospho-Ser731) Antibody - Protocols

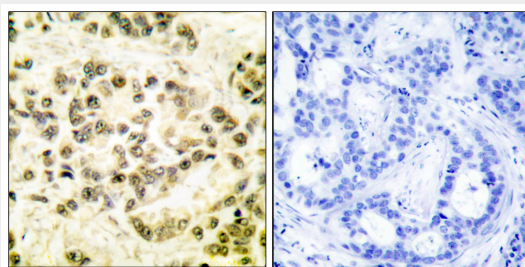
Provided below are standard protocols that you may find useful for product applications.

- [Western Blot](#)
- [Blocking Peptides](#)
- [Dot Blot](#)
- [Immunohistochemistry](#)
- [Immunofluorescence](#)
- [Immunoprecipitation](#)
- [Flow Cytometry](#)
- [Cell Culture](#)

## STAT5B (Phospho-Ser731) Antibody - Images



Western blot analysis of extracts from RAW264.7 cells, treated with EGF (200ng/ml, 30mins), using STAT5B (phospho-Ser731) antibody.



Immunohistochemical analysis of paraffin-embedded human breast carcinoma tissue using STAT5B (phospho-Ser731) antibody.

## STAT5B (Phospho-Ser731) Antibody - Background

Carries out a dual function: signal transduction and activation of transcription. Mediates cellular responses to the cytokine KITLG/SCF and other growth factors. Mediates cellular responses to ERBB4. May mediate cellular responses to activated FGFR1, FGFR2, FGFR3 and FGFR4. Binds to the GAS element and activates PRL-induced transcription. Regulates the expression of milk proteins during lactation.

**STAT5B (Phospho-Ser731) Antibody - References**

Hou J.,et al.Immunity 2:321-329(1995).

Lin J.X.,et al.Submitted (DEC-1995) to the EMBL/GenBank/DDBJ databases.

Tan D.,et al.Submitted (APR-2006) to the EMBL/GenBank/DDBJ databases.

Ota T.,et al.Nat. Genet. 36:40-45(2004).

Zody M.C.,et al.Nature 440:1045-1049(2006).