

Cyclin E1 (Phospho-Thr395) Antibody
Purified Rabbit Polyclonal Antibody (Pab)
Catalog # AP52368

Specification

Cyclin E1 (Phospho-Thr395) Antibody - Product Information

Application	WB, IHC
Primary Accession	P24864
Reactivity	Human
Host	Rabbit
Clonality	Polyclonal
Calculated MW	47077

Cyclin E1 (Phospho-Thr395) Antibody - Additional Information

Gene ID 898

Other Names

G1/S-specific cyclin-E1, CCNE1, CCNE

Dilution

WB~~1:1000

IHC~~1:50~100

Format

Rabbit IgG in phosphate buffered saline (without Mg²⁺ and Ca²⁺), pH 7.4, 150mM NaCl, 0.09% (W/V) sodium azide and 50% glycerol.

Storage Conditions

-20°C

Cyclin E1 (Phospho-Thr395) Antibody - Protein Information

Name CCNE1

Synonyms CCNE

Function

Essential for the control of the cell cycle at the G1/S (start) transition.

Cellular Location

Nucleus.

Tissue Location

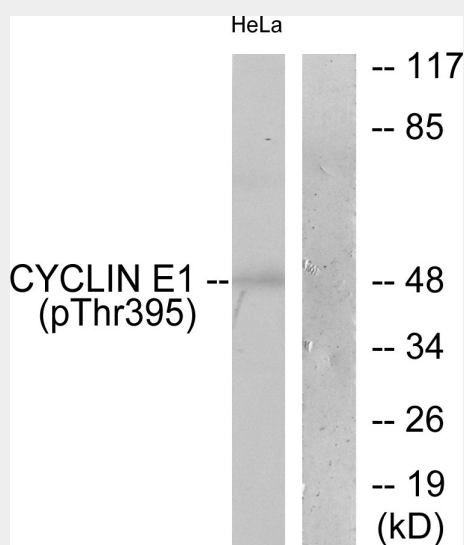
Highly expressed in testis and placenta. Low levels in bronchial epithelial cells.

Cyclin E1 (Phospho-Thr395) Antibody - Protocols

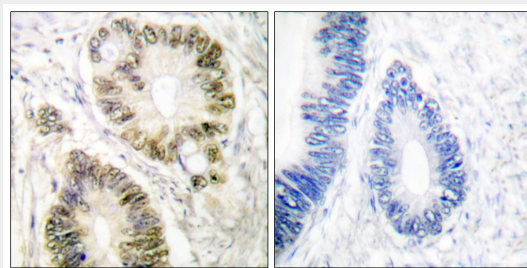
Provided below are standard protocols that you may find useful for product applications.

- [Western Blot](#)
- [Blocking Peptides](#)
- [Dot Blot](#)
- [Immunohistochemistry](#)
- [Immunofluorescence](#)
- [Immunoprecipitation](#)
- [Flow Cytometry](#)
- [Cell Culture](#)

Cyclin E1 (Phospho-Thr395) Antibody - Images



Western blot analysis of extracts from HeLa cells, treated with Paclitaxel (1uM, 60mins), using Cyclin E1 (phospho-Thr395) antibody.



Immunohistochemical analysis of paraffin-embedded human colon carcinoma tissue using Cyclin E1 (phospho-Thr395) antibody

Cyclin E1 (Phospho-Thr395) Antibody - Background

Essential for the control of the cell cycle at the G1/S (start) transition.

Cyclin E1 (Phospho-Thr395) Antibody - References

- Lew D.J., et al. Cell 66:1197-1206(1991).
Koff A., et al. Cell 66:1217-1228(1991).
Ohtsubo M., et al. Mol. Cell. Biol. 15:2612-2624(1995).

Ota T., et al. Nat. Genet. 36:40-45(2004).
Geng Y., et al. Oncogene 12:1173-1180(1996).