

EB3 Antibody
Purified Rabbit Polyclonal Antibody (Pab)
Catalog # AP52003

Specification

EB3 Antibody - Product Information

Application	WB
Primary Accession	O9UPY8
Reactivity	Human, Mouse, Rat
Host	Rabbit
Clonality	Polyclonal
Calculated MW	32 KDa
Antigen Region	221 - 280

EB3 Antibody - Additional Information

Gene ID 22924

Other Names

Microtubule-associated protein RP/EB family member 3, EB1 protein family member 3, EBF3, End-binding protein 3, EB3, RP3, MAPRE3

Target/Specificity

KLH conjugated synthetic peptide derived from human EB3

Dilution

WB~~ 1:8000

Format

0.01M PBS, pH 7.2, 0.09% (W/V) Sodium azide, Glycerol 50%

Storage

Store at -20 °C. Stable for 12 months from date of receipt

EB3 Antibody - Protein Information

Name MAPRE3

Function

Plus-end tracking protein (+TIP) that binds to the plus-end of microtubules and regulates the dynamics of the microtubule cytoskeleton (PubMed: [19255245](http://www.uniprot.org/citations/19255245), PubMed: [28814570](http://www.uniprot.org/citations/28814570)). Promotes microtubule growth (PubMed: [19255245](http://www.uniprot.org/citations/19255245), PubMed: [28814570](http://www.uniprot.org/citations/28814570)). May be involved in spindle function by stabilizing microtubules and anchoring them at centrosomes (PubMed: [19255245](http://www.uniprot.org/citations/19255245), PubMed: [28814570](http://www.uniprot.org/citations/28814570)).

<http://www.uniprot.org/citations/28814570> target="_blank">28814570). Also acts as a regulator of minus- end microtubule organization: interacts with the complex formed by AKAP9 and PDE4DIP, leading to recruit CAMSAP2 to the Golgi apparatus, thereby tethering non-centrosomal minus-end microtubules to the Golgi, an important step for polarized cell movement (PubMed: 28814570). Promotes elongation of CAMSAP2-decorated microtubule stretches on the minus-end of microtubules (PubMed: 28814570).

Cellular Location

Cytoplasm, cytoskeleton. Note=Associated with the microtubule network. Detected at the plus end of microtubules

Tissue Location

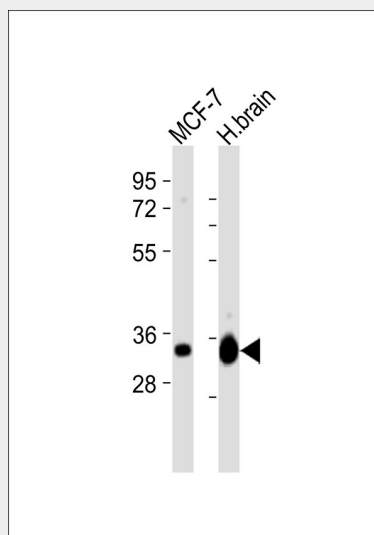
Predominantly expressed in brain and muscle.

EB3 Antibody - Protocols

Provided below are standard protocols that you may find useful for product applications.

- [Western Blot](#)
- [Blocking Peptides](#)
- [Dot Blot](#)
- [Immunohistochemistry](#)
- [Immunofluorescence](#)
- [Immunoprecipitation](#)
- [Flow Cytometry](#)
- [Cell Culture](#)

EB3 Antibody - Images



All lanes : Anti-EB3 Antibody at 1:8000 dilution Lane 1: MCF-7 whole cell lysates Lane 2: human brain lysates Lysates/proteins at 20 µg per lane. Secondary Goat Anti-Rabbit IgG, (H+L), Peroxidase conjugated at 1/10000 dilution Predicted band size : 32 kDa Blocking/Dilution buffer: 5% NFDM/TBST.

EB3 Antibody - Background

Binds to the plus end of microtubules and regulates the dynamics of the microtubule cytoskeleton. Promotes microtubule growth. May be involved in spindle function by stabilizing microtubules and anchoring them at centrosomes. May play a role in cell migration (By similarity).

EB3 Antibody - References

Nakagawa H., et al. *Oncogene* 19:210-216(2000).
Su L.-K., et al. *Genomics* 71:142-149(2001).
Halleck A., et al. Submitted (JUN-2004) to the EMBL/GenBank/DDBJ databases.
Hillier L.W., et al. *Nature* 434:724-731(2005).
Mural R.J., et al. Submitted (SEP-2005) to the EMBL/GenBank/DDBJ databases.

EB3 Antibody - Citations

- [Decreased tubulin-binding cofactor B was involved in the formation disorder of nascent astrocyte processes by regulating microtubule plus-end growth through binding with end-binding proteins 1 and 3 after chronic alcohol exposure](#)
- [Coronary anatomy and function: a story of Yin and Yang](#)