

**Mitofilin Antibody**  
**Purified Rabbit Polyclonal Antibody (Pab)**  
**Catalog # AP51990**

**Specification**

---

**Mitofilin Antibody - Product Information**

Application	WB
Primary Accession	<a href="#">O16891</a>
Reactivity	Human, Mouse, Rat
Host	Rabbit
Clonality	Polyclonal
Calculated MW	84 KDa
Antigen Region	421 - 480

**Mitofilin Antibody - Additional Information**

**Gene ID** 10989

**Other Names**

MICOS complex subunit MIC60, Cell proliferation-inducing gene 4/52 protein, Mitochondrial inner membrane protein, Mitofilin, p87/89, IMMT, HMP, MIC60, MINOS2

**Target/Specificity**

KLH conjugated synthetic peptide derived from human Mitofilin

**Dilution**

WB~~ 1:1000

**Format**

0.01M PBS, pH 7.2, 0.09% (W/V) Sodium azide, Glycerol 50%

**Storage**

Store at -20 °C. Stable for 12 months from date of receipt

**Mitofilin Antibody - Protein Information**

**Name** IMMT

**Synonyms** HMP, MIC60, MINOS2

**Function**

Component of the MICOS complex, a large protein complex of the mitochondrial inner membrane that plays crucial roles in the maintenance of crista junctions, inner membrane architecture, and formation of contact sites to the outer membrane (PubMed: [22114354](http://www.uniprot.org/citations/22114354), PubMed: [25781180](http://www.uniprot.org/citations/25781180), PubMed: [32567732](http://www.uniprot.org/citations/32567732), PubMed: [33130824](http://www.uniprot.org/citations/33130824)). Plays an

important role in the maintenance of the MICOS complex stability and the mitochondrial cristae morphology (PubMed:<a href="http://www.uniprot.org/citations/22114354" target="\_blank">22114354</a>, PubMed:<a href="http://www.uniprot.org/citations/25781180" target="\_blank">25781180</a>, PubMed:<a href="http://www.uniprot.org/citations/32567732" target="\_blank">32567732</a>, PubMed:<a href="http://www.uniprot.org/citations/33130824" target="\_blank">33130824</a>).

### Cellular Location

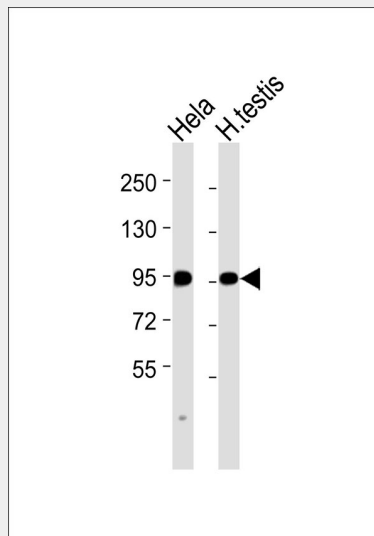
Mitochondrion inner membrane; Single-pass membrane protein. Mitochondrion

### Mitofilin Antibody - Protocols

Provided below are standard protocols that you may find useful for product applications.

- [Western Blot](#)
- [Blocking Peptides](#)
- [Dot Blot](#)
- [Immunohistochemistry](#)
- [Immunofluorescence](#)
- [Immunoprecipitation](#)
- [Flow Cytometry](#)
- [Cell Culture](#)

### Mitofilin Antibody - Images



All lanes : Anti-Mitofilin Antibody at 1:1000 dilution Lane 1: HeLa whole cell lysates Lane 2: human testis lysates Lysates/proteins at 20 µg per lane. Secondary Goat Anti-Rabbit IgG, (H+L), Peroxidase conjugated at 1/10000 dilution Predicted band size : 84 kDa Blocking/Dilution buffer: 5% NFDN/TBST.

### Mitofilin Antibody - References

- Icho T., et al. Gene 144:301-306(1994).  
Gieffers C., et al. Exp. Cell Res. 232:395-399(1997).  
Ebert L., et al. Submitted (JUN-2004) to the EMBL/GenBank/DDBJ databases.  
Ota T., et al. Nat. Genet. 36:40-45(2004).  
Kim J.W., et al. Submitted (FEB-2005) to the EMBL/GenBank/DDBJ databases.

