

**Inhibin beta A Antibody**  
**Purified Rabbit Polyclonal Antibody (Pab)**  
**Catalog # AP51977****Specification**

---

**Inhibin beta A Antibody - Product Information**

Application	<b>WB</b>
Primary Accession	<a href="#">P08476</a>
Reactivity	<b>Human, Mouse, Rat</b>
Host	<b>Rabbit</b>
Clonality	<b>Polyclonal</b>
Calculated MW	<b>47 KDa</b>
Antigen Region	<b>61 - 120</b>

**Inhibin beta A Antibody - Additional Information****Gene ID** 3624**Other Names**

Inhibin beta A chain, Activin beta-A chain, Erythroid differentiation protein, EDF, INHBA

**Target/Specificity**

KLH conjugated synthetic peptide derived from human Inhibin beta A

**Dilution**

WB~~ 1:1000

**Format**

0.01M PBS, pH 7.2, 0.09% (W/V) Sodium azide, Glycerol 50%

**Storage**

Store at -20 °C. Stable for 12 months from date of receipt

**Inhibin beta A Antibody - Protein Information****Name** INHBA**Function**

Inhibins and activins inhibit and activate, respectively, the secretion of follitropin by the pituitary gland. Inhibins/activins are involved in regulating a number of diverse functions such as hypothalamic and pituitary hormone secretion, gonadal hormone secretion, germ cell development and maturation, erythroid differentiation, insulin secretion, nerve cell survival, embryonic axial development or bone growth, depending on their subunit composition. Inhibins appear to oppose the functions of activins.

**Cellular Location**

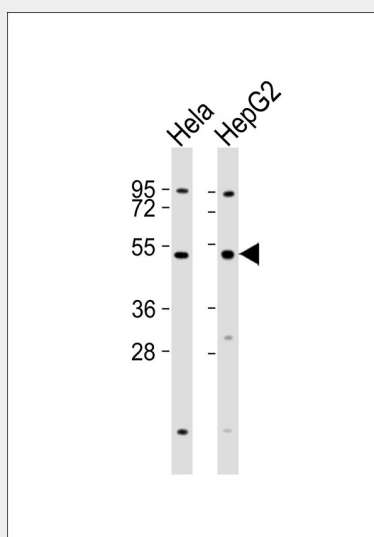
Secreted.

## Inhibin beta A Antibody - Protocols

Provided below are standard protocols that you may find useful for product applications.

- [Western Blot](#)
- [Blocking Peptides](#)
- [Dot Blot](#)
- [Immunohistochemistry](#)
- [Immunofluorescence](#)
- [Immunoprecipitation](#)
- [Flow Cytometry](#)
- [Cell Culture](#)

## Inhibin beta A Antibody - Images



All lanes : Anti-Inhibin beta A Antibody at 1:1000 dilution Lane 1: HeLa whole cell lysates Lane 2: HepG2 whole cell lysates Lysates/proteins at 20  $\mu$ g per lane. Secondary Goat Anti-Rabbit IgG, (H+L), Peroxidase conjugated at 1/10000 dilution Predicted band size : 47 kDa Blocking/Dilution buffer: 5% NFDM/TBST.

## Inhibin beta A Antibody - Background

Inhibins and activins inhibit and activate, respectively, the secretion of follitropin by the pituitary gland. Inhibins/activins are involved in regulating a number of diverse functions such as hypothalamic and pituitary hormone secretion, gonadal hormone secretion, germ cell development and maturation, erythroid differentiation, insulin secretion, nerve cell survival, embryonic axial development or bone growth, depending on their subunit composition. Inhibins appear to oppose the functions of activins.

## Inhibin beta A Antibody - References

- Mason A.J., et al. *Biochem. Biophys. Res. Commun.* 135:957-964(1986).  
Murata M., et al. *Proc. Natl. Acad. Sci. U.S.A.* 85:2434-2438(1988).  
Tanimoto K., et al. *DNA Seq.* 2:103-110(1991).  
Hillier L.W., et al. *Nature* 424:157-164(2003).  
Stewart A.G., et al. *FEBS Lett.* 206:329-334(1986).