

RRAS2 Antibody
Purified Rabbit Polyclonal Antibody (Pab)
Catalog # AP51840

Specification

RRAS2 Antibody - Product Information

Application	WB
Primary Accession	P62070
Reactivity	Human, Mouse
Host	Rabbit
Clonality	Polyclonal
Calculated MW	26 KDa
Antigen Region	91 - 150

RRAS2 Antibody - Additional Information

Gene ID 22800

Other Names

Ras-related protein R-Ras2, Ras-like protein TC21, Teratocarcinoma oncogene, RRAS2, TC21

Target/Specificity

KLH conjugated synthetic peptide derived from human RRAS2

Dilution

WB~~ 1:1000

Format

0.01M PBS, pH 7.2, 0.09% (W/V) Sodium azide, Glycerol 50%

Storage

Store at -20 °C. Stable for 12 months from date of receipt

RRAS2 Antibody - Protein Information

Name RRAS2 ([HGNC:17271](#))

Synonyms TC21

Function

GTP-binding protein with GTPase activity involved in the regulation of MAPK signaling pathway, thereby controlling multiple cellular processes (PubMed: [31130282](http://www.uniprot.org/citations/31130282)). Involved in the regulation of MAPK signaling pathway (PubMed: [31130282](http://www.uniprot.org/citations/31130282), PubMed: [31130285](http://www.uniprot.org/citations/31130285)). Regulation of craniofacial development (PubMed: [31130282](http://www.uniprot.org/citations/31130282), PubMed: [31130285](http://www.uniprot.org/citations/31130285)).

target="_blank">31130285).

Cellular Location

Cell membrane; Lipid-anchor; Cytoplasmic side. Golgi apparatus membrane; Lipid- anchor

Tissue Location

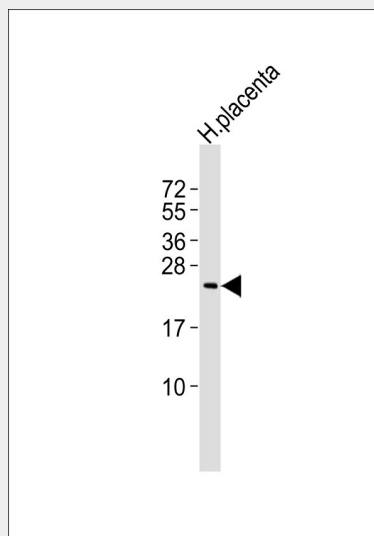
Ubiquitously present in all tissues examined, with the highest levels in heart, placenta, and skeletal muscle. Moderate levels in lung and liver; low levels in brain, kidney, and pancreas

RRAS2 Antibody - Protocols

Provided below are standard protocols that you may find useful for product applications.

- [Western Blot](#)
- [Blocking Peptides](#)
- [Dot Blot](#)
- [Immunohistochemistry](#)
- [Immunofluorescence](#)
- [Immunoprecipitation](#)
- [Flow Cytometry](#)
- [Cell Culture](#)

RRAS2 Antibody - Images



Anti-RRAS2 Antibody at 1:1000 dilution + human placenta lysates Lysates/proteins at 20 µg per lane. Secondary Goat Anti-Rabbit IgG, (H+L), Peroxidase conjugated at 1/10000 dilution Predicted band size : 23 kDa Blocking/Dilution buffer: 5% NFDM/TBST.

RRAS2 Antibody - Background

It is a plasma membrane-associated GTP-binding protein with GTPase activity. Might transduce growth inhibitory signals across the cell membrane, exerting its effect through an effector shared with the Ras proteins but in an antagonistic fashion.

RRAS2 Antibody - References

Drivas G.T., et al. Mol. Cell. Biol. 10:1793-1798(1990).

Chan A.M.-L.,et al.Proc. Natl. Acad. Sci. U.S.A. 91:7558-7562(1994).
Puhl H.L. III,et al.Submitted (MAR-2002) to the EMBL/GenBank/DDBJ databases.
Ota T.,et al.Nat. Genet. 36:40-45(2004).
Taylor T.D.,et al.Nature 440:497-500(2006).