

POLR2H Antibody
Purified Rabbit Polyclonal Antibody (Pab)
Catalog # AP51766

Specification

POLR2H Antibody - Product Information

Application	WB
Primary Accession	P52434
Reactivity	Human, Mouse, Rat
Host	Rabbit
Clonality	Polyclonal
Calculated MW	17 KDa
Antigen Region	1 - 60

POLR2H Antibody - Additional Information

Gene ID 5437

Other Names

DNA-directed RNA polymerases I, II, and III subunit RPABC3, RNA polymerases I, II, and III subunit ABC3, DNA-directed RNA polymerase II subunit H, DNA-directed RNA polymerases I, II, and III 171 kDa polypeptide, RPB17, RPB8 homolog, hRPB8, POLR2H

Target/Specificity

KLH conjugated synthetic peptide derived from human POLR2H

Dilution

WB~~ 1:1000

Format

0.01M PBS, pH 7.2, 0.09% (W/V) Sodium azide, Glycerol 50%

Storage

Store at -20 °C. Stable for 12 months from date of receipt

POLR2H Antibody - Protein Information

Name POLR2H ([HGNC:9195](#))

Function

DNA-dependent RNA polymerase catalyzes the transcription of DNA into RNA using the four ribonucleoside triphosphates as substrates. Common component of RNA polymerases I, II and III which synthesize ribosomal RNA precursors, mRNA precursors and many functional non-coding RNAs, and small RNAs, such as 5S rRNA and tRNAs, respectively.

Cellular Location

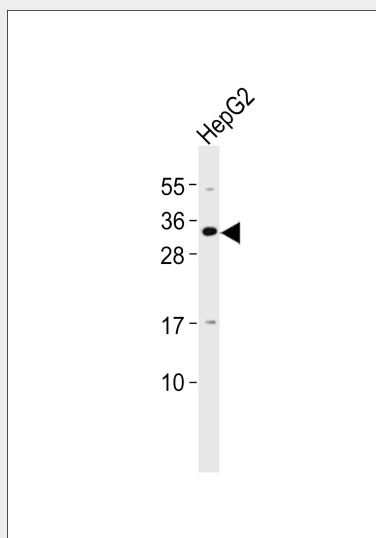
Nucleus {ECO:0000269|PubMed:33335104, ECO:0000269|PubMed:9852112, ECO:0000269|Ref.6}.
Nucleus, nucleolus

POLR2H Antibody - Protocols

Provided below are standard protocols that you may find useful for product applications.

- [Western Blot](#)
- [Blocking Peptides](#)
- [Dot Blot](#)
- [Immunohistochemistry](#)
- [Immunofluorescence](#)
- [Immunoprecipitation](#)
- [Flow Cytometry](#)
- [Cell Culture](#)

POLR2H Antibody - Images



Anti-POLR2H Antibody at 1:1000 dilution + HepG2 whole cell lysates Lysates/proteins at 20 μ g per lane. Secondary Goat Anti-Rabbit IgG, (H+L), Peroxidase conjugated at 1/10000 dilution Predicted band size : 17 kDa Blocking/Dilution buffer: 5% NFD/MTBST.

POLR2H Antibody - Background

DNA-dependent RNA polymerase catalyzes the transcription of DNA into RNA using the four ribonucleoside triphosphates as substrates. Common component of RNA polymerases I, II and III which synthesize ribosomal RNA precursors, mRNA precursors and many functional non-coding RNAs, and small RNAs, such as 5S rRNA and tRNAs, respectively.

POLR2H Antibody - References

- McKune K., et al. Mol. Cell. Biol. 15:6895-6900(1995).
Shpakovski G.V., et al. Mol. Cell. Biol. 15:4702-4710(1995).
Shpakovski G.V., et al. Submitted (DEC-1999) to the EMBL/GenBank/DDBJ databases.
Bienvenut W.V., et al. Submitted (AUG-2005) to UniProtKB.
Kershner E., et al. J. Biol. Chem. 273:34444-34453(1998).