

**MAP3K11 Antibody**  
**Affinity Purified Rabbit Polyclonal Antibody (Pab)**  
**Catalog # AP5174d**

**Specification**

---

**MAP3K11 Antibody - Product Information**

Application	WB,E
Primary Accession	<a href="#">O16584</a>
Reactivity	Human, Mouse
Host	Rabbit
Clonality	Polyclonal
Isotype	Rabbit IgG
Calculated MW	92688

**MAP3K11 Antibody - Additional Information**

**Gene ID** 4296

**Other Names**

Mitogen-activated protein kinase kinase kinase 11, Mixed lineage kinase 3, Src-homology 3 domain-containing proline-rich kinase, MAP3K11 ([HGNC:6850](http://www.genenames.org/cgi-bin/gene_symbol_report?hgnc_id=6850))

**Target/Specificity**

This MAP3K11 antibody is generated from rabbits immunized with MAP3K11 recombinant protein.

**Dilution**

WB~~1:1000

**Format**

Purified polyclonal antibody supplied in PBS with 0.09% (W/V) sodium azide. This antibody is purified through a protein A column, followed by peptide affinity purification.

**Storage**

Maintain refrigerated at 2-8°C for up to 2 weeks. For long term storage store at -20°C in small aliquots to prevent freeze-thaw cycles.

**Precautions**

MAP3K11 Antibody is for research use only and not for use in diagnostic or therapeutic procedures.

**MAP3K11 Antibody - Protein Information**

**Name** MAP3K11 ([HGNC:6850](#))

**Function** Activates the JUN N-terminal pathway. Required for serum- stimulated cell proliferation and for mitogen and cytokine activation of MAPK14 (p38), MAPK3 (ERK) and MAPK8 (JNK1) through phosphorylation and activation of MAP2K4/MKK4 and MAP2K7/MKK7. Plays a role in mitogen-

stimulated phosphorylation and activation of BRAF, but does not phosphorylate BRAF directly. Influences microtubule organization during the cell cycle.

#### Cellular Location

Cytoplasm, cytoskeleton, microtubule organizing center, centrosome. Note=Location is cell cycle dependent

#### Tissue Location

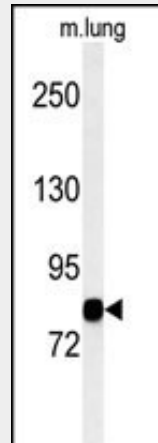
Expressed in a wide variety of normal and neoplastic tissues including fetal lung, liver, heart and kidney, and adult lung, liver, heart, kidney, placenta, skeletal muscle, pancreas and brain.

### MAP3K11 Antibody - Protocols

Provided below are standard protocols that you may find useful for product applications.

- [Western Blot](#)
- [Blocking Peptides](#)
- [Dot Blot](#)
- [Immunohistochemistry](#)
- [Immunofluorescence](#)
- [Immunoprecipitation](#)
- [Flow Cytometry](#)
- [Cell Culture](#)

### MAP3K11 Antibody - Images



Western blot analysis of MAP3K11 Antibody (Cat. #AP5174d) in mouse lung tissue lysates (35ug/lane).MAP3K11 (arrow) was detected using the purified Pab.

### MAP3K11 Antibody - Background

MAP3K11 is a member of the serine/threonine kinase family. This kinase contains a SH3 domain and a leucine zipper-basic motif. This kinase preferentially activates MAPK8/JNK kinase, and functions as a positive regulator of JNK signaling pathway. This kinase can directly phosphorylate, and activates I $\kappa$ B kinase alpha and beta, and is found to be involved in the transcription activity of NF- $\kappa$ B mediated by Rho family GTPases and CDC42.

### MAP3K11 Antibody - References

Rangasamy, V., et al. Cancer Res. 70(4):1731-1740(2010)

Velho, S., et al. Hum. Mol. Genet. 19(4):697-706(2010)

Cole, E.T., et al. Biochim. Biophys. Acta 1793(12):1811-1818(2009)