

RPS4X Antibody
Purified Rabbit Polyclonal Antibody (Pab)
Catalog # AP51708

Specification

RPS4X Antibody - Product Information

Application	WB
Primary Accession	P62701
Reactivity	Human, Mouse, Rat
Host	Rabbit
Clonality	Polyclonal
Calculated MW	30 KDa
Antigen Region	71 - 130

RPS4X Antibody - Additional Information

Gene ID 6191

Other Names

40S ribosomal protein S4, X isoform, SCR10, Single copy abundant mRNA protein, RPS4X, CCG2, RPS4, SCAR

Target/Specificity

KLH conjugated synthetic peptide derived from human RPS4X

Dilution

WB~~ 1:1000

Format

0.01M PBS, pH 7.2, 0.09% (W/V) Sodium azide, Glycerol 50%

Storage

Store at -20 °C. Stable for 12 months from date of receipt

RPS4X Antibody - Protein Information

Name RPS4X ([HGNC:10424](#))

Synonyms CCG2, RPS4, SCAR

Function

Component of the small ribosomal subunit. The ribosome is a large ribonucleoprotein complex responsible for the synthesis of proteins in the cell (PubMed:23636399). Part of the small subunit (SSU) processome, first precursor of the small eukaryotic ribosomal subunit. During the assembly of the SSU processome in the nucleolus, many ribosome biogenesis factors, an RNA chaperone and ribosomal proteins associate with the nascent pre-rRNA and work in concert to generate RNA folding, modifications, rearrangements and cleavage as well as targeted

degradation of pre-ribosomal RNA by the RNA exosome (PubMed:34516797).

Cellular Location

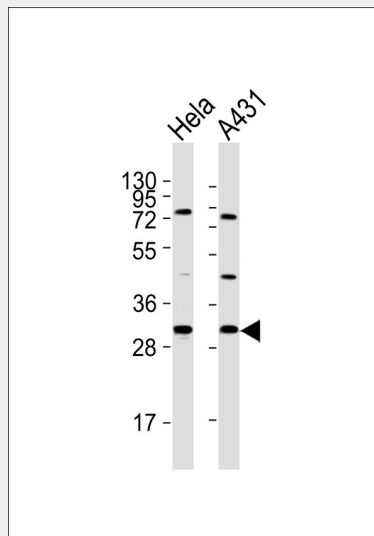
Cytoplasm. Nucleus, nucleolus. Note=Localized in cytoplasmic mRNP granules containing untranslated mRNAs.

RPS4X Antibody - Protocols

Provided below are standard protocols that you may find useful for product applications.

- [Western Blot](#)
- [Blocking Peptides](#)
- [Dot Blot](#)
- [Immunohistochemistry](#)
- [Immunofluorescence](#)
- [Immunoprecipitation](#)
- [Flow Cytometry](#)
- [Cell Culture](#)

RPS4X Antibody - Images



All lanes : Anti-RPS4X Antibody at 1:1000 dilution Lane 1: HeLa whole cell lysates Lane 2: A431 whole cell lysates Lysates/proteins at 20 µg per lane. Secondary Goat Anti-Rabbit IgG, (H+L), Peroxidase conjugated at 1/10000 dilution Predicted band size : 30 kDa Blocking/Dilution buffer: 5% NFD/MTBST.

RPS4X Antibody - References

- Fisher E.M.C.,et al.Cell 63:1205-1218(1990).
Watanabe M.,et al.J. Cell Sci. 100:35-43(1991).
Zuo L.,et al.Submitted (JAN-1998) to the EMBL/GenBank/DDBJ databases.
Ebert L.,et al.Submitted (JUN-2004) to the EMBL/GenBank/DDBJ databases.
Dmitrenko V.V.,et al.Submitted (APR-1996) to the EMBL/GenBank/DDBJ databases.