

RPS18 Antibody
Purified Rabbit Polyclonal Antibody (Pab)
Catalog # AP51705

Specification

RPS18 Antibody - Product Information

Application	WB
Primary Accession	P62269
Reactivity	Human, Mouse, Rat
Host	Rabbit
Clonality	Polyclonal
Calculated MW	18 KDa
Antigen Region	71 - 130

RPS18 Antibody - Additional Information

Gene ID 6222

Other Names

40S ribosomal protein S18, Ke-3, Ke3, RPS18, D6S218E

Target/Specificity

KLH conjugated synthetic peptide derived from human RPS18

Dilution

WB~~ 1:1000

Format

0.01M PBS, pH 7.2, 0.09% (W/V) Sodium azide, Glycerol 50%

Storage

Store at -20 °C. Stable for 12 months from date of receipt

RPS18 Antibody - Protein Information

Name RPS18

Synonyms D6S218E

Function

Component of the small ribosomal subunit. The ribosome is a large ribonucleoprotein complex responsible for the synthesis of proteins in the cell.

Cellular Location

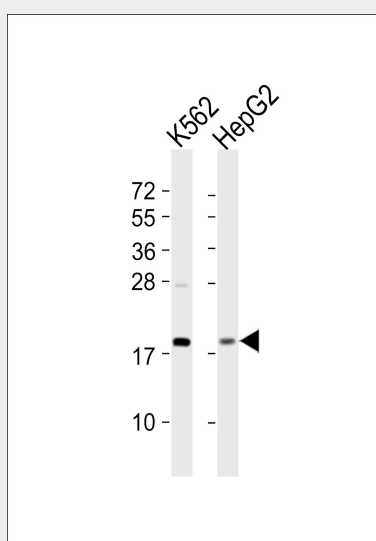
Cytoplasm.

RPS18 Antibody - Protocols

Provided below are standard protocols that you may find useful for product applications.

- [Western Blot](#)
- [Blocking Peptides](#)
- [Dot Blot](#)
- [Immunohistochemistry](#)
- [Immunofluorescence](#)
- [Immunoprecipitation](#)
- [Flow Cytometry](#)
- [Cell Culture](#)

RPS18 Antibody - Images



All lanes : Anti-RPS18 Antibody at 1:1000 dilution Lane 1: K562 whole cell lysates Lane 2: HepG2 whole cell lysates Lysates/proteins at 20 µg per lane. Secondary Goat Anti-Rabbit IgG, (H+L), Peroxidase conjugated at 1/10000 dilution Predicted band size : 18 kDa Blocking/Dilution buffer: 5% NFDM/TBST.

RPS18 Antibody - Background

Located at the top of the head of the 40S subunit, it contacts several helices of the 18S rRNA (By similarity).

RPS18 Antibody - References

- Chassin D., et al. *Nucleic Acids Res.* 21:745-745(1993).
Mungall A.J., et al. *Nature* 425:805-811(2003).
Mural R.J., et al. Submitted (JUL-2005) to the EMBL/GenBank/DDBJ databases.
Bienvenut W.V., et al. Submitted (NOV-2006) to UniProtKB.
Vladimirov S.N., et al. *Eur. J. Biochem.* 239:144-149(1996).