

Galectin 1 Antibody
Purified Rabbit Polyclonal Antibody (Pab)
Catalog # AP51698

Specification

Galectin 1 Antibody - Product Information

Application	WB
Primary Accession	P09382
Reactivity	Human, Mouse, Rat
Host	Rabbit
Clonality	Polyclonal
Calculated MW	15 KDa
Antigen Region	31 - 90

Galectin 1 Antibody - Additional Information

Gene ID 3956

Other Names

Galectin-1, Gal-1, 14 kDa laminin-binding protein, HLBP14, 14 kDa lectin, Beta-galactoside-binding lectin L-14-I, Galaptin, HBL, HPL, Lactose-binding lectin 1, Lectin galactoside-binding soluble 1, Putative MAPK-activating protein PM12, S-Lac lectin 1, LGALS1

Target/Specificity

KLH conjugated synthetic peptide derived from human Galectin 1

Dilution

WB~~ 1:1000

Format

0.01M PBS, pH 7.2, 0.09% (W/V) Sodium azide, Glycerol 50%

Storage

Store at -20 °C. Stable for 12 months from date of receipt

Galectin 1 Antibody - Protein Information

Name LGALS1 ([HGNC:6561](#))

Function

Lectin that binds beta-galactoside and a wide array of complex carbohydrates. Plays a role in regulating apoptosis, cell proliferation and cell differentiation. Inhibits CD45 protein phosphatase activity and therefore the dephosphorylation of Lyn kinase. Strong inducer of T-cell apoptosis. Plays a negative role in Th17 cell differentiation via activation of the receptor CD69 (PubMed:24752896).

Cellular Location

Secreted, extracellular space, extracellular matrix. Cytoplasm. Secreted Note=Can be secreted;

the secretion is dependent on protein unfolding and facilitated by the cargo receptor TMED10; it results in protein translocation from the cytoplasm into the ERGIC (endoplasmic reticulum- Golgi intermediate compartment) followed by vesicle entry and secretion.

Tissue Location

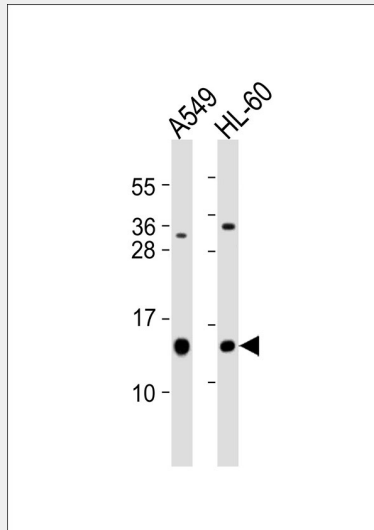
Expressed in placenta, maternal decidua and fetal membranes. Within placenta, expressed in trophoblasts, stromal cells, villous endothelium, syncytiotrophoblast apical membrane and villous stroma. Within fetal membranes, expressed in amnion, chorioamniotic mesenchyma and chorion (at protein level). Expressed in cardiac, smooth, and skeletal muscle, neurons, thymus, kidney and hematopoietic cells.

Galectin 1 Antibody - Protocols

Provided below are standard protocols that you may find useful for product applications.

- [Western Blot](#)
- [Blocking Peptides](#)
- [Dot Blot](#)
- [Immunohistochemistry](#)
- [Immunofluorescence](#)
- [Immunoprecipitation](#)
- [Flow Cytometry](#)
- [Cell Culture](#)

Galectin 1 Antibody - Images



All lanes : Anti-Galectin 1 Antibody at 1:1000 dilution Lane 1: A549 whole cell lysates Lane 2: HL-60 whole cell lysates Lysates/proteins at 20 µg per lane. Secondary Goat Anti-Rabbit IgG, (H+L), Peroxidase conjugated at 1/10000 dilution Predicted band size : 15 kDa Blocking/Dilution buffer: 5% NFDN/TBST.

Galectin 1 Antibody - Background

May regulate apoptosis, cell proliferation and cell differentiation. Binds beta-galactoside and a wide array of complex carbohydrates. Inhibits CD45 protein phosphatase activity and therefore the dephosphorylation of Lyn kinase. Strong inducer of T-cell apoptosis.

Galectin 1 Antibody - References

- Hirabayashi J., et al. *Biochim. Biophys. Acta* 1008:85-91(1989).
Couraud P.-O., et al. *J. Biol. Chem.* 264:1310-1316(1989).
Abbott W.M., et al. *Biochem. J.* 259:291-294(1989).
Than N.G., et al. *Proc. Natl. Acad. Sci. U.S.A.* 105:15819-15824(2008).
Gitt M.A., et al. *Biochemistry* 30:82-89(1991).