

**NBL1 Antibody**  
**Purified Rabbit Polyclonal Antibody (Pab)**  
**Catalog # AP51678**

**Specification**

---

**NBL1 Antibody - Product Information**

Application	<b>WB</b>
Primary Accession	<a href="#">P41271</a>
Reactivity	<b>Human, Mouse, Rat</b>
Host	<b>Rabbit</b>
Clonality	<b>Polyclonal</b>
Calculated MW	<b>19 KDa</b>
Antigen Region	<b>121 - 180</b>

**NBL1 Antibody - Additional Information**

**Gene ID** 100532736;4681

**Other Names**

Neuroblastoma suppressor of tumorigenicity 1, DAN domain family member 1, Protein N03, Zinc finger protein DAN, NBL1, DAN, DAND1

**Target/Specificity**

KLH conjugated synthetic peptide derived from human NBL1

**Dilution**

WB~~ 1:1000

**Format**

0.01M PBS, pH 7.2, 0.09% (W/V) Sodium azide, Glycerol 50%

**Storage**

Store at -20 °C. Stable for 12 months from date of receipt

**NBL1 Antibody - Protein Information**

**Name** NBL1

**Synonyms** DAN, DAND1

**Function**

Possible candidate as a tumor suppressor gene of neuroblastoma. May play an important role in preventing cells from entering the final stage (G1/S) of the transformation process.

**Cellular Location**

Secreted.

**Tissue Location**

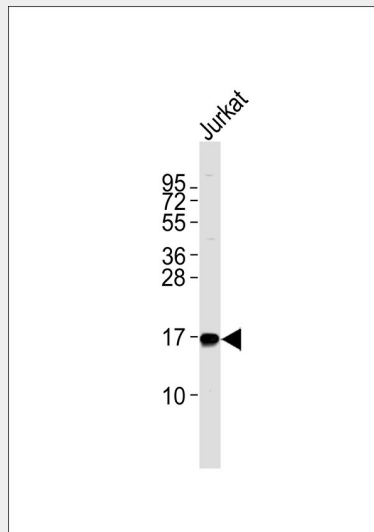
Most abundant in normal lung and meningioma.

### **NBL1 Antibody - Protocols**

Provided below are standard protocols that you may find useful for product applications.

- [Western Blot](#)
- [Blocking Peptides](#)
- [Dot Blot](#)
- [Immunohistochemistry](#)
- [Immunofluorescence](#)
- [Immunoprecipitation](#)
- [Flow Cytometry](#)
- [Cell Culture](#)

### **NBL1 Antibody - Images**



Anti-NBL1 Antibody at 1:1000 dilution + Jurkat whole cell lysates Lysates/proteins at 20  $\mu$ g per lane. Secondary Goat Anti-Rabbit IgG, (H+L), Peroxidase conjugated at 1/10000 dilution Predicted band size : 19 kDa Blocking/Dilution buffer: 5% NFDM/TBST.

### **NBL1 Antibody - Background**

Possible candidate as a tumor suppressor gene of neuroblastoma. May play an important role in preventing cells from entering the final stage (G1/S) of the transformation process.

### **NBL1 Antibody - References**

- Enomoto H., et al. *Oncogene* 9:2785-2791(1994).  
Ozaki T., et al. Submitted (MAR-2000) to the EMBL/GenBank/DDBJ databases.  
Wu J., et al. Submitted (JUL-2001) to the EMBL/GenBank/DDBJ databases.  
Ota T., et al. *Nat. Genet.* 36:40-45(2004).  
Kalnina N., et al. Submitted (OCT-2004) to the EMBL/GenBank/DDBJ databases.