

GPR175 Antibody
Purified Rabbit Polyclonal Antibody (Pab)
Catalog # AP51583

Specification

GPR175 Antibody - Product Information

Application	WB
Primary Accession	O86W33
Reactivity	Human, Mouse, Rat
Host	Rabbit
Clonality	Polyclonal
Calculated MW	41 KDa
Antigen Region	171 - 230

GPR175 Antibody - Additional Information

Gene ID 131601

Other Names

Transmembrane protein adipocyte-associated 1, Integral membrane protein GPR175, Transmembrane protein 227, TPRA1, GPR175, TMEM227

Target/Specificity

KLH conjugated synthetic peptide derived from human GPR175

Dilution

WB~~ 1:1000

Format

0.01M PBS, pH 7.2, 0.09% (W/V) Sodium azide, Glycerol 50%

Storage

Store at -20 °C. Stable for 12 months from date of receipt

GPR175 Antibody - Protein Information

Name TPRA1

Synonyms GPR175, TMEM227

Cellular Location

Membrane; Multi-pass membrane protein.

Tissue Location

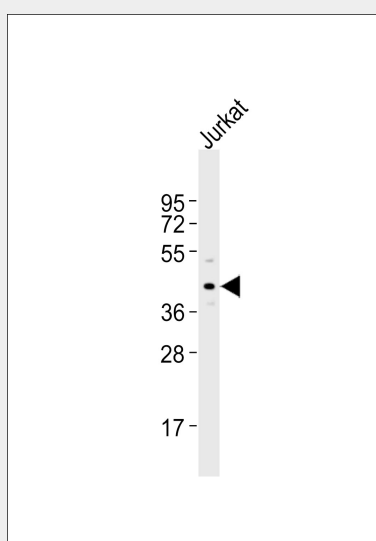
Ubiquitous, with higher levels in heart, placenta and kidney.

GPR175 Antibody - Protocols

Provided below are standard protocols that you may find useful for product applications.

- [Western Blot](#)
- [Blocking Peptides](#)
- [Dot Blot](#)
- [Immunohistochemistry](#)
- [Immunofluorescence](#)
- [Immunoprecipitation](#)
- [Flow Cytometry](#)
- [Cell Culture](#)

GPR175 Antibody - Images



Anti-GPR175 Antibody at 1:1000 dilution + Jurkat whole cell lysates Lysates/proteins at 20 µg per lane. Secondary Goat Anti-Rabbit IgG, (H+L), Peroxidase conjugated at 1/10000 dilution Predicted band size : 41 kDa Blocking/Dilution buffer: 5% NFDM/TBST.

GPR175 Antibody - References

- Saito T., et al. Submitted (JAN-2000) to the EMBL/GenBank/DDBJ databases.
Wan D., et al. Proc. Natl. Acad. Sci. U.S.A. 101:15724-15729(2004).
Muzny D.M., et al. Nature 440:1194-1198(2006).
Mural R.J., et al. Submitted (SEP-2005) to the EMBL/GenBank/DDBJ databases.
Yang H., et al. Endocrinology 140:2859-2867(1999).