

**Topoisomerase 2 beta Antibody**  
**Purified Rabbit Polyclonal Antibody (Pab)**  
**Catalog # AP51578**

**Specification**

---

**Topoisomerase 2 beta Antibody - Product Information**

Application	<b>WB</b>
Primary Accession	<a href="#">Q02880</a>
Reactivity	<b>Human</b>
Host	<b>Rabbit</b>
Clonality	<b>Polyclonal</b>
Calculated MW	<b>183 KDa</b>
Antigen Region	<b>11 - 70</b>

**Topoisomerase 2 beta Antibody - Additional Information**

**Gene ID** 7155

**Other Names**

DNA topoisomerase 2-beta, DNA topoisomerase II, beta isozyme, TOP2B

**Target/Specificity**

KLH conjugated synthetic peptide derived from human Topoisomerase 2 beta

**Dilution**

WB~~ 1:1000

**Format**

0.01M PBS, pH 7.2, 0.09% (W/V) Sodium azide, Glycerol 50%

**Storage**

Store at -20 °C. Stable for 12 months from date of receipt

**Topoisomerase 2 beta Antibody - Protein Information**

**Name** TOP2B

**Function**

Key decatenating enzyme that alters DNA topology by binding to two double-stranded DNA molecules, generating a double-stranded break in one of the strands, passing the intact strand through the broken strand, and religating the broken strand. Plays a role in B-cell differentiation.

**Cellular Location**

Nucleus, nucleolus. Nucleus, nucleoplasm. Nucleus

**Tissue Location**

Expressed in the tonsil, spleen, lymph node, thymus, skin, pancreas, testis, colon, kidney, liver, brain and lung (PubMed:9155056). Also found in breast, colon and lung carcinomas, Hodgkin's

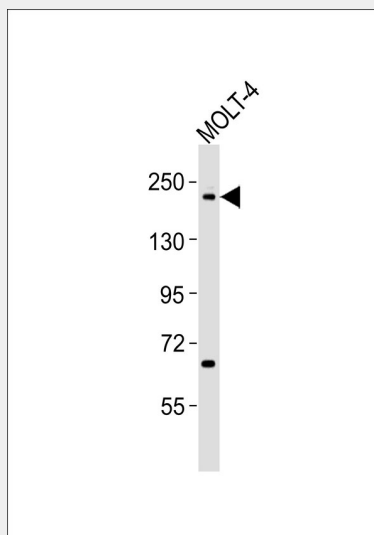
disease, large-cell non-Hodgkin's lymphoma, lymphocytic lymphomas and seminomas (PubMed:9155056).

### Topoisomerase 2 beta Antibody - Protocols

Provided below are standard protocols that you may find useful for product applications.

- [Western Blot](#)
- [Blocking Peptides](#)
- [Dot Blot](#)
- [Immunohistochemistry](#)
- [Immunofluorescence](#)
- [Immunoprecipitation](#)
- [Flow Cytometry](#)
- [Cell Culture](#)

### Topoisomerase 2 beta Antibody - Images



Anti-Topoisomerase 2 beta Antibody at 1:1000 dilution + MOLT-4 whole cell lysates Lysates/proteins at 20 µg per lane. Secondary Goat Anti-Rabbit IgG, (H+L), Peroxidase conjugated at 1/10000 dilution Predicted band size : 183 kDa Blocking/Dilution buffer: 5% NFDM/TBST.

### Topoisomerase 2 beta Antibody - Background

Control of topological states of DNA by transient breakage and subsequent rejoining of DNA strands. Topoisomerase II makes double-strand breaks. Indirectly involved in vitamin D- coupled transcription regulation via its association with the WINAC complex, a chromatin-remodeling complex recruited by vitamin D receptor (VDR), which is required for the ligand-bound VDR-mediated transrepression of the CYP27B1 gene.

### Topoisomerase 2 beta Antibody - References

- Jenkins J.R., et al. *Nucleic Acids Res.* 20:5587-5592(1992).  
Austin C.A., et al. *Biochim. Biophys. Acta* 1172:283-291(1993).  
Chung T.D., et al. *Proc. Natl. Acad. Sci. U.S.A.* 86:9431-9435(1989).  
Sng J.H., et al. *Biochim. Biophys. Acta* 1444:395-406(1999).  
Austin C.A., et al. *FEBS Lett.* 266:115-117(1990).

