

**Topoisomerase 2 alpha Antibody**  
**Purified Rabbit Polyclonal Antibody (Pab)**  
**Catalog # AP51577**

**Specification**

---

**Topoisomerase 2 alpha Antibody - Product Information**

Application	WB
Primary Accession	<a href="#">P11388</a>
Reactivity	Human
Host	Rabbit
Clonality	Polyclonal
Calculated MW	190 KDa
Antigen Region	21 - 80

**Topoisomerase 2 alpha Antibody - Additional Information**

**Gene ID** 7153

**Other Names**

DNA topoisomerase 2-alpha, DNA topoisomerase II, alpha isozyme, TOP2A, TOP2

**Target/Specificity**

KLH conjugated synthetic peptide derived from human Topoisomerase 2 alpha

**Dilution**

WB~~ 1:1000

**Format**

0.01M PBS, pH 7.2, 0.09% (W/V) Sodium azide, Glycerol 50%

**Storage**

Store at -20 °C. Stable for 12 months from date of receipt

**Topoisomerase 2 alpha Antibody - Protein Information**

**Name** TOP2A

**Synonyms** TOP2

**Function**

Key decatenating enzyme that alters DNA topology by binding to two double-stranded DNA molecules, generating a double-stranded break in one of the strands, passing the intact strand through the broken strand, and religating the broken strand (PubMed: [17567603](http://www.uniprot.org/citations/17567603), PubMed: [18790802](http://www.uniprot.org/citations/18790802), PubMed: [22013166](http://www.uniprot.org/citations/22013166), PubMed: [22323612](http://www.uniprot.org/citations/22323612)). May play a role in regulating the period length of BMAL1 transcriptional oscillation (By similarity).

### Cellular Location

Cytoplasm. Nucleus, nucleoplasm. Nucleus. Nucleus, nucleolus

### Tissue Location

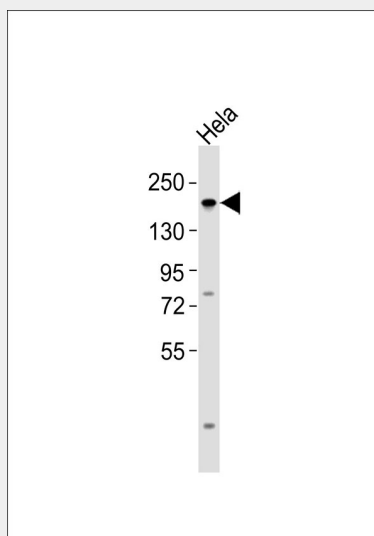
Expressed in the tonsil, spleen, lymph node, thymus, skin, pancreas, testis, colon, kidney, liver, brain and lung (PubMed:9155056). Also found in high-grade lymphomas, squamous cell lung tumors and seminomas (PubMed:9155056)

### Topoisomerase 2 alpha Antibody - Protocols

Provided below are standard protocols that you may find useful for product applications.

- [Western Blot](#)
- [Blocking Peptides](#)
- [Dot Blot](#)
- [Immunohistochemistry](#)
- [Immunofluorescence](#)
- [Immunoprecipitation](#)
- [Flow Cytometry](#)
- [Cell Culture](#)

### Topoisomerase 2 alpha Antibody - Images



Anti-Topoisomerase 2 alpha Antibody at 1:1000 dilution + HeLa whole cell lysates Lysates/proteins at 20 µg per lane. Secondary Goat Anti-Rabbit IgG, (H+L), Peroxidase conjugated at 1/10000 dilution Predicted band size : 174 kDa Blocking/Dilution buffer: 5% NFDM/TBST.

### Topoisomerase 2 alpha Antibody - Background

Control of topological states of DNA by transient breakage and subsequent rejoining of DNA strands. Topoisomerase II makes double-strand breaks. Essential during mitosis and meiosis for proper segregation of daughter chromosomes.

### Topoisomerase 2 alpha Antibody - References

Tsai-Pflugfelder M., et al. Proc. Natl. Acad. Sci. U.S.A. 85:7177-7181(1988).  
Wasserman R.A., et al. Cancer Res. 53:3591-3596(1993).

Lang A.J., et al. Gene 221:255-266(1998).  
Sng J.H., et al. Biochim. Biophys. Acta 1444:395-406(1999).  
Zody M.C., et al. Nature 440:1045-1049(2006).